



# GOING 'ROUND

Front Range Woodturners Newsletter

Vol. 24, No. 12 Decemberr 2024

Editor: Brenda Blaesing

## HOLIDAY PARTY

**Friday, December 13th**

Our holiday party will be held on Friday, December 13th at First Plymouth Church UCC, 3501 S Colorado Blvd, Cherry Hills Village, CO 80113. The social hour will start at 5:30, dinner at 6:30 and the program will run from 7:30 to 9:00. The club will provide turkey, ham, mashed potatoes and drinks. Members are encouraged to bring a side dish, salad or dessert. The main event of the evening will be an auction to raise funds for the Pete Holtus Educational Opportunity Grant program. Bring your generous spirits and your wallets. The RSVP deadline is Friday, 12/6. Use this web signup form: <https://www.signupgenius.com/go/30E054BA5A72CA5FF2-51937360-frwholiday>

If you have any problems, contact Bear: [bear@bearlimvere.com](mailto:bear@bearlimvere.com)

## ORNAMENT EXCHANGE

One of the traditions of the party is the Ornament Exchange. Bring your turned ornament and exchange it with a fellow ornament enthusiast. When you arrive at the party, you will get a raffle ticket and a tag for each ornament you bring. On the tag, you will put your name and material(s) of construction. The ornaments will be on display until the ornament exchange begins. Then they'll be placed in brown paper bags for a random drawing. As each number from the raffle tickets is called, the called ticket holder will pick a random bag. This will continue until all ornaments have been exchanged.

## CENTERPIECES

For those who signed up to create centerpieces, the club will provide tealight candles to incorporate into your piece. Tealight dimensions are:

Diameter: 1-7/16"

Height: 23/32" base only, 1-3/8" with light

## WHERE TO FIND US:

Website: [www.frontrangewoodturners.org](http://www.frontrangewoodturners.org)

Facebook: <https://tinyurl.com/yacakdwa>

Ladies of the Lathe: <https://tinyurl.com/yap8m6x4>

YouTube: <https://tinyurl.com/yxem4vw9>

## THIS MONTH'S NEWS:

Holiday Party .....	1
Club Information & Officers .....	2
Brown Bag Demo .....	2
Ladies of the Lathe .....	3
Shop Tours .....	3
Mentors.....	4
Group Buys .....	4
Torching Wood.....	5-6
Turning Challenge / Perpetual Turning .....	6
Photo Gallery .....	7-8



## CLUB INFORMATION

Front Range Woodturners is the Denver-area chapter of the AAW (American Association of Woodturners), serving woodturners throughout Colorado's Front Range. We help woodturners gain experience by providing monthly demonstrations with professional turners, mentoring, a ladies group (Ladies of the Lathe) and youth mentoring.

## MONTHLY MEETINGS

Everyone is welcome to check out one of our monthly meetings. Meetings are held on the first Tuesday of the month at Rockler Woodworking, 2553 S Colorado Blvd. #108 in Denver. Meetings start at 6:15pm.

## MEMBERSHIP DUES

Individual - \$45, Couple - \$50, Student - \$22.50.

FRW members consist of the following:

Co-Club Members	44	Lifetime Members	18
Family Members	33	Roster	30
Individual Members	132		

**Total Membership 258 paid for 2024**

## CLUB OFFICERS & BOARD MEMBERS

President: Don Prorak

Vice President/Program Director: Jessica Edwards

Secretary: Patrick Crumpton

Treasurer: Larry Abrams

President Emeritus: Robyn Herman

Club Historian: Rick Orr

Coffee Chair: Gary Starritt

Communications Chair: Pat Scott

Group Buy Coordinator: Jay Miller

Internet Chair: Pat Scott

Ladies of the Lathe Chair: Debra Higley-Feldman

Librarian: Brian Tooker

Membership Chair: Scott Schlapkohl

Mentoring Program Chair: Marty Christensen

Newsletter Editor: Brenda Blaesing

PHEOG Grant Chair: Marty Christensen

Photographer: Jim Record

Publicity Chair: Robyn Herman

Shop Tour Chair: Keith Motzner

Videographer: Larry Abrams

Wood Raffle: Lavonne Kaiser

Youth Chair: Don Prorak

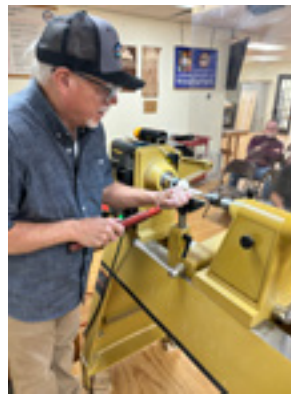
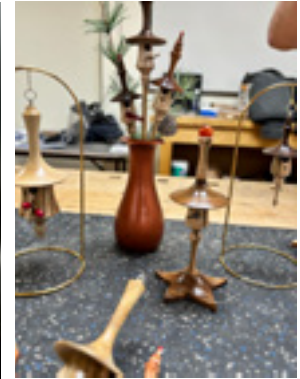
## BROWN BAG DEMO

Robyn Herman - [rrherm@gmail.com](mailto:rrherm@gmail.com)

For November's Brown Bag Demo, **Raleigh**

**Lockhart** gave a very inspiring presentation on using mandrels to turn birdhouses and gnomes. Raleigh makes a lot of birdhouses and has this technique down to a science.

This was our last BBD for the year. If there's something you'd like to learn in next year's demos, please contact Robyn.



## LADIES OF THE LATHE

Debra Higley-Feldman -  
debrakhf@gmail.com



In November, **Raleigh Lockhart** taught a two-day LOTL class on making Shaker boxes. We learned about the best wood types and that you can use a chafing dish to boil the laths. After shaping, the bands were secured with copper tacks and toothpicks/wood glue. The tops and bottoms were added on day two, then the boxes were painted (an optional step) and finished.



The next LOTL class will be on Jan 7th (10-4) at Rockler. **Jessica Edwards** will teach us how to turn jewelry using an elliptical chuck insert that we build. There is room for more people should you wish to join us.

**Jay Miller** will be giving a LOTL class in turning wooden eggs, including making an egg jam chuck. The class will be Feb. 11th from 10-4 at Rockler.

## SHOP TOURS

Keith Motzner -  
frw.shoptour@gmail.com



Shop tours are a great way for both old and new members to get better acquainted and to see how the other half turns, as well as seeing other members tools and equipment. You may even pick up some new ideas or techniques for your own shop. Contact [frw.shoptour@gmail.com](mailto:frw.shoptour@gmail.com) if you'd like to schedule a tour of your shop in 2025.

## MENTORS

Marty Christensen -  
mecturning@gmail.com



Some FRW members have volunteered to be one-on-one mentors to help other members. No matter what skill level you are, a few hours of personalized instruction may be all you need to master a new tool or technique. Check out who is available in your area. If you're interested in being a mentor, contact Marty.

LOCATION OF MENTOR	NAME/ CONTACT INFO	AREA OF EXPERTISE
Arvada	<b>Dennis Fanning</b> dcfanning@aol.com	General
Boulder	<b>Dave Hawley</b> Dbh001@gmail.com	Beginner/ General
Brighton	<b>Don Prorak</b> donprorak@comcast.net	Beginner/ Youth
Centennial	<b>Keith Motzner</b> kmotzner@me.com	Wood Gathering & Prep/ Sharpening/Tool Skills
Centennial	<b>Les Stern</b> sternsclass@hotmail.com	General
Denver SW	<b>Henry Williams</b> williamshenrya@gmail.com	Spindles/ Bowls
Denver- Rockler store	<b>Larry Abrams</b> laabrams.51@me.com	General
Highlands Ranch	<b>Rick Orr</b> rickorr.1848@yahoo.com	Boxes/Inlay/ Thread Cutting
Hudson	<b>Marty Christensen</b> mecturning@gmail.com	General
Lakewood	<b>Debra Higley</b> debrakhf@gmail.com	General
Littleton	<b>Jay Miller</b> jaymiller9637@comcast.net	General
Louisville	<b>Roger Holmes</b> roger_holmes@comcast.net	Beginner
Thornton	<b>Bob Franklin</b> Btheb66@gmail.com	General/ Stabilizing

## DECEMBER MENTORING CLASS

Marty Christensen - mecturning@gmail.com

The December mentoring class will be held on Monday, December 9th from 5:00 to 7:00pm at Rockler. The topic is to be determined.

## QUARTERLY GROUP BUYS



FRW places group buys once a quarter-in January, April, July and October-to get discounted pricing from the below manufacturers. The next group buy will be in January. Jay Miller is the group buy coordinator and Ted Mellin is his assistant. See the FRW website for more info, price lists and order forms.

**Industrial Abrasives** - send orders to Jay Miller

Industrial Abrasives is our principal vendor for sanding supplies. Prices for hook & loop mandrels and discs remain the lowest in the marketplace and their backing is a heavier weight than the competition.

**Starbond** - send orders to Jay Miller

Starbond is our CA glue supplier. Our minimum order is \$100, but we receive an additional discount at \$200, making shipping free. Sign up for Starbond's newsletter to be notified of sales that beat our wholesale prices.

**Craft Supplies** - send orders to Ted Mellin

Craft Supplies sells a very wide range of products. Our minimum group purchase is \$1000. Members may not place individual orders to get a discount.

**Spence Industrial Supply** - send orders to Ted Mellin

We will be purchasing band saw blades from Spence once a year, in April, unless a member can meet the minimum order in another quarter. All blades are carbon steel flexback in 1/4" (4 tpi), 3/8"(3 tpi), or 1/2" (4 tpi) width, hook tooth, and .025"thick. Our minimum buy is 20 blades for each width in any length.

Send orders and checks to:

Jay Miller  
9637 W. Vandeventor Dr  
Littleton, CO 80128  
303-945-4306

Ted Mellin  
9043 W Coco Dr  
Littleton, CO 80128

**Individual Catalog Orders**

Two additional companies, Klingspor and Penn State Industries, offer discounts to members who wish to place individual catalog orders. To take advantage of these discounts, you must be on their list of FRW members. To be placed on the list, please sign up at a meeting or send an e-mail to Jay Miller (jaymiller9637@comcast.net).

## BEFORE YOU TOSS IT, TORCH IT

Ryan Custer

Earlier in the year I had the honor of attending a Trent Bosch woodturning workshop as part of the FRWT Pete Holtus Educational Opportunity Grant. It was an amazing and educational experience that I would highly recommend to anyone who has the chance to attend.

Not only did we as a class get to learn from one of the greats in our craft with Trent, but his son-in-law, Laurent Niclot, also jumped in with demos, instruction, and coaching. We were even lucky enough to hear from the quiet and elusive Kailee Bosch, who popped in a couple of times as well.

The three-day workshop was packed with honing our skills, new techniques, and the opportunity to experiment with carving, textures and finishing techniques. I could take over the entire newsletter talking about all the techniques we learned, but I will keep it to one that I have found is rarely brought up.

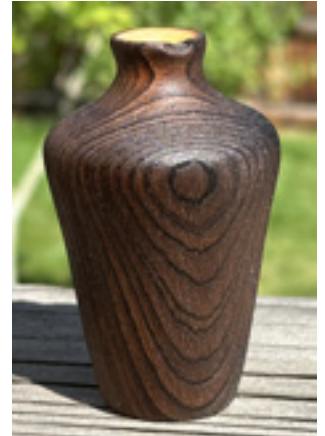
Laurent introduced us to texturing and finishing projects through burning them with a torch. I know this technique has been around for eons, but it was the first time I've had it explained and shown to me. At first, I thought 'Why would you want to burn your work?', until Laurent presented us with the final result. I was amazed. The burning and brushing technique chars the softer portions of the wood grain allowing a brass brush to pull it out, creating miniature hills and valleys for texture while adding depth of color.

Recently I turned a small hollow vase out of what I thought was going to be some nice beetle kill pine. When the project was done, I was greatly disappointed. It was so plain that it looked like I turned a 2x4 from the scrap pile. I was getting ready to toss it out when I remembered Laurent telling us that bland or boring pieces can be burned to create new texture, lines and colors. I gave it a shot and found new love in the final piece.

Laurent suggested using a small flambe torch that is used by cooks, but any steady flame source will work. I use a Benzomatic torch. It is important to use a source that provides a constant flame and tempera-

ture so you can accurately control what you do with the piece. When applying the flame to the wood, use the very tip of the flame where it is the hottest. Apply the flame to the workpiece just to the point where the wood begins to glow orange but try not to light it on fire. If it does catch fire, just blow out the flame and keep going. With a little practice, you can quickly master the technique.

Once the whole workpiece, or the areas you want treated, have been burned let it cool off a bit. Then take a brass brush and start scrubbing with the grain of the workpiece to pull the charred softer material out of the valleys. I've found that a few swipes across the grain can also add some additional texture if you are looking for a rougher appearance on your finished piece. The more you brush, the more material you will remove. By controlling the amount of char I make with the burning and the amount of scrubbing with the brush, I can vary the color from a black piece to a dark brown or even caramel brown color.



Finishing can be done in a couple of ways. Laurent recommends using a liberal amount walnut oil and allowing it to dry. I have found if you've removed the charred remains of the softer wood grain, when the oil cures, there will be no or minimal burn smell. I have also had success using two or three applications of spray lacquer to seal in any burn smells on pieces when I chose to leave some charred grain. I will say the lacquer method does leave the piece feeling a little like plastic though. Through experimentation, Laurent has discovered additional techniques, such as carving, painting, and adding small amounts of gilding wax to give the wood the appearance of metal or other materials.

Some cautions with burning though. Obviously, you want to do this technique in a safe manner, in an open area with plenty of ventilation and something close by to put out any accidental flames. I suggest wearing protective gloves and a mask when brushing the char, which creates a lot of fine dust. I've also learned the hard way that burning near the rim or thin portions of a workpiece, may cause it to burn fully away. Sometimes this is a nice surprise, and other times it can be a bit disappointing.

A few additional inspirational artists who texture with fire include Colorado's own Dave Landers who has a beautiful series titled "Troublesome" (<https://dlwoodturning.com/portfolio/troublesome-series/>) showcasing the beauty and possibilities of beetle killed pine that has been shaped and textured with fire. UK artists Barnaby Ash and Dru Plumb (Instagram: ashandplumb) create beautiful wood turned sculptures using various species of wood that are burned and textured. Of course, a wealth of additional artists and inspiration can be found in the AAW forums.

I hope that in the future, if you end up with a disappointing piece on your lathe, before you toss it you will torch it. You maybe pleasantly surprised with the final outcome.

## ROCKLER

Patronizing the Rockler store is the best thank you we can give Rockler for their generosity in letting us use their facilities for our meetings. They keep the register open late on meeting nights just for us, but be sure to complete any purchases no later than the mid-meeting break. All FRW members get 10% off all items, except electrical or sale items, all the time. Just present your FRW membership card at time of purchase. Note: This offer is good only at the Denver store and is not valid at other Rockler stores or for online purchases.

## TURNING CHALLENGE / PERPETUAL TURNING

Don Prorak

Our Turning Challenge for January will of course be a quaiche. (Cuz you can't have your quaiche and eat it too?) Please place your entries in the appropriate areas (Novice, Intermediate, Advanced/Experienced) to make it easier for everyone to vote. We will have a separate area for Gallery Only entries. Please print your entry forms from the web site so that we can read them! [https://www.frontrangewoodturners.org/?page\\_id=6431](https://www.frontrangewoodturners.org/?page_id=6431)

The Turning Challenge for November was Spinning Tops: Novice/Beginner - simple top; Intermediate - one captive ring; Advanced: two (or more?) captive rings. Winners:

Novice: Debra Higley-Feldman

Advanced: Don Prorak

Winners will receive a \$15 Rockler gift card at the next meeting.

Perpetual Turning: A beautiful vessel by **Matt Coupes** was awarded to **Michael Torres**, who will contribute a piece in January. Remember that the Perpetual Turning is not a competition; it is an opportunity to share our work. If you win the piece, the only expectation is that you replace it with something you are proud of and enjoyed making.

## AAW MEMBERSHIP

Front Range Woodturners is a chapter of the American Association of Woodturners. Club members may become individual members of AAW, if desired. Benefits include resources, weekly emails on various woodturning topics, and the quarterly American Woodturning magazine. See AAW's website at [www.woodturner.org](http://www.woodturner.org) for more information.

## PHOTO GALLERY

Here are some projects that members have been working on this month.



**Joe Clark** went back to making pens for the holidays. He turned these lighthouse pens for two family members who travel all across the country to photograph lighthouses. He selected hybrid acrylic and burl blanks to simulate a coastline on the pen body below the LED beacon that changes colors and flashes.

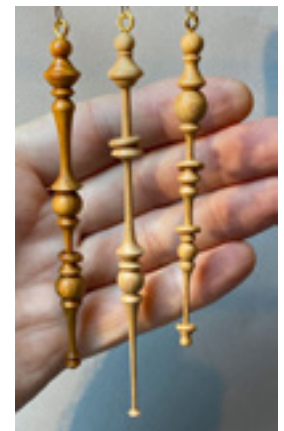


back to the house and fell. Broke his left arm. Not bad, but enough to stop the woodturning for a while. He dug into his stash of completed turnings to fill out his donations for the auction. The arm is mending nicely and 2-1/2 weeks after the fall, he was back in the shop to turn some magic wands. The magic wands are of various woods and are all the wood's natural color except the Red Oak wand with a custom blue pore filler. The one with a dark center band includes a magical core with over a dozen magical items inside. The longest wand is 13" long.



**Kim Komitor** completed this bowl that had been rough turned by Bruce Perry. Kim picked up at the club wood sale. It measures 12-3/4" by 7". Maple, beech, birch??

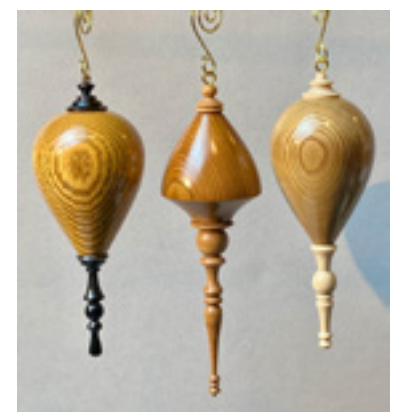
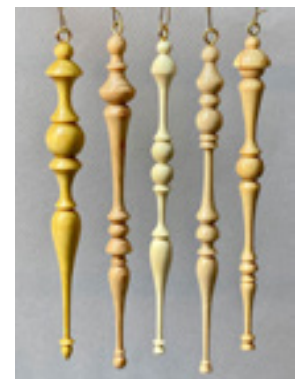
Curt wanted to remind everyone of the St. Jude Children's Hospital Charity Ornament Auction on eBay, <https://www.ebay.com/usr/turnerswarehouse>. The online live auction will start November 26th and end December 3rd with 100% of the proceeds going to the charity. eBay and PayPal will not take out any fees, so bid high and bid often! Curt also mentioned that if you see Rick Orr bidding on anything, you should out-bid him... just because. Curt's donated ornaments are a set of three hollow globe ornaments, a group of three delicate captured ring icicle ornaments, and a set of five icicle ornaments that are a little more suitable if you have pets with waggly tails.



**Jeremy Goldsmith** just made his first live-edge bowl. Made of apricot wood, it measures 5" in diameter by 3-1/4" high. He finished it with mineral oil.



Turning in November started out strong for **Curt Vogt** with Christmas tree ornaments for the St. Jude Children's Hospital charity auction on eBay. It is the sixth annual auction put on by the nice folks at Turner's Warehouse. He turned some icicle ornaments with captured rings but then hit a big snag in the process. After a great evening's turning, he was on his way



**Debra Higley-Feldman** made this cherry Shaker box tray in Raleigh's LOTL class; the finish is wood oil. Stamps for scale. The claro walnut/maple handle finish is wood oil; it screws into the Rockler pizza cutter. The 6" walnut/bigleaf maple/cherry lidded box is finished with Danish wood oil and carnauba.



Ken Rollins made two burl bowls. The bad news is that a neighbor's uncle died. The good news is that when cleaning out his garage they found these two burls and gifted them to Ken. Both bowls are about 6" x 3". He thinks one was an elm burl, but the white one was extremely lightweight, could be linden? It has subtle stripes and waves that don't show well in the photo, and he put a mesquite pedestal base on it for contrast. Both have Danish oil finish.



**Bill Leigher** made these ash bowls with dye and silver accent paste. The paste works especially well on open-grained wood.



Not generally a fan of working with pine, **Blaine Blaesing** decided to give this piece of wood a try. In the end, he was glad he did, producing this 14" tall vase.



## NEWSLETTER SUBMISSIONS

Brenda Blaesing - [b.frezeman@yahoo.com](mailto:b.frezeman@yahoo.com)

Articles and photos for the monthly newsletter are always welcome. Please email your submissions by the 25th of the month for inclusion in the next issue.