



FRONT RANGE WOODTURNERS

May 2015, Volume 15 - Number 5

Editor: Jim Proud

Inside this Issue

Upcoming Events	1
<i>Demonstration</i>	1
<i>Monthly Meetings</i>	1
<i>Turning Challenge</i>	1
Announcements	1
<i>Clean –up Crew</i>	1
News	1
Club Info	2
<i>Membership</i>	2
<i>Shop Tours</i>	2
<i>Group Purchases and</i>	
<i>Individual Catalog Orders</i>	2
<i>Librarian's Corner</i>	2
<i>Ladies of the Lathe</i>	3
<i>Chair: Alisa Limvere</i>	3
<i>Mentoring Program</i>	3
<i>Newsletter</i>	3
<i>PHEOG</i>	3
<i>Web Site</i>	3
<i>Wood Raffle</i>	3
<i>Youth Mentoring</i>	3
Instant Gallery	4
Miscellaneous	6
<i>AAW Membership</i>	6
<i>Featured Providers</i>	6
<i>Parking Courtesy</i>	6
<i>Turning Challenge Rules</i>	6
<i>Courtesy During Meetings</i>	7
<i>Problems Receiving Emailed</i>	
<i>Newsletter?</i>	7
<i>AAW Scam Warning</i>	7
Rockler	7
Classifieds	7
<i>General Meeting Information.</i>	7

Upcoming Events

Demonstration

Chair: Ron Ainge

Our demonstrator at the May 5th meeting will be Guilio Marcolongo from Australia.

He will be hosting a full-day class at Rockler Wednesday, May 6th. If interested contact Tom Wirsing tom@thomaswirsing.com. Maximum of six students, cost \$100 per student.

For examples of Guilio's work, search his name on any search engine. Some pretty nice stuff!

Monthly Meetings

Monthly meeting times: Social Hour is 5:30-6:15. Club Business, Gallery, and Wood Raffle begins at 6:15. The evening's demonstration follows the break.

Executive Committee (Officers and Chairs) Meeting – To be announced. Members are always welcome to attend.

Turning Challenge

The Perpetual Turning Winner for April was Nic Ansuini who took home the box turned by Rick Orr.

May Turning Challenge - Pens

Everyone is encouraged to bring in a turned piece to share in the Instant Gallery, regardless of the turning challenge for that month.

April Turning Challenge Winners:
Salt/Pepper Mills

Beginner: none

Intermediate: Paul Russell –
Lighthouse Pepper Mill (wenge,
maple)

Advanced: Pat Scott – Norway Maple
Pepper Mill

Important Note: Even though a turning challenge is announced for a

meeting, this does not mean that other items can't be brought for the show & tell. Feel free to bring in what you've created and don't feel you have to be a master turner to show off your work. Everyone has start as a novice.

Announcements

Clean–up Crew

Many thanks to **Dana Seymour**, and **Bob Carver** for cleaning up after the April meeting. May 5, 2015 Clean Up Crew Volunteers are Howard Longee, John Chart, and Dutch Van Maaren

News

The **36th Utah Woodturning Symposium** is scheduled for May 14 - 16, 2015. The *Utah Woodturning Symposium* will host it's first **Women in Turning** gathering. Women in Turning is a virtual chapter of the American Association of Woodturners. We had our start at the 2014 AAW Symposium in Phoenix, AZ when Betty Scarpino organized a meeting of women to see if there was interest in forming a group focused on the support of women woodturners.

Check the website for additional details. utahwoodturning.com

Submitted this month by **Richard Kuivila** - take a look at these pictures of trees from around the world:
<http://www.duskyswondersite.com/tag/amazing-trees>

FRONT RANGE WOODTURNERS

Club Info

Membership

Chair: Alisa Limvere

Annual dues are the following:

- Individual – \$45
- Couple – \$50
- Student – \$22.50
- Under 12 years – Free!

To help with tracking payments, we request that you pay using a personal check or money order made out to Front Range Woodturners. You can pay in cash if you have exact amounts. You can also mail a check or money order (no cash, please) for your dues to the following address:

Front Range WoodTurners
P.O. Box 714
Franktown, CO 80116

Please include the following information with your dues: Name; Spouse Name (if signing on as Couple); Street; City; State; Zip; Home Telephone; Work Telephone; Email; Website.

You will receive multiple benefits of being a member, including but not limited to the following:

- Monthly newsletter
- Ability to check items out of our extensive library
- Discounts in regular bulk orders of various supplies
- Discounts at stores in the Denver area (including the 10% discount at our Rockler store!)
- Monthly demonstrations by locally and internationally known Woodturners
- Being listed in and receiving a copy of the membership roster
- Ability to participate in free, hands-on mentoring classes
- And last, but not least, access to the best bunch of woodturners around for

questions, war stories, or just to visit.

All our club events are funded by your dues and donations.

If you are a member in good standing with the Rocky Mountain Woodturners you can join Front Range Woodturners club for half price. Likewise if you are a member in good standing here you may join the RMW club for half price.

Shop Tours

Chair: Doug Stearns

June Shop Tour

Gene Wentworth on June 13th from 1pm to 3pm (Details in next newsletter).

July Shop Tour

Suzanne Thompson on July 18 from 2pm to 4pm

August Shop Tour

Denise Newman (date and time to be announced)

Group Purchases and Individual Catalog Orders

Chair: Roger Holmes

Please see the FRW website for the Group Purchases and Individual Catalog Orders details. Copies are also available at the Group Purchase table before meetings. Please make checks payable to Roger Holmes for Craft Supplies and Woodcarvers Supply group purchases. Make checks for CA Glue and Sanding Disks payable to Del Fussell. To participate in Individual Catalog Orders, sign up on the sheet that is passed around at each meeting.

Quarterly Group Buy Schedule:

Group purchase orders for Industrial Abrasives, Starbond CA Glue, Craft Supplies and Woodcarvers Supply will be taken at the monthly meetings in January, April, July and October.

Group Buy Contact Information:

Roger Holmes – 1844 W. Plum Cir., Louisville, CO 80027 - 303-665-8041 - roger_holmes@comcast.net

Del Fussell – 11455 N. Antelope Ln., Parker, CO 80138 - 303-805-2663 - fussell6@comcast.net

Ted Mellin – 9043 W Coco Drive, Littleton, CO 80128 – 303-973-8216 - woodturnerted@gmail.com

Note: If Rockler stocks an item, please purchase that item from Rockler at their 10% club discount. We owe that to Rockler for being a wonderful host to our club.

Be sure to check with Roger Holmes and Del Fussell if you have made any group buy orders.

Librarian's Corner

Librarian: Bob Britt

"Dang! This video won't play, seems to be locked." Sound familiar?

Videos today are produced in several formats. This is especially common when they originate outside North America. Not all of them are compatible with your DVD player/TV combination. This can be somewhat frustrating because in most instances the format is not indicated on the disc, the packaging or documentation and a format option is not always available when the order is submitted.

SO; if a disc does not begin to play and appears to "lock" right from the beginning try viewing it on a computer before returning it to the library as a "bad disc".....to be continued....

Recent library additions–

HAR-04A – Sea Urchin Ornaments – Ashley Harwood - DVD

KAC-01 – Peppermill School – Fred Kachelhoffer - DVD

LIM-10 - Turning Drinking Vessels - Bear Limvere – FRW Demo

LOD-05 – Methods for Piercing – Andy Lodge – DVD

LUC-04 – Sharpening Techniques- Glenn Lucas – DVD

FRONT RANGE WOODTURNERS

MAH-09 –Woodturning Basics 5 Projects – Mike Mahoney -DVD

MUE-01 – Making Rings (for your finger) – Dave Mueller - DVD

PER-06 – Prep and Turn a Peppermill – Bruce Perry – FRW Demo

SHE-10 - Casting and Turning Pen blanks – Dale Sherman-FRW Demo

Woodturning Magazine -Issues: WT278, WT277, WT276, WT275, WT274, and WT 273

When you are a turner things are "bound to come around."

Ladies of the Lathe

Chair: Alisa Limvere

All female members of the FRW, aged 12 or older, are invited to join the Ladies of the Lathe. Turning is a finesse skill that anyone can learn. LOTL is intended to provide a comfortable, easy-paced, and non-threatening environment for women to learn and advance their skills in turning.

Classes are scheduled for the 3rd Saturday of every month in the basement of Rockler Woodworking. These classes are provided to expand the knowledge and skills for female woodturners, from complete novices to intermediate to eventually advanced skills. The classes will be structured with the first 2-3 hrs introducing a skill, technique, or basic knowledge, with the rest of the day practicing that skill with a project. Please feel free to submit requests or ideas for classes. Below are the proposed class schedules for the next few months, but they may be subject to change based on submitted requests/suggestions:

May – No meeting

June – To be announced

Space will be limited to a maximum of 5-7 attendees, so please be sure to reserve a spot. Materials and equipment will be provided.

Turning is a finesse skill, so massive muscles are not required. We need

more lady turners to make shavings. Why should the guys have all the fun?

Mentoring Program

Chair: Marty Christensen

The mentoring program is well under way. At the first meeting there were 6 people that attended. The second meeting there were only 3. Kind of disappointing. We covered sharpening and different types of sharpening systems. Those that couldn't attend missed out. We will be continuing with the book. We will be meeting the first Monday after the club's meeting. We meet in the basement of Rockler from 5 to 7pm.

Newsletter

Editor: Jim Proud

Comments and articles for the monthly newsletter should be emailed to the editor at cavaleon1956@gmail.com. Please put FRW Newsletter in the subject line. Submissions must arrive by the 2nd Tuesday before the next meeting which will help get the newsletter out in a timely manner. For the May issue, the deadline is April 21.

PHEOG

Suzanne Thompson
PHEOG Chair

Thanks to the great participation in the raffle the PHEOG will have a healthy budget for awarding grants for 2016. Be planning now to submit your proposals. Jot down ideas now and through the summer for a grant proposal. Let's don't let this money sit in the FRW bank account.

Don Rogers, Ron Ainge, and Larry Abrams were the winners of the two dust collectors and the RMWT Symposium registration. Many thanks to everyone who made donations to this special raffle, and to all those that bought tickets. **We raised \$1225 for the PHEOG fund for next year!**

Web Site

Chair: Doug Hill - All the info you need on upcoming Club events and more.

Please take the time to fill out the polls under "We'd like to know". Visit the Discussion Board and talk to your fellow Woodturners.

www.fronrangewoodturners.org

Wood Raffle

Chair: Lavonne Kaiser

Bring in a piece or two of wood you would like to donate to the club for the wood raffle each month and you will receive one free ticket. Tickets sell for \$1 apiece. The money supports the overall activities of the club.

Perpetual Turning Project

The concept is that the item brought for the Perpetual Turning Project is the first item in the next month's raffle. The member who wins the turning must bring another turning to the next month's meeting. It's an excellent chance for members to gain pieces made by other members. The turning can be as plain or fancy as you want. Beginners can participate just as much as advanced turners. If the member doesn't want to make a turning, he/she can choose just the wood, and the next winner can take the turning.

Youth Mentoring

Chair: Doug Hill

Upcoming dates are May 9th and June 13th.

For more information please contact our Youth Mentor Chairperson.

Doug Hill at YouthChair@fronrangewoodturners.org

FRONT RANGE WOODTURNERS

Instant Gallery

Photos from the April meeting.



Bruce Perry – Cherry



Dave Hawley – Bamboo



Dave Hawley – Bordeaux Wine Vine from France



David Hagen



David Hagen – Willow, Acrylic



David Hagen – Aspen, Green Dye



David Hagen – Willow, Acrylic Paint



Don Rogers – Cedar



Don Stang – Walnut, Maple, Russian Olive, Purpleheart

FRONT RANGE WOODTURNERS



Kim Komitor – Walnut



Paul Russell – Wenge, Maple



Richard Larghe
Left: Maple



Marty Christensen – Cherry,
Purpleheart



Mike Skiba – Aspen



Roper – Walnut



Roper – Sycamore, Transtint Dye,
Gold Leaf



Richard Larghe – Maple



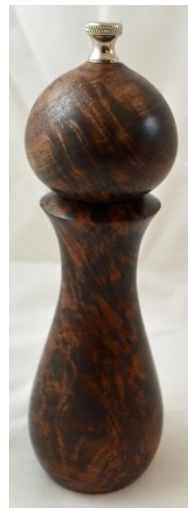
Roper – Sandos Mahogany



Pat Scott – Big Leaf Maple Burl



Pat Scott – Norway Maple



Pat Scott - Walnut

Miscellaneous

AAW Membership

The American Association of Woodturners (AAW) is our “mother” organization. FRW is a chapter of AAW. AAW has a separate membership fee and program from FRW with multiple benefits, not least of which is their quarterly American Woodturning magazine. See AAW’s website at www.woodturner.org.

Featured Providers

Rocklers provides a 10% discount for many items for club members. Rockler keeps the cash register open until the end of the meeting break. Try to do your shopping before the end of the break, so that they can get out quickly after the end of the meeting.

Parking Courtesy

Rockler has requested that we do not park in front of the neighboring open businesses as a courtesy. Please leave room for their customers. If the lot in front of Rockler is full, there is ample additional parking across Colorado Blvd.

Turning Challenge Rules

Here are the rules for the Turning Challenge.

Category – Typically, each month’s challenge is the topic from the previous month’s demonstration, unless otherwise indicated in the newsletter.

Competing – Please fill out a Show and Tell form for your competition piece and be sure to mark whether you think you are a Beginner, Intermediate, or Advanced turner.

Voting – Please vote once for each experience class. Votes are tallied after the break and the winners announced.

You don’t have to compete in the Turning Challenge, but it can be fun. Remember that you can bring other

FRONT RANGE WOODTURNERS

types of turnings for the Show and Tell, too.

Courtesy During Meetings

We have been requested to please stay seated and quiet during the meeting and demonstration as a courtesy to our demonstrators and fellow members. If you feel the need for conversation during the meeting or demonstration, please feel free to step out into the Rockler store.

Also, please return promptly after the break to make sure we don't lose time for our demonstrator.

Problems Receiving Emailed Newsletter?

Unfortunately, many email providers are automatically filtering attachments or entire emails because of the proliferation of viruses and spam. If you have signed up for an emailed newsletter, but haven't been receiving it lately, try the following:

- Confirm that your email inbox isn't full. Many email providers will automatically deny emails without telling you if you've used up your space allotment.
- Check with your email provider to see if they are filtering your email without you knowing.
- If your email provider allows you, add the following email addresses to your "Always Allow" or "Do Not Filter" list: You should receive the newsletter from this email address Cavaleon1956@gmail.com
- Confirm with Jim (newsletter editor) or Alisa (membership chairman) that your e-mail address is correct.

AAW Scam Warning

The following was received from AAW:

In the past, one or more people have received telephone calls to join the AAW or to subscribe to the AW Journal (magazine). Here are the facts:

The AAW does not do any telemarketing or phone soliciting for membership or magazine subscriptions.

The AAW does not endorse any agents to solicit AAW membership or magazine subscriptions.

Any such telephone call you receive to this effect is a form of "phishing," where an unscrupulous person is trying to get your credit card or other personal information for their illegal usage. You should not give out your credit card number or personal information as a general policy unless you initiate the phone call to a known business.

Rockler

Patronizing their store is the best "thank you" we can give Rockler for their generosity in letting us use their facilities for our ever-growing membership. Keep in mind that they keep the register open late on meeting nights just for us. Just be sure to complete any purchases no later than the mid-meeting break so these poor guys can start shutting down and go home.

As always – all FRW members get 10% off all items, except electrical or sale items, all the time. Just present your FRW membership card at time of purchase. (Note: This offer is only good at the Denver retail location, and is not valid for any other location or for Internet purchases.)

If you have suggestions for tools or materials that Rockler can carry,

contact Rich Johnson, manager of the Denver store. Rockler web site: www.rockler.com.

Classifieds

Please note: All advertising in the Classifieds is free, but be sure to notify the newsletter editor if an item is no longer for sale.

Ad Policy – All ads that are older than 3 months will be deleted, unless you contact the newsletter editor.

To submit a classified ad please email to: jlproud@yahoo.com. In the subject line put: FRW Classified Ad

FOR SALE: Six heavy table tops, 2'x4', "walnut" Formica on a 1" composite base, and one set of adjustable legs. These are perfect for workshop applications like small to middle lathe and tabletop tool bases, assembly and outfeed tables, large cabinet bases, mobile demo stations and anywhere a small footprint, big utility table is handy. Built to take a real pounding. \$25 per table, leg set \$20.

Chuck Kubin, 303-733-0254

General Meeting Information

Normal meetings are the first Tuesday of every month, unless otherwise rescheduled. Social Hour is 5:30-6:15, Club Business, Gallery, and Wood Raffle begins at 6:15.

Our meeting place is at Rockler Woodworking & Hardware, 2553 So. Colorado Blvd. #108, Denver (west side of Colorado Blvd. opposite the mall).