



FRONT RANGE WOODTURNERS

December, 2009, Volume 9 - Number 12

Inside this Issue

Upcoming Events.....	1
News.....	1
December Holiday Party!.....	1
FRW Election.....	1
Group Purchases and Individual Catalog Orders	1
Club Library.....	1
Featured Providers	2
Show and Tell.....	2
Demonstration.....	3
Rockler	4
Web Stuff.....	4
Classifieds.....	5
Club Information	5
General Meeting Information .	5

Upcoming Events

Important Note: Even though a turning challenge is announced for a meeting, this does not mean that other items can't be brought for the show & tell. Feel free to bring in what you've created and don't feel you have to be a master turner to show off your work. Everyone has start as a novice.

December – Friday, December 11th.
FRW Holiday Party. No turning challenge.

November turning challenge winners are:

Beginner – Zac Howd

Advanced – Mike Marek

News

December Holiday Party!

Boy, this year has zoomed by! We are coming up on the annual FRW Holiday Party held on Friday, December 11th, starting at 6:30

pm, at the same location as last year, the First Plymouth Congregational Church, 3501 S. Colorado Blvd. It is located at the southwest corner of the intersection at Hampden and Colorado, approximately 10 blocks south of Rockler. Use the south door and parking lot. Again, many thanks to Earl and Carol Weibel for getting this for us.

Dinner and soft drinks will be provided. Feel free to bring side dishes, appetizers, and/or desserts. (Desserts, yes!)

Also, we will be having an auction of donated items with all proceeds going to FRW. Feel free to bring items to donate and/or your checkbook to buy.

Contact Bear or Alisa at 303-648-3414 if you want to volunteer before, during, and after the dinner in cooking, serving, and most importantly, clean up.

FRW Election

We have tallied the ballots and will be announcing the results at the December Holiday Party. Thank you to all who voted.

Group Purchases and Individual Catalog Orders

Please see the FRW website for the Group Purchases and Individual Catalog Orders rules. Copies are also available at the Group Purchase table before meetings. Please make checks payable to Roger Holmes for Craft Supplies and Woodcarvers Supply group purchases. Make checks for CA Glue and Sanding Disks payable to Del Fussell. To participate in Individual

Catalog Orders sign up on the sheets that are passed around at each meeting.

Group Buy Schedule:

Group purchase orders will be taken at the monthly meetings in **January, April, July and October.**

Group Buy Coordinator Contact Information:

Roger Holmes – 1844 W. Plum Cir.,
Louisville, CO 80027 - 303-665-8041 -
roger_holmes@comcast.net

Del Fussell – 11455 N. Antelope Ln.,
Parker, CO 80138 - 303-805-2663 -
fussell6@comcast.net

Note: If Rockler stocks an item, please purchase that item from Rockler at their 10% club discount. We owe that to Rockler for being a wonderful host to our club.

Club Library

Thanks for your support this year. On behalf of Bob Britt, Grover Brown, Michael Busse, Richard Kuivila, Denise Newman, Bob Olson – your hard-working Assistant Librarians – I can share that we all enjoyed serving your needs this year, and we look forward to 2010!

I conducted an inventory several weeks ago, and the results were very favorable. We are still missing, from 2008, one book and one *Woodturning* magazine issue, and from 2009, one Demo DVD, one Demo VHS, and two *Woodturning* magazines issues, so we're doing well in preserving the Chapter's resources! And...those items still might show up!

Happy Holidays!

Regards, Dave Hawley, FRW Librarian

FRONT RANGE WOODTURNERS

Featured Providers

Rocklers, Colorado Blvd, Denver, provides a 10% discount for club members – see the Rockler section on page 5. Rockler will be keeping the cash register open until the end of the meeting break. Try to do your shopping before the end of the break, so that they can get out quickly after the end of the meeting.

Wood Emporium, Loveland, provides a 10% discount for FRW members.

Craft Supplies offers monthly deals with special discount codes that expire monthly. Discounts and codes will be posted on the FRW website. ❖

Show and Tell

The turning challenge for the November was Christmas Ornaments.



Ron Ainge – Christmas Ornaments.



Zac Howd – Christmas Ornament in aspen and walnut. Beginner Challenge Winner!



Mike Mareck – Christmas Ornament in rosewood. Advanced Challenge Winner!



Pete Holtus – Christmas Ornament in beech and walnut.



Jerry Smith – Christmas Ornaments.



Gruelt Baker – Christmas Ornaments out of sea urchin shells.



Bruce Perry – Vase in Siberian Elm.

FRONT RANGE WOODTURNERS



Bruce Perry – Bowl in Russian Olive.



Bruce Perry - Bowl in Curly Maple.



Dave Yeoman – Vase in Cherry & Turquoise.



Gordon Butler – Bowl in Sun Bleached Navel Orange.



Gruelt Baker – Bowl in Beetle Kill Pine.



Gene Wentworth – Bowl in Honey Locust (obverse)



Gene Wentworth – Bowl (reverse)



Gene Wentworth – Bowl in Walnut (obverse)



Gene Wentworth – Bowl (reverse)



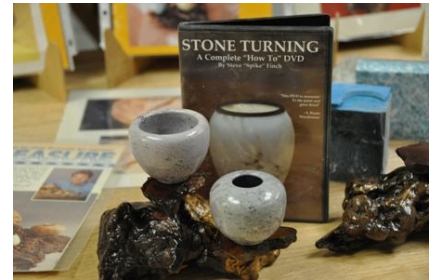
Bill Adams – Steady rest. Plans are available on the website, on the how to page. ❖

Demonstration

Lee Carter demonstrated his techniques and tools for turning talc and alabaster. He began his demonstration with a quick how to on making his Manzanita burl stand like the one below.



Lee's Manzanita burl stand.



For more information Lee recommends this video on stone turning by Steve Finch.

FRONT RANGE WOODTURNERS



Lee has been featured in many publications including this article on turning talc and alabaster.



Lee Cart begins his demo on making Manzanita burl stands.



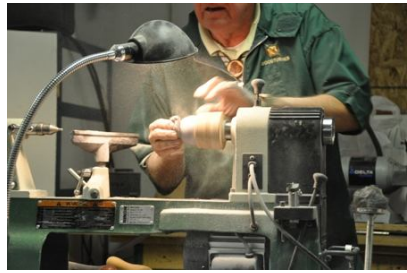
Lee shows the 3 step he makes to build his own waste block.



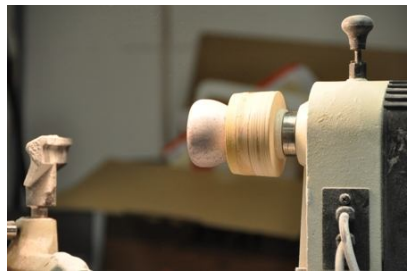
Lee starts by gluing a piece of talc to a waste block.



Lee refines the shape and hollows the bowl.



The stone is then polished on the lathe.



The top of the bowl is finished. Next Lee reverses the bowl on a waste block that he turned for centering, and then uses hot glue to secure the piece.

Burl Resource:

ExoticManzanita.com

Training Resource:

Rocky Mountain School of Woodturning, 4625 Kiva Drive, LaPorte, CO 80535

Synthetic Stone Resources:

Natural Expressions Inc., 13802 E. Williams Field Rd., Gilbert, Arizona 85295, 480-963-6552 ask for Fred.
El Paso Rock Shop, Inc., www.theelpasorockshop.com, 915-857-2477

Rockler

Patronizing their store is the best "thank you" we can give Rockler for their generosity in letting us use their facilities for our ever-growing membership. Keep in mind that they keep the register open late on meeting nights just for us. Just be sure to complete any purchases no later than the mid-meeting break so these poor guys can start shutting down and go home.

As always – all FRW members get 10% off all items, except electrical or sale items, all the time. Just present your FRW membership card at time of purchase. (Note: This offer is only good at the Denver retail location, and is not valid for any other location or for Internet purchases.)

If you have suggestions for tools or materials that Rockler can carry, contact Rich Johnson, manager of the Denver store. Rockler web site:

www.rockler.com.

Web Stuff

The Front Range WoodTurners Web site address:

www.frontrangewoodturners.org

You can contact our webmaster, Jason Springfield, at jason_springfield@yahoo.com for suggestions about content.

Get the latest information about upcoming events, meetings, and view the excellent photos of the show and tell gallery.

Other sites of interest:

(Rky Mtn Woodturners, Ft Collins)
www.verinet.com/~drmelli/rmw.html
www.lathes.co.uk
www.woodworkingbasics.com
www.treelineusa.com
www.woodturnerscatalog.com
www.kestrelcreek.com

FRONT RANGE WOODTURNERS

www.choicewoods.com
www.woodturner.com
www.woodturningonline.com
www.kazistudio.com ❖

Classifieds

Please note: All advertising in the Classifieds is free, but please be sure to notify the newsletter editor if an item is no longer for sale.

Ad Policy – All ads that are older than 3 months will be deleted, unless you contact the newsletter editor.

For Sale - Shopsmith Mark V which is a table saw, Disc Sander, Lathe, Horizontal Drill and Drill Press in one machine.

- Shopsmith 11" Bandsaw with Power Stand Kit.
- Shopsmith 6" Belt Sander
- Shopsmith 4" Jointer
- Shopsmith 18" Jigsaw
- Shopsmith 12" Planer Pro Model with Power Stand Kit
- DeWalt 10" Radial Arm Saw

Consumables such as extra saw blades, sandpaper, lathe tools, clamps, etc.

Original Owners Manual for each tool, complete set of Shopsmith woodworking courses and instruction manuals.

It would cost \$6500 to \$7000 to replace these power tools at current prices. Sale price \$2800 OBO
This is an opportunity for someone to get into wood working at a rock bottom price.

These tools are in excellent condition and have been well cared for. They

have had a good home but they now need a new and larger home!

John Montague for (Bill Sarber) 303-794-1679

For Sale –10" contractor table saw. Has router table built in on left side and extended right side wing. Contact Grover Brown at 303-985-2608 for more information.

Club Information

President/Videographer:
Andy Zartman

phone: 303-859-0724
e-mail: AWZartman@gmail.com

Vice-President/Program Director:
Ron Ainge
phone: 720-747-4852
e-mail: clu1.2@q.com

Treasurer: Warren Glover
phone: 303-364-1729
e-mail: gloverwl@comcast.net

Secretary/Newsletter

Editor/Webmaster:
Jason Springfield
phone: 720-283-4000
e-mail: jason_springfield@yahoo.com

Deadline for submitting material for inclusion in the newsletter is 15 days before the next meeting.

Membership Chair
Alisa Limvere
phone: 303-648-3414
e-mail: alisalimvere@yahoo.com

Publicity/Shop Tour Chair:
Marty Christensen
phone: 303-252-7776
e-mail: mecstoys@msn.com

Librarian: Dave Hawley
phone: 303-443-2332
e-mail: dave_hawley@comcast.net

Raffle-Wood Director: Curt Vogt
phone: 303-627-2957

Group Buy Coordinators: Roger Holmes
phone: 303-665-8041
e-mail: roger_holmes@comcast.net

Mentoring Program Chair:
Bruce Perry
e-mail: sandblperry@msn.com

Members, call Bruce for suggestions on how to solve turning problems. I am around most times, and will return calls a.s.a.p. if you leave a message at 303-972-4716

Coffee Coordinator: Randy Weems
phone: 303-797-3215

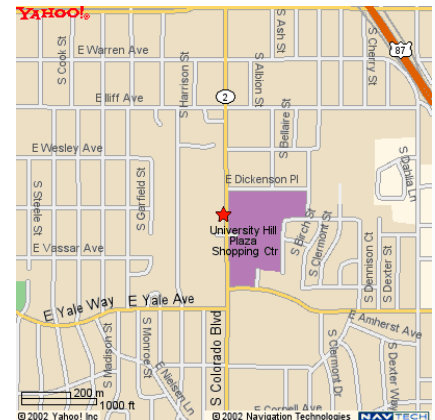
e-mail: rweems2032@aol.com

General Meeting Information

Normal meetings are the first Tuesday of every month, unless otherwise rescheduled.

Meeting place is at Rockler Woodworking & Hardware, 2553 So. Colorado Blvd. #108 Denver, CO (west side of Colorado Blvd. opposite the mall).

Meetings are 6:30 PM – 9:00 PM.





FRONT RANGE WOODTURNERS

December, 2009, Volume 9 - Number 12

Front Range WoodTurners
P.O. Box 3696
Littleton, CO 80161
