



FRONT RANGE WOODTURNERS

March, 2008, Volume 8 - Number 03

Inside this Issue

Upcoming Events	1
News	1
Annual Smock Order	1
FRW Board Meeting	1
Rocky Mountain Turning Symposium.....	1
Club Library	1
Ongoing Content.....	2
Upcoming Symposiums	2
Featured Providers	2
Show and Tell	2
Demonstrations	4
Rockler	6
Web Stuff	6
Classifieds	6
Club Information	6
General Meeting Information .	7

Upcoming Events

Important Note: Even though a turning challenge is announced for a meeting, this does not mean that other items can't be brought for the show & tell. Feel free to bring in what you've created and don't feel you have to be a master turner to show off your work. Everyone has start as a novice.

March – Tuesday, March 4. Bear Limvere will be demonstrating turning platters from 1" stock. Turning Challenge: Winged hollow forms ala Bruce Perry. ❖

News

Annual Smock Order

David Moncada will be taking orders for custom smocks at the March meeting. They will be embroidered with the FRW logo and your name. A full range of sizes are available in navy blue with a full-length zipper in the

front. At only \$35, you can't beat this price! Cash or a check made payable to "Front Range Woodturners" will be required at the time of the order. If you cannot attend the March meeting, call David at 303-794-7377.

The order will be placed with the vendor on March 13th, so be sure to get your order in to him before then. Be sure to specify your size and name. Delivery is anticipated for the April meeting.

FRW Board Meeting

The next Board meeting is scheduled for March 1, 2008, 9:15 am, downstairs at Rockler. We will be discussing the budget, bylaws, and general club business. Feel free to attend and present any ideas or suggestions.

Rocky Mountain Turning Symposium

The RMW Symposium has suggested giving a demo room to each local chapter. Correction: The idea is that each chapter can then help with the technical support for the demos in the room (running cameras, cleaning up, etc.). This will assist RMW in putting on the symposium, which is the only woodturning symposium being held in Colorado. If you are interested, contact Andy at the February meeting.

Club Library

See the website or the *Club Info* binder for the library rules. Following is a letter from our librarian, Dave Hawley:

More DVD versions of FRW Demo VHS tapes are available this month along with a slew of contributed items. Contributors' names are noted on the updated on-line FRW Library Resource List and affixed to the items – to give credit where credit is due. Please continue to log on to the FRW website about one week before each meeting to view, and download as desired, an updated PDF of the Library Resource List to enable creation of your "wish-list" for sign-outs. Remember we have a "Wait List" (see FRW Library rules) as well.

The Library Committee could still use some backup help for busy sign-out times. If you would like to help, please contact Dave Hawley.

Unfortunately, and perhaps due to the caucuses that conflicted with the January meeting, we now have ten (10) FRW Library Rogues, with one of those a Double Rogue (multiple sign-outs before timely return of items). Names are on-line and will be posted during meetings. Please be considerate of other members and use the drop box in the side of the Library cabinet at Rockler before the meeting at which items are due - then others can sign out these items at that meeting.

I am sad to report that not one of the 21 missing items cited in the January Newsletter has been recovered. These missing items are included in the FRW Library Resource List. Please continue to go through your "stuff" in case any of those items might be "hiding." Replacement cost for these items is about \$300 (for the ones that can be replaced), and that's too much to lose.

FRONT RANGE WOODTURNERS

Please continue to provide feedback on FRW Library operations and your desires for Library item content.

Regards,
Dave Hawley
FRW Librarian

Ongoing Content

To streamline the newsletter, we've moved the content that was in the middle of the newsletter, but never changed. Please go to the website at www.frontrangewoodturning.org or ask the librarian, Dave Hawley, for the Club Info binder at the next meeting. We'll keep updating it with reference information as we receive it, such as the group buy requirements, library rules, etc.

Upcoming Symposiums

Utah Woodturning Symposium

May 22-24, 2008. Utah Valley State College in Orem, UT. Check out their website at http://www.utahwoodturning.com/site/page/pg1205-pn_Home.html.

AAW Symposium

June 20-22, 2008. Greater Richmond Center, VA. Check out their website at <http://www.woodturner.org/sym/sym2008/>.

Featured Providers

Rocklers, Colorado Blvd, Denver, provides a 10% discount for club members – see the Rockler section on page 6. Rockler will be keeping the cash register open until the end of the meeting break. Try to do your shopping before the end of the break, so that they can get out quickly after the end of the meeting.

Wood Emporium, Loveland, provides a 10% discount for FRW members.

Craft Supplies offers monthly deals with special discount codes that expire

monthly. Discounts and codes will be posted on the FRW website. ❖

Show and Tell

The turning challenge for the February meeting was stacked-ring bowls.



Gene Wentworth – Bowl of silver maple.



Gene Wentworth – Lidded form of honey locust, ash, cocobolo, and silver (with pretty bottom).



Gene Wentworth – Natural-edged bowl with stand of persimmon and rosewood.



Gene Wentworth – Large platter of walnut with carved rim.



Gene Wentworth – Square-edged bowl with stand of colored wood and rosewood.



Steve DeJong – Bowl of walnut.



Gene Wentworth – Natural edged bowl with carved detail of apple, ebony and silver (with pretty bottom).

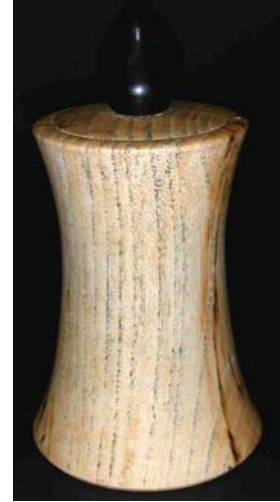
FRONT RANGE WOODTURNERS



Bruce Perry – Winged hollow form of elm. Donated to the Channel 6 Auction. Thanks, Bruce!



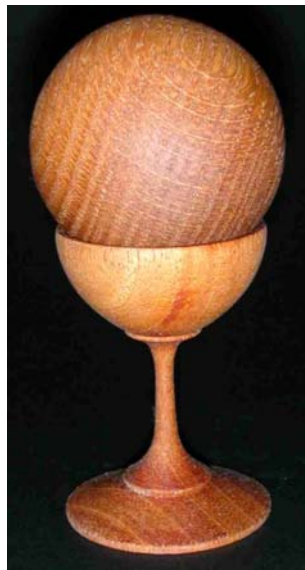
Pete Holtus – Tri-sided box of maple.



Ray Richards – Another toothpick holder of ash and ebony.



Pete Holtus – Lidded box of maple with inlaid amboyna.



Pete Holtus – Hollow ball with rattle on stand of oak. (Find the seam!)



Ray Richards – Egg cups of scrub oak.



Gene Wentworth – Platter with carved rim of maple burl.



Ray Richards – Toothpick holder of locust. Uses pattern in the Feb issue of Wood Magazine.



Steve Claycomb – Bowl of cottonwood flame burl.



Rick Orr – Stacked ring bowl of black limba. Winner of Turning Challenge, Intermediate.



Steve Claycomb – Miniature baseball bat (about 3.5") of maple with lasered Rockies logo.



Steve Claycomb – Bowl of cottonwood.

FRONT RANGE WOODTURNERS



Bear Limvere – Stacked ring, segmented bowl of yellowheart and purpleheart. Winner of Turning Challenge, Advanced.



Steve Claycomb – Miniature baseball bat with lasered Rockies NL 2007 Winner.



Dave Yeoman – Large, natural-edged vase of box elder burl.



Grover Brown – Wedding vase of aspen (fully hollowed).



Grover Brown – Hollow form of aspen.



Phil Houck – Hollow form of crab apple with copper inlay.



Grover Brown – Large hollow form of maple.



Ron and Betty Ainge – Carved and painted bowl. Donated to Channel 6 Auction. Thanks, Ron and Betty!



Richard Kuvila – “Shell” - carved form with stand of maple.



Phil Houck – Vase with carved rim of crab apple. ❖

Demonstrations

Brian Boase gave a good demonstration about dust, and dust protection in the wood shop. You can access his presentation on the FRW website.

Bruce Perry demonstrated his winged bowls and “Hobbit cupboards.”

FRONT RANGE WOODTURNERS



Bruce Perry (if you could see him under all that hair ☺).



Bruce is turning the piece to make sure that it clears the tool rest. Notice how far off center it is mounted.



Using gouges to thin out the wings (a.k.a. "turning the ghost").



Using a blunt bevel gouge so that he can ride the bevel without have to swivel the tool too much.



Cleaning out the wing under the hollow form.



Using his special curved scrapers to turn behind the hollow form.



Samples of Bruce's tools, with close-ups of the bevels and curves. He's given them a reverse chamfer for use in scraping in tight corners.



FRONT RANGE WOODTURNERS



Rockler

Patronizing their store is the best "thank you" we can give Rockler for their generosity in letting us use their facilities for our ever-growing membership. Keep in mind that they keep the register open late on meeting nights just for us. Just be sure to complete any purchases no later than the mid-meeting break so these poor guys can start shutting down and go home.

As always – all FRW members get 10% off all items, except electrical or sale items, all the time. Just present your FRW membership card at time of purchase. (Note: This offer is only good at the Denver retail location, and is not valid for any other location or for Internet purchases.)

If you have suggestions for tools or materials that Rockler can carry, contact Rich Johnson, manager of the Denver store. Rockler web site: www.rockler.com.

Web Stuff

The Front Range WoodTurners Web site address (**new**):

www.frontrangewoodturners.org

You can contact our webmaster, Jason Springfield, at

Jason_springfield@yahoo.com for suggestions about content.

Get the latest information about upcoming events, meetings, and view the excellent photos of the show and tell gallery.

Other sites of interest:

(Rky Mtn Woodturners, Ft Collins)
www.verinet.com/~drmeli/rmw.html
www.lathes.co.uk
www.woodworkingbasics.com
www.treelineusa.com
www.woodturnerscatalog.com
www.kestrelcreek.com
www.choicewoods.com
www.woodturner.com
www.woodturningonline.com
www.kazistudio.com ❖

Classifieds

Please note: All advertising in the Classifieds is free, but please be sure to notify the newsletter editor if an item is no longer for sale.

Ad Policy – All ads that are older than 3 months will be deleted, unless you contact the newsletter editor.

For Sale - Drill Press, Heavy Duty, Omaha Industrial Tool, Model #DP 12 F, 12 speed, Chuck 5/8 inch, Spindle MT #2. Asking \$175.

Radial Arm Saw, Sears, Model T48 BXG PR-156, 120/240 volt, 13.0/6.5 Amps/A 60 Hz, 1 HP, 3450 RPM. Asking \$175. Call John Busch at 720-252-7746.

For Sale - Jet 1442 lathe. 1 hp 14 inch swing variable speed 450-3000 rpm. Headstock swivels and slides on ways. All original accessories and manual. About 4 years old in excellent shape. \$750 Call Paul Russell @ 720.394.6009

For Sale - 650 bd ft of colobolo is 3", 4" and 5" in widths of 5" to 14" in 3 ft to ft length. I will cut to size. The price range is from \$20 to 35per bd ft Cocobolo is climbing in price because they are limiting the exporting. I have heard that the price could even double this yr. I also have burls from all over the world. Contact Paul Hammer, Lafayette Co, 603 651 8097 or Email: phdconst@yahoo.com

For Sale - Vicmarc VL300 Longbed Lathe. 3HP. Includes Vicmarc 5 1/2" Chuck. Originally paid \$5,000 for lathe and accessories, asking \$3750. Contact Brandon at 303.507.5206. More info: brandonmackie.com

For Sale – New Bosch Router Kit with plunge base, #1617 EUSPK with edge guide and vacuum attachment, \$150. New Delta 16" scroll saw #40-540, variable speed, \$100. New Delta Sharpening Center with wet wheel. #23-710, \$125. Clifton #5 Jack Plane, \$200. Skillsaw Mac 77, wormdrive #HD 77M, \$120. New Rockler 20" Dovetail Jig plus through dovetail template and bits, \$90. Inkra 1000SE miter gauge, telescoping fence, dual arm flip stop, \$90. Contact Dar Martens at 303-988-1684.

For Sale - Bandsaw. Craftsman 12", 2-speed, tilt blade and other features. \$175. Call Steve DeJong at 303-829-0246.

For Sale – Delta lathe. one-phase, forward/reverse/variable speed. Contact Joe Johnson at 951-707-6647. ❖

Club Information

President/Videographer:

Andy Zartman
phone: 303-859-0724
email: AWZartman@gmail.com

Vice-President/Program Director:

Bear Limvere
phone: 303-648-3414
e-mail: [Bear@BearLimvere.com](mailto: Bear@BearLimvere.com)

Treasurer: Ron Ainge
phone: 720-747-4852
email: clu1.2@netzero.net

Secretary/Newsletter

Editor/Membership Chair: Alisa Limvere
phone: 303-648-3414
e-mail: alisalimvere@yahoo.com

Assistant Newsletter Editor:

Ken Miller
phone: 303-947-3049
e-mail: kmiller@figgbridge.com
Deadline for submitting material for inclusion in the newsletter is 15 days before the next meeting.



FRONT RANGE WOODTURNERS

March, 2008, Volume 8 - Number 03

Front Range WoodTurners
P.O. Box 714
Franktown, CO 80116
