



FRONT RANGE WOODTURNERS

December, 2007, Volume 7 - Number 12

Inside this Issue

Upcoming Events	1
News	1
2008 FRW Officer Election	1
Woodworking Show.....	1
December Holiday Party!.....	1
December Holiday Party RSVP.....	1
Parking Courtesy.....	1
Turning Challenge Rules	1
Group Purchases.....	2
AAW Membership.....	2
Perpetual Turning Project.....	2
RMW Invitation	2
Woodcraft Turning Demos.....	2
Club Library	2
Featured Providers	2
Wood Events	2
Materials Suppliers.....	2
Miscellaneous.....	3
Show and Tell	4
Demonstrations	6
Rockler	7
Web Stuff	7
Classifieds	7
Club Information	8
General Meeting Information .	8

Upcoming Events

Important Note: Even though a turning challenge is announced for a meeting, this does not mean that other items can't be brought for the show & tell. Feel free to bring in what you've created and don't feel you have to be a master turner to show off your work.

December – Tuesday , December 4.
Holiday Party! No Turning
Challenge. ❖

News

2008 FRW Officer Election

All received ballots have been counted and the results will be announced at the Holiday Party. Thank you to all who voted.

Woodworking Show

The Woodworking Show was a big success and we received a a lot of interest in our club. Many, many thanks to Mary Christensen and his volunteers for manning the booth and representing FRW to the public.

December Holiday Party!

Boy, this year has zoomed by! We are coming up on the annual FRW Holiday Party held on Tuesday, December 4, starting at 6:30 pm, at the same location as last year, the First Plymouth Congregational Church, 3501 S. Colorado Blvd. It is located at the southwest corner of intersection at Hampden and Colorado, approximately 10 blocks south of Rockler. Use the south door and parking lot. Again, many thanks to Earl and Carol Weibel for getting this for us.

Dinner and soft drinks will be provided. Feel free to bring side dishes, appetizers, and/or desserts. (Desserts, yes!)

Also, we will be having an auction of donated items with all proceeds going to FRW. Feel free to bring

items to donate and/or your checkbook to buy.

Contact Bear or Alisa at 303-648-3414 if you want to volunteer before, during, and after the dinner in cooking, serving, and most importantly, clean up.

December Holiday Party RSVP

Please send an RSVP by Nov. 26 to the Limveres at 303-648-3414 or alisalimvere@yahoo.com with your name and whether you will be bringing a guest. Apologies, but the Holiday Party is reserved for FRW members and one guest each only.

Parking Courtesy

Rockler has requested that we do not park in front of the neighboring open businesses as a courtesy.

Turning Challenge Rules

Here are the rules for the Turning Challenge.

Category – Typically, each month's challenge is the topic from the previous month's demonstration, unless otherwise indicated in the newsletter.

Competing – Please fill out a Show and Tell form for your competition piece and be sure to mark whether you think you are a Beginner, Intermediate, or Advanced turner.

Voting – Please vote once for each experience class. For example, you can vote once for a Beginner, once for an Intermediate, and once

FRONT RANGE WOODTURNERS

for an Advanced piece. Votes are tallied after the break and the winners announced.

You don't have to compete in the Turning Challenge, but it can be fun. Remember that you can bring other types of turnings for the Show and Tell, too.

Group Purchases

There will be no group purchases at the November or December meetings. Contact Dave Hawley and Roger Holmes if you have previously made a purchase and need to pick up a previous purchase. Contact Dave Hawley at 303-443-2332 or at dave_hawley@comcast.net. Contact Roger Holmes at 303-665-8041 or at roger_holmes@comcast.net.

AAW Membership

The American Association of Woodturners (AAW) is our "mother" organization. FRW is a chapter of AAW. AAW has a separate membership fee and program from FRW with multiple benefits, not least of which is their quarterly *American Woodturning* magazine. Check out AAW's website at www.woodturner.org.

Perpetual Turning Project

The concept is for the item brought for the Perpetual Turning Project is the first item in the next month's raffle. The member who wins the turning must bring another turning to the next month's meeting. It's an excellent chance for members to gain pieces made by other members. The turning can be as plain or fancy as you want. Beginners can participate just as much as advanced turners. If the member doesn't want to make a turning, he/she can choose just the

wood, and the next winner can take the turning.

RMW Invitation

The Rocky Mountain Woodturners have an open invitation to their monthly meeting. They meet on the first Thursday after our meeting at the Woodcraft Store, 3718 Draft Horse Dr., Loveland, CO at 7:00 pm. Their website is www.rmwt.org. The Woodcraft phone is 970-292-5940.

Woodcraft Turning Demos

Pete Holtus does demos every Thursday, 6:30-8:30 pm at Woodcraft, 4403 Tamarac Parkway, Denver. Contact Pete at 303-364-5365 for more information.

Steve De Jong will be doing demos at Rockler. Contact Rockler for their schedules.

Club Library

Suggested Items

Contact Jim Applegate for suggestions about materials (books, videos, DVDs) to be added to our club library. The club does have a budget to purchase library materials and look to you to tell us what you want.

Of course, if you want to make donations to the library, all donations are gratefully accepted.

Featured Providers

Rocklers, Colorado Blvd, Denver, provides a 10% discount for club members – see the Rockler section on page 7. Rockler will be keeping the cash register open until the end of the meeting break. Try to do your shopping before the end of the break, so that they can get out quickly after the end of the meeting.

Wood Emporium, Loveland, provides a 10% discount for FRW members.

Klingspor Catalog Orders: Members who signed up can get their 10% discounts by letting them know you're on the FRW member list. Second, if you order on-line, first send an email to sales@woodworkingshop.com with your username (format is first name + last initial - i.e., John Smith would be "johns"), billing address, phone # and preferred password. You will receive a confirmation email within 2 business days. Members can be removed from this email list upon request. To be added or removed from the list, contact Roger Holmes at 303-665-8041 or at roger_holmes@comcast.net.

Craft Supplies offers monthly deals with special discount codes that expire monthly. Discounts and codes will be announced at each FRW meeting.

Wood Events

We receive notices of events, classes, or seminars that we think you may find interesting. (Note: FRW is not endorsing these events, but only providing the information for your convenience.)

Rocky Mount School of Woodturning

Provides Basic, Intermediate, Advanced, and Specialty classes in woodturning. Full facilities. Contact Lee Carter at Rocky Mountain School of Woodturning, 4625 Kiva Drive, La Porte, CO 80535. Phone: 970-221-4382. Email: LLJTC4X4149@CS.COM.

Materials Suppliers

Wood Suppliers

Following is a list of wood suppliers in the Colorado area. If you have more, contact Steve. (Note: FRW is not endorsing these suppliers, but only providing the list for your convenience.)

Rockler Woodworking and Hardware, 2553 S. Colorado Blvd., #108, Denver

FRONT RANGE WOODTURNERS

CO 80222, 303-782-0588, web www.rockler.com.

Consolidated Hardwoods, Inc., 11850 Vance, Broomfield, CO 80020, phone 303-466-1839, fax 303-469-3580.

Swingle Tree Co., 8585 E. Warren Ave., Denver, CO 80231, phone 303-337-6200 or 303-369-2892.

Centennial Wood Co, Inc., 985 S. Logan St., Denver, CO 80209, phone 303-778-6209.

Austin Hardwoods of Denver, Inc., 975 W. Mississippi Ave., 80223, phone 303-733-1292 or 303-722-1007, web www.austinhardwoods.com.

Colorado Tree and Shrubbery Specialists, Inc., 4760 Parfet St., Wheatridge, CO 80033, phone 303-431-4155, web www.colorado-tree.com.

Paxton Wood Source, 4837 Jackson St., Denver, CO 80213, phone 303-399-6047, web www.paxtonwood.com.

Custom Hardwoods, phone 303-280-6381, affiliated with Tech Western Warehouse, 4520 Indiana St., Golden CO 80403, contact Steve Bell phone 303-902-3115, 303-278-6882, or 303-452-9180.

Woodcraft Supply Corp., 4403 S. Tamarac Parkway, Denver, CO 80237, phone 303-290-0007.

Woodcraft Unlimited, Inc., 2301 S. Delaware St., Denver CO 80223, phone 303-778-9103.

Diverse Hardwoods, 617 1st Ave., Longmont, CO 80501, phone 303-651-1020.

TC Woods in Lafayette has local woods and walnut in stock. They also have a bandsaw mill to convert logs into lumber. Contact them at 303-666-8989.

Dennis Lacen has various woods from the Midwest. Contact him at 9477 Highway 85, Fort Lupton, CO, 303-594-7885.

Manzanita Burl from Mt. Lassen, CA. Crimson and gold grained. 20% discount to Woodclub members. Contact jackburl96001@yahoo.com for more information.

Fresh cut Norfolk Island Pine in log form in many sizes; Spalted Citrus, Bay Laurel, Red Cedar and Florida

grown Mahogany. 10% discount to club members. Shipped as individual pieces via UPS or USPS, or in larger amounts via a commercial trucking company. Contact Joe Schneider at jjschneider1@cfl.rr.com.

Tool and Steel Suppliers

Vexor Custom Woodworking Tools, performs blade sharpening 7180 N. Washington St Denver, Co 80229 Tel (303) 286-8906. Rockler provides free drop off and pickup service for Vexor.

Victor Machinery Exchange, Inc. 251 Centre Street New York, NY 10013 Phone: 800-723-5359 <http://www.victornet.com>

MSC Industrial Supply 6100 Stapleton Drive, South Unit A Denver, CO 80216 Local (303) 935-2022 or (800) 332-0210 Fax: (303) 937-1228 Email: branchden@mscdirect.com Web: www.mscdirect.com

DoAll Industrial Supply custom bandsaws 2955 S. Tejon St. Englewood, CO 80110 Phone: 800-92-DOALL Web: www.doall.com

Lab Metal (metal putty for "enhancing" cracks) Alvin Products 350 Merrimack St. Lawrence, MA 01843 Phone: 978-975-4580 Web: www.alvinproducts.com

(Note: FRW is not endorsing these suppliers, but only providing the information for your convenience.)

Misc. Suppliers

Sanding disks - Steve Worcester in Texas (www.turningwood.com or 972-424-7958)

Miscellaneous

Courtesy During Meetings

We have been requested to please stay seated and quiet during the meeting and demonstration as a

courtesy to our demonstrators and fellow members. If you feel the need for conversation during the meeting or demonstration, please feel free to step out into the Rockler store.

Also, we must make sure to return promptly after the break to make sure we don't lose time for our demonstrator.

Contacting the Editor

Due to the hundreds of spam emails that Alisa receives every day, she has requested that if you want to contact her via email, be sure to include "FRW" in the subject line. This will help her not miss your email or accidentally delete it when she is clearing the garbage from her inbox. Her email address is alisalimvere@yahoo.com.

Problems Receiving Emailed Newsletter?

Unfortunately, many email providers are automatically filtering attachments or entire emails because of the proliferation of viruses and spam. If you have signed up for an emailed newsletter, but haven't been receiving it lately, try the following:

- Confirm that your email inbox isn't full. Many email providers will automatically deny emails without telling you if you've used up your space allotment.
- Check with your email provider to see if they are filtering your email without you knowing.
- If your email provider allows you, add the following email addresses to your "Always Allow" or "Do Not Filter" list: You may receive the newsletter from any of these addresses.

alisalimvere@yahoo.com
alisa@standingpeopledesigns.com
matotanka@yahoo.com

- Confirm with Alisa (newsletter editor) or Bear (membership chairman) that your email address is correct.

It's worth setting up to receive the newsletter by email. It saves paper, postage, and you get to see the photos in full color.

FRONT RANGE WOODTURNERS

If all else fails, you can tell Alisa to send you the newsletter in hardcopy via USPS.

Shop Tours

Please contact Tom Wirsing if you would be interested in hosting a shop tour of your shop. You would not need any formal presentation or demonstration unless you would like to. Most members would just like to see how you organize your shop, store equipment and supplies, see any jigs you made or special tools you've made, see some of your turnings and just shoot the breeze in general. It's really kinda fun. You would be surprised to know how much new members appreciate just talking woodturning and getting to know each other. *Try it - you will enjoy it and so will those who come.*

AAW Scam Warning

The following was received from AAW:

Recently one or more people have received telephone calls to join the AAW or to subscribe to the AW Journal (magazine). Here are the facts:

The AAW does not do any telemarketing or phone soliciting for membership or magazine subscriptions.

The AAW does not endorse any agents to solicit AAW membership or magazine subscriptions.

Any such telephone call you receive to this effect is a form of "phishing," where an unscrupulous person is trying to get your credit card or other personal information for their illegal usage. You should not give out your credit card number or personal information as a general policy unless you initiate the phone call to a known business. ❖

Show and Tell

The turning challenge for November was winged drinking vessels or bowls.



Richard Myers – Walking stick of tzalan Mexican walnut.



Steve Claycombs – Ornaments of various woods.



Steve Claycomb – Birdhouse ornament with turned stand.



Bruce Perry – Winged vessels of various woods. "Some playful shapes for when treen just won't entertain."



Steve Claycomb – Bowl of spalted birch.



Jim Gennack – Segmented hollow form of maple, walnut, and oak.



Bear Limvere – Winged vessel with carved handle of ash.



Bear Limvere – Handled drinking bowl of walnut.



Rick Fleming – Bowl of walnut.

FRONT RANGE WOODTURNERS



Bear Limvere – Broken draw nut. What happens when something gets out of balance at 3000 RPM. Lathe handle self-destructed while he was turning something. It flung itself across the shop and bounced off the far wall. Good reason to wear face protection, eh?



David Nittmann – “From the Dark Side” winged vessel with natural edge of maple burl.



Jill Rice – Hollow form of carob.



Richard and Janet Kuvila – Cheese board of ambrosia maple and hand-painted glass dome.



Jill Rice – Potpourri bowl of walnut and metal.



David Nittmann – “Only Some Want to Fly” winged vessel of mesquite. Turned with multiple axis.



Grover Brown – Bowl of walnut.



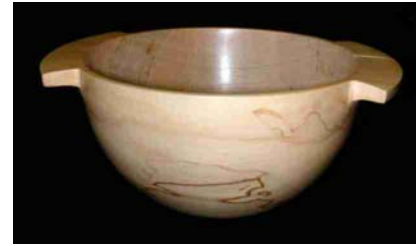
Bruce Perry – “Hobbit cupboards” of elm and birch.



Bruce Perry – Winged vessels of pine.



Bruce Perry – Double-sided bowl of birch.



Randy Weems – Winged bowl of spalted maple. Winner of the Beginner Turning Challenge.



George Dorry – “Round and Round She Goes” Ikebana vase of cottonwood.

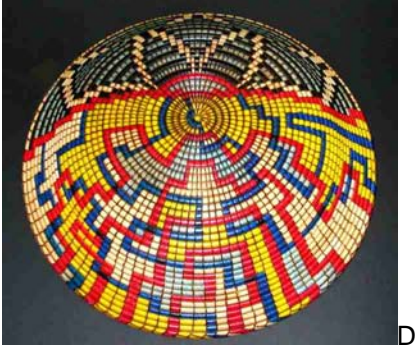


Jason Springfield – Bottle stoppers of tulipwood, kingwood, honey locust, and cocobolo.

FRONT RANGE WOODTURNERS



Grover Brown – Hollow vessel of persimmon.



David Nittmann – “Morrison Blossom” of bamboo with his signature basketwork detail. Top and bottom views.



Bruce Perry – Bowl with various treen, including miniature winged

vessels. Winner of the Advanced Turning Challenge.



David Nittmann – “NEEBAG VI” hollow form with basketwork detail.



George Dorry – Ikebana vase of redwood burl. ❖

Demonstrations

Keith Gotschall demonstrated an eccentric bowl with beaded detail.



Mr. Gotschall himself.



Samples of his work. Wide-rimmed bowl of anjan and ebony.



Wide-rimmed bowl of holly and ebony. Top and bottom view. Note the inlaid ring.



Wide-rimmed of ebony and holly. Top and bottom view. Beautiful contrast to previous piece.



Wide-rimmed bowl of zebrano.

FRONT RANGE WOODTURNERS



Wide-rimmed bowl of amboyna burl and ebony.



Keith is roughing out shape.



Keith is starting to turn the beads for the top.



Bowl has been remounted to an eccentric axis and hollowed.❖

Rockler

Patronizing their store is the best "thank you" we can give Rockler

for their generosity in letting us use their facilities for our ever-growing membership. Keep in mind that they keep the register open late on meeting nights just for us. Just be sure to complete any purchases no later than the mid-meeting break so these poor guys can start shutting down and go home.

As always – all FRW members get 10% off all items, except electrical or sale items, all the time. Just present your FRW membership card at time of purchase. (Note: This offer is only good at the Denver retail location, and is not valid for any other location or for Internet purchases.)

If you have suggestions for tools or materials that Rockler can carry, contact Rich Johnson, manager of the Denver store. Rockler web site: www.rockler.com.

Web Stuff

The Front Range WoodTurners Web site address:

www.frontrangewoodturners.com

You can contact our webmaster, Jason Springfield, at Jason_springfield@yahoo.com for suggestions about content.

Get the latest information about upcoming events, meetings, and view the excellent photos of the show and tell gallery.

Other sites of interest:

(Rky Mtn Woodturners, Ft Collins)
www.verinet.com/~drmelli/rmw.html
www.lathes.co.uk
www.woodworkingbasics.com
www.treelineusa.com
www.woodturnerscatalog.com
www.kestrelcreek.com
www.choicewoods.com
www.woodturner.com
www.woodturningonline.com
www.kazistudio.com ❖

Classifieds

Please note: All advertising in the Classifieds is free, but please be sure

to notify the newsletter editor if an item is no longer for sale.

Ad Policy – All ads that are older than 3 months will be deleted, unless you contact the newsletter editor.

For Sale - Bandsaw. Craftsman 12", 2-speed, tilt blade and other features. \$175. Call Steve DeJong at 303-829-0246.

For Sale - Woodfast lathe 16" throw 39" between centers. Lathe is 110v and electronic variable speed. Included is the factory outboard tool rest/stand. In great shape asking \$2,200 obo. Call John Kyler at 303-278-7910 or catch me at Rockler.

For Sale – Delta lathe. one-phase, forward/reverse/variable speed. Contact Joe Johnson at 951-707-6647.

For Sale – Craftsman Lathe, Heavy-duty 15-inch, 2HP maximum. Variable 400-2,000 rpm. 15" inboard turning capacity. Headstock swivels up to 180 deg. for outboard turning up to 20". Quick lock control levels easily positions tool rest. 38 inches between centers. Includes 4" faceplate. 6" and 12" toolrests, plus standard accessories. \$225. 8" Faceplate for \$20. Duplicator for lathe, \$120. \$320 takes both lathe and duplicator. Call Grover Brown at 303-985-2608.

For Sale – Foremost lathe. ¾ HP, 12" bowl clearance, 37" between centers, 12" to 6" toolrests. 4" to 5" faceplates. Asking \$130 for the above. Call Grover Brown at 303-985-2608.

For Sale - Delta Q3 18" scroll saw, used for one project, works great \$295 obo. Magnifier light with flex arm and clamp \$45 obo. Oneway Vari-grind Jig for Wolverine system \$40. S-curve bowl rest (item108-0200 in Crafts Supply catalog) with 1"x 3" toolpost \$40 for set. 1/2" steb center No. 2 MT (item163-0250 Pg 54 in Crafts Supply Catalog) \$52. Nova Revolving Multi function Center (Item 100-4200 pg 55 in Crafts Supply Catalog) \$90. Contact Andy Zartman at phone: 303-859-0724, email AWZartman@gmail.com

For Sale - Powermatic Model 90 lathe, variable speed, being rebuilt with headstock lift for 20" swing (or 24" possible). 1 HP, 1ph motor. Price \$1750. Call Mike Zipparo, 303-805-8336.❖

FRONT RANGE WOODTURNERS

Club Information

President: Tom Wirsing
phone: 303-717-9427
e-mail:
tom.wirsing@mesanetworks.net

Vice President/Program Director/Videographer: Andy Zartman
phone: 303-859-0724
email: AWZartman@gmail.com

Treasurer: Ron Ainge
phone: 720-747-4852
email: clu1.2@netzero.net

Secretary & Newsletter Editor:
Alisa Limvere
phone: 303-648-3414
e-mail: alisalimvere@yahoo.com
Deadline for submitting material for inclusion in the newsletter is 15 days before the next meeting.

Membership & Publicity Chairman:
Bear Limvere
phone: 303-648-3414
e-mail: Bear@BearLimvere.com

Librarian:
Raffle-Wood Director: Lavonne Kaiser
phone: 303-791-6206
Group Buy Coordinators: Dave Hawley
phone: 303-443-2332
email: dave_hawley@comcast.net

Roger Holmes
phone: 303-665-8041,
roger_holmes@comcast.net.
Shop Tour & Mentor Program Chairman: Open

Internet Chairman: Jason Springfield
phone: 720-283-4000
email: Jason_springfield@yahoo.com.

Colorado Blvd. #108 Denver, CO (west side of Colorado Blvd. opposite the mall).

Meetings are 6:30 PM – 9:00 PM.



General Meeting Information

Normal meetings are the first Tuesday of every month, unless otherwise rescheduled.

Meeting place is at Rockler Woodworking & Hardware, 2553 So.



FRONT RANGE WOODTURNERS

December, 2007, Volume 7 - Number 12

Front Range WoodTurners
P.O. Box 714
Franktown, CO 80116