



FRONT RANGE WOODTURNERS

October, 2007, Volume 7 - Number 10

Inside this Issue

Upcoming Events	1
News	1
<i>Allen Batty Schedules</i>	1
<i>Wood Salvage</i>	1
<i>2008 FRW Officer</i>	
<i>Nominations</i>	1
<i>Woodworking Show</i>	2
<i>Volunteers Needed</i>	2
<i>Parking Courtesy</i>	2
<i>Turning Challenge Rules</i>	2
<i>Group Purchases</i>	2
<i>AAW Membership</i>	3
<i>Perpetual Turning Project</i>	3
<i>RMW Invitation</i>	3
<i>Woodcraft Turning Demos</i>	3
<i>Club Library</i>	3
<i>Featured Providers</i>	3
<i>Wood Events</i>	3
<i>Materials Suppliers</i>	4
<i>Miscellaneous</i>	4
Show and Tell	5
Demonstrations	7
Rockler	8
Web Stuff	8
Classifieds	8
Club Information	8
<i>General Meeting Information</i>	8

Upcoming Events

Important Note: Even though a turning challenge is announced for a meeting, this does not mean that other items can't be brought for the show & tell. Feel free to bring in what you've created and don't feel you have to be a master turner to show off your work.

October – Tuesday, October 2. Bear Limvere will be demonstrating the traditional winged drinking vessel: the Scottish "quaichs", which has two handles, and the one-handled Norwegian vessel. Saturday, October 20 – Allen Batty will be giving a full-day

demonstration, 9:00 am to 4:30 pm. Turning challenge – hollow forms.

November – Tuesday, November 6. Keith Gotschall will be demonstrating, subject to be announced.

December – Tuesday, December 4. Holiday Party! ❖

News

Allen Batty Schedules

We've seen the son, now we'll be seeing the dad. Here's your chance for up-close and personal classes given by Allen Batty, Stuart Batty's father. He is a world-renown turner, author, and woodturning tool designer.

Mr. Batty will be giving a free, all-day demonstration on October 20 at Rockler in Denver. In addition, Mr. Batty will be giving classes at Rockler. Cost will be \$200 each for 3 people, or \$100 each if 6 people sign up, per day.

There are still openings, but they are going fast!! If you are interested, contact Andy Zartman at phone: 303-859-0724, email: AWZartman@gmail.com

Below is the schedule for Mr. Batty in Colorado:

Oct 20 - All day free demo: Skew chisel, thread chasing, platters. 9:00 am – 5:00 pm with a break for lunch. Thread chasing material provided. Students must bring platter material.

Oct 22 - Denver – 1-day Class: thread chasing, boxes. 5-6 students. 8:00 am – 4:30 pm. Thread chasing material provided. Students must bring box material

Oct 23 - Denver – 1-day Class:

thread chasing, boxes. 5-6 students. 8:00 am – 4:30 pm. Thread chasing material provided. Students must bring box material. If student attended class on 10/22, can bring platter material and Alan will work with that.

Wood Salvage

Jerry Smith has announced that the Broomfield Senior Center will have lots of scrap hardwood available for free salvage. Great for segmented work. A work party will be organized in October Friday or Saturday. Contact Jerry at 303-466-7912 if you are interested.

2008 FRW Officer Nominations

Yeah, yeah, elections again, but this time you can make a difference. At the November meeting, we will be accepting nominations for the 2008 FRW Officers. Nominations will be gathered at the October meeting. Feel free to nominate yourself! Ballots will be mailed to members immediately after the October meeting.

The deadline for the ballots to be returned is Thanksgiving. Mail them to Alisa Limvere, Club Secretary, at the return address of this newsletter or bring them to the November meeting and drop them into the ballot box.

The results will be announced at the December Holiday Party.

Following are the offices/positions that need to be filled for 2008:

- President – Responsibilities include running club meetings,

FRONT RANGE WOODTURNERS

“executive” duties in running FRW, and liaison with the woodturning community.

- Vice President/Program Director – Responsibilities include scheduling demonstrators for club meetings, coordinating demonstrators with other clubs, and performing President’s duties if he/she is not available.
- Treasurer – Responsibilities include managing club’s finances, creating financial sheets, gathering and tracking membership dues, and reporting financial status to members.
- Secretary and Newsletter Editor – Responsibilities include creating and publishing monthly newsletter to members, running Turning Challenge at meetings, and general note taking.
- Membership and Publicity Chairman – Responsibilities include maintaining member list, coordinating with Newsletter Editor to create mailing labels and email lists, coordinating with Treasurer to keep member list current with paid dues.
- Librarian – Responsibilities include checking materials in and out of the library, purchasing additional materials for the library, and maintaining the inventory list for the library.
- Raffle-Wood Director – Responsibilities include gathering wood donations, bringing them to the club meetings, and running the raffles at the meetings.
- Group Buy Coordinators – Responsibilities include liaison with vendors, maintenance of member lists for vendors, coordinating group buy purchases, and distributing purchases to buyers.
- Shop Tour/Mentoring Program Chairman – Scheduling and coordinating shop tours and mentoring classes with Rockler.
- Internet Chairman – Responsibilities include creation and maintenance of the FRW website, posting newsletters and news items to the site, and anything else that sounds interesting.

Woodworking Show

The Woodworking Show will be arriving in Denver on November 16 (*correction*). FRW has a booth where volunteers demonstrate turning and hand out flyers for our club. If you think you want to volunteer, contact Mary Christensen at 303-252-7776. (Last year, volunteers got in free!)

Volunteers Needed

Gene Wentworth is retiring from being our coffee person. We need volunteers who can show up at 5:00 pm at Rockler before each meeting to brew coffee and setup. Please contact Tom Wirsing if you think you can do this. Otherwise, we’ll have to be coffee-less at our meetings.

We also need a volunteer to continue the mentoring sessions, held at Rockler. Mentoring sessions provide the opportunity for FRW members to make some sawdust and learn some techniques. Please contact Tom Wirsing if you think you can do this.

Parking Courtesy

Rockler has requested that several parking spots be left open in front of the neighboring, open stores as a courtesy.

Turning Challenge Rules

Here are the rules for the Turning Challenge.

Category – Typically, each month’s challenge is the topic from the previous month’s demonstration, unless otherwise indicated in the newsletter.

Competing – Please fill out a Show and Tell form for your competition piece and be sure to mark whether

you think you are a Beginner, Intermediate, or Advanced turner.

Voting – Please vote once for each experience class. For example, you can vote once for a Beginner, once for an Intermediate, and once for an Advanced piece. Votes are tallied after the break and the winners announced.

You don’t have to compete in the Turning Challenge, but it can be fun. Remember that you can bring other types of turnings for the Show and Tell, too.

Group Purchases

Dave Hawley and Roger Holmes are Group Buy Coordinators and have made arrangements with multiple vendors for discounts applicable to group purchases. Participation in these orders is reserved for full FRW members. Orders are either placed on distributed order forms, order forms available on the FRW website, or order forms created by members.

You must sign up with Roger or Dave for group purchase discounts. It is FRW’s policy that we do not provide our member roster to vendors, so if you want to tap into these discounts, please be sure to sign up.

Vendors:

- Industrial Abrasives – Min. order \$50. Includes sanding disks/mandrels. 5% shipping, or wholesale prices with 10% shipping. No tax. Contact Dave Hawley.
- Handibond (CA Glue) – Min. order \$100. No tax, no shipping. Contact Dave Hawley.
- Woodcarvers Supply – Min. order \$170. 10% discount everything in catalog. \$7.50 shipping split between all members participating in order. No tax. Contact Dave Hawley.
- Craft Supplies – Min. order \$1,000. Discounts vary. Usually 13% for non-powered items.

FRONT RANGE WOODTURNERS

Machinery and special shipping items will differ. No tax. Contact Roger Holmes.

- Klingspor – Member can make Individual orders once signed up. Does not require bulk order. Contact Roger Holmes.
- Tickler! - Details about a Group purchase of 3M Airmate 5 (hardhat) dust masks will be available during the 10/2 meeting - we need a total of 6 masks ordered at a time to garner a 20% discount, and used helmets (new facemask and innards) are also available. If we have at least 6 orders, we will order in Nov for delivery in Dec. If you can't make the Oct meeting and are interested, please contact either Dave or Roger for an e-copy of the information."

Following is the schedule for the bulk order for 2007:

- Oct – Craft Supplies, Industrial Abrasives, Handibond, Woodcarvers Supply, Hartville Tool
- Nov & Dec - None

Contact Dave Hawley at 303-443-2332 or at dave_hawley@comcast.net.
Contact Roger Holmes at 303-665-8041.

Note: If you can find the item at Rockler, please be sure to purchase it from them. We do owe it to them for providing our meeting area and additional events at their store.

AAW Membership

The American Association of Woodturners (AAW) is our "mother" organization. FRW is a chapter of AAW. AAW has a separate membership fee and program from FRW with multiple benefits, not least of which is their quarterly *American Woodturning* magazine. Check out AAW's website at www.woodturner.org.

Perpetual Turning Project

The concept is for the item brought for the Perpetual Turning Project is the first item in the next month's raffle. The member who wins the turning must bring another turning to the next month's meeting. It's an excellent chance for members to gain pieces made by other members. The turning can be as plain or fancy as you want. Beginners can participate just as much as advanced turners. If the member doesn't want to make a turning, he/she can choose just the wood, and the next winner can take the turning.

RMW Invitation

The Rocky Mountain Woodturners have an open invitation to their monthly meeting. They meet on the first Thursday after our meeting at the Woodcraft Store, 3718 Draft Horse Dr., Loveland, CO at 7:00 pm. Their website is www.rmwt.org. The Woodcraft phone is 970-292-5940.

Woodcraft Turning Demos

Pete Holtus does demos every Thursday, 6:30-8:30 pm at Woodcraft, 4403 Tamarac Parkway, Denver. Contact Pete at 303-364-5365 for more information.

Steve De Jong will be doing demos at Rockler. Contact Rockler for their schedules.

Club Library

Suggested Items

Contact Jim Applegate for suggestions about materials (books, videos, DVDs) to be added to our club library. The club does have a budget to purchase library

materials and look to you to tell us what you want.

Of course, if you want to make donations to the library, all donations are gratefully accepted.

Featured Providers

Rocklers, Colorado Blvd, Denver, provides a 10% discount for club members – see the Rockler section on page 8. Rockler will be keeping the cash register open until the end of the meeting break. Try to do your shopping before the end of the break, so that they can get out quickly after the end of the meeting.

Wood Emporium, Loveland, provides a 10% discount for FRW members.

Klingspor Catalog Orders: Members who signed up can get their 10% discounts by letting them know you're on the FRW member list. Second, if you order on-line, first send an email to sales@woodworkingshop.com with your username (format is first name + last initial - i.e., John Smith would be "johns"), billing address, phone # and preferred password. You will receive a confirmation email within 2 business days. Members can be removed from this email list upon request. To be added or removed from the list, contact Roger Holmes at 303-665-8041.

Craft Supplies offers monthly deals with special discount codes that expire monthly. Discounts and codes will be announced at each FRW meeting.

Wood Events

We receive notices of events, classes, or seminars that we think you may find interesting. (Note: FRW is not endorsing these events, but only providing the information for your convenience.)

Rocky Mount School of Woodturning

Provides Basic, Intermediate, Advanced, and Specialty classes in woodturning. Full facilities. Contact Lee Carter at Rocky Mountain School of Woodturning, 4625 Kiva Drive, La Porte, CO 80535. Phone: 970-221-

FRONT RANGE WOODTURNERS

4382. Email:
LLJTC4X4149@CS.COM.

Materials Suppliers

Wood Suppliers

Following is a list of wood suppliers in the Colorado area. If you have more, contact Steve. (Note: FRW is not endorsing these suppliers, but only providing the list for your convenience.)

Rockler Woodworking and Hardware, 2553 S. Colorado Blvd., #108, Denver CO 80222, 303-782-0588, web www.rockler.com.

Consolidated Hardwoods, Inc., 11850 Vance, Broomfield, CO 80020, phone 303-466-1839, fax 303-469-3580.

Swingle Tree Co., 8585 E. Warren Ave., Denver, CO 80231, phone 303-337-6200 or 303-369-2892.

Centennial Wood Co, Inc., 985 S. Logan St., Denver, CO 80209, phone 303-778-6209.

Austin Hardwoods of Denver, Inc., 975 W. Mississippi Ave., 80223, phone 303-733-1292 or 303-722-1007, web www.austinhardwoods.com.

Colorado Tree and Shrubbery Specialists, Inc., 4760 Parfet St., Wheatridge, CO 80033, phone 303-431-4155, web www.colorado-tree.com.

Paxton Wood Source, 4837 Jackson St., Denver, CO 80213, phone 303-399-6047, web www.paxtonwood.com.

Custom Hardwoods, phone 303-280-6381, affiliated with Tech Western Warehouse, 4520 Indiana St., Golden CO 80403, contact Steve Bell phone 303-902-3115, 303-278-6882, or 303-452-9180.

Woodcraft Supply Corp., 4403 S. Tamarac Parkway, Denver, CO 80237, phone 303-290-0007.

Woodcraft Unlimited, Inc., 2301 S. Delaware St., Denver CO 80223, phone 303-778-9103.

Diverse Hardwoods, 617 1st Ave., Longmont, CO 80501, phone 303-651-1020.

TC Woods in Lafayette has local woods and walnut in stock. They also

have a bandsaw mill to convert logs into lumber. Contact them at 303-666-8989.

Dennis Lacen has various woods from the Midwest. Contact him at 9477 Highway 85, Fort Lupton, CO, 303-594-7885.

Manzanita Burl from Mt. Lassen, CA. Crimson and gold grained. 20% discount to Woodclub members. Contact jackburl96001@yahoo.com for more information.

Fresh cut Norfolk Island Pine in log form in many sizes; Spalted Citrus, Bay Laurel, Red Cedar and Florida grown Mahogany. 10% discount to club members. Shipped as individual pieces via UPS or USPS, or in larger amounts via a commercial trucking company. Contact Joe Schneider at jschneider1@cfl.rr.com.

Tool and Steel Suppliers

Vexor Custom Woodworking Tools, performs blade sharpening 7180 N. Washington St Denver, Co 80229 Tel (303) 286-8906. Rockler provides free drop off and pickup service for Vexor.

Victor Machinery Exchange, Inc. 251 Centre Street New York, NY 10013 Phone: 800-723-5359 <http://www.victornet.com>

MSC Industrial Supply 6100 Stapleton Drive, South Unit A

Denver, CO 80216
Local (303) 935-2022
or (800) 332-0210
Fax: (303) 937-1228
Email: branchden@mscdirect.com
Web: www.mscdirect.com

DoAll Industrial Supply custom bandsaws 2955 S. Tejon St. Englewood, CO 80110 Phone: 800-92-DOALL Web: www.doall.com

Lab Metal (metal putty for "enhancing" cracks)
Alvin Products
350 Merrimack St.
Lawrence, MA 01843
Phone: 978-975-4580
Web: www.alvinproducts.com

(Note: FRW is not endorsing these suppliers, but only providing the information for your convenience.)

Misc. Suppliers

Sanding disks - Steve Worcester in Texas (www.turningwood.com or 972-424-7958)

Miscellaneous

Courtesy During Meetings

We have been requested to please stay seated and quiet during the meeting and demonstration as a courtesy to our demonstrators and fellow members. If you feel the need for conversation during the meeting or demonstration, please feel free to step out into the Rockler store.

Also, we must make sure to return promptly after the break to make sure we don't lose time for our demonstrator.

Contacting the Editor

Due to the hundreds of spam emails that Alisa receives every day, she has requested that if you want to contact her via email, be sure to include "FRW" in the subject line. This will help her not miss your email or accidentally delete it when she is clearing the garbage from her inbox. Her email address is alialimvere@yahoo.com.

Problems Receiving Emailed Newsletter?

Unfortunately, many email providers are automatically filtering attachments or entire emails because of the proliferation of viruses and spam. If you have signed up for an emailed newsletter, but haven't been receiving it lately, try the following:

- Confirm that your email inbox isn't full. Many email providers will automatically deny emails without telling you if you've used up your space allotment.
- Check with your email provider to see if they are filtering your email without you knowing.
- If your email provider allows you, add the following email addresses to your "Always Allow" or "Do Not

FRONT RANGE WOODTURNERS

Filter" list: You may receive the newsletter from any of these addresses.

alisalimvere@yahoo.com
alisa@standingpeopledesigns.com
matotanka@yahoo.com

- Confirm with Alisa (newsletter editor) or Bear (membership chairman) that your email address is correct.

It's worth setting up to receive the newsletter by email. It saves paper, postage, and you get to see the photos in full color.

If all else fails, you can tell Alisa to send you the newsletter in hardcopy via USPS.

Shop Tours

Please contact Tom Wirsing if you would be interested in hosting a shop tour of your shop. You would not need any formal presentation or demonstration unless you would like to. Most members would just like to see how you organize your shop, store equipment and supplies, see any jigs you made or special tools you've made, see some of your turnings and just shoot the breeze in general. It's really kinda fun. You would be surprised to know how much new members appreciate just talking woodturning and getting to know each other. *Try it - you will enjoy it and so will those who come.*

AAW Scam Warning

The following was received from AAW:

Recently one or more people have received telephone calls to join the AAW or to subscribe to the AW Journal (magazine). Here are the facts:

The AAW does not do any telemarketing or phone soliciting for membership or magazine subscriptions.

The AAW does not endorse any agents to solicit AAW membership or magazine subscriptions.

Any such telephone call you receive to this effect is a form of "phishing," where an unscrupulous person is trying to get your credit card or other personal information for their illegal

usage. You should not give out your credit card number or personal information as a general policy unless you initiate the phone call to a known business. ❖

Show and Tell

The turning challenge for September was tools or tool handles, but there were no entries.



Rolla Lowery – Lidded boxes of maple burl and walnut.



Rolla Lowery – Lidded boxes of olive and maple burl.



Pete Holtus – Hollow form of ebony maple.



Rolla Lowery – Detail of lattice top lidded box of walnut and maple burl.



Bruce Perry – Lidded hollow form of elm with finial top.



Frank Vonau – Top view of laminated lidded box of maple and purpleheart.



Pete Holtus – Lidded box of maple burl.



Pete Holtus – Ornament and eccentric stand of walnut, burl, and maple.

FRONT RANGE WOODTURNERS



Pete Holtus – Lidded box of mahogany with boxwood finial.



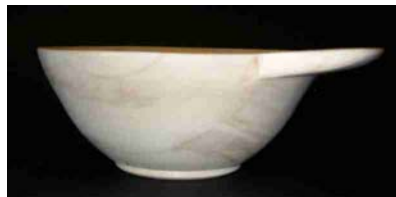
Harry Munson – Segmented vase of Brazilian cherry and maple.



Jim Gennack – Beautiful segmented hollow form of walnut and maple.



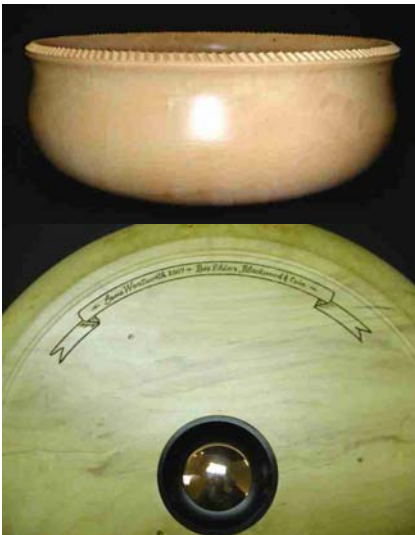
Gene Wentworth – Laminated vase of wenge, bamboo, pink ivory, and aluminum.



Bear Limvere – Traditional Norwegian winged drinking vessel.



Frank Vonau – Lidded box of cherry.



Gene Wentworth – Large bowl of box elder, blackwood, and coin. Detail of pyrography signature on bottom.



Frank Vonau – Bowl of cherry.



Frank Vonau – Winged bowl of red oak.



Steve Claycomb – Bowl of spalted maple.



Pete Holtus – Unique ornaments of walnut and sea urchin shells. Very imaginative!

FRONT RANGE WOODTURNERS



Steve Claycomb – Bowl of hackberry.



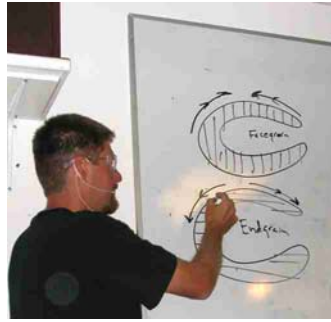
Paul Stafford - Side and top view of beautifully carved walnut hollow form (looks like leather!) with flicker feather decoration. ❖

Demonstrations

Trent Bosch and Allen Jensen did a tag-team demo of hollow turning, and collaborative design.



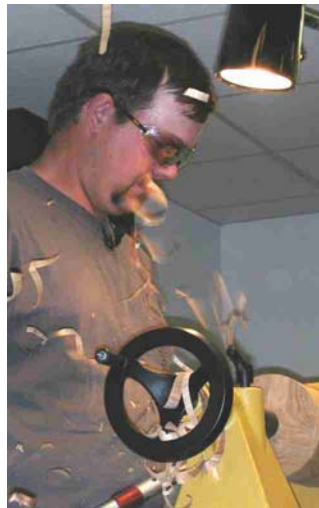
Trent Bosch making shavings.



Trent showing how aligning the blank affects the grain for hollow forms.



Allen Jensen at the lathe.



Making shavings fly!



Trent has taken over and is refining the form. No matter how good you are in the hollowing techniques, it's the outside that people see.



Tip: If a flaw is found, you can move the mounting center away from the flaw, moving the flaw more towards the outside. It will be a little wobbly at first, but you can then turn off the flaw.

Another tip is to place the flaw as close to the bottom of the hollow form since this is the end typically turned to the smallest diameter, so the flaw can be turned off.

However, be aware that flaws add character and can make a nice piece spectacular! ❖

FRONT RANGE WOODTURNERS

Rockler

Patronizing their store is the best "thank you" we can give Rockler for their generosity in letting us use their facilities for our ever-growing membership. Keep in mind that they keep the register open late on meeting nights just for us. Just be sure to complete any purchases no later than the mid-meeting break so these poor guys can start shutting down and go home.

As always – all FRW members get 10% off all items, except electrical or sale items, all the time. Just present your FRW membership card at time of purchase. (Note: This offer is only good at the Denver retail location, and is not valid for any other location or for Internet purchases.)

If you have suggestions for tools or materials that Rockler can carry, contact Rich Johnson, manager of the Denver store. Rockler web site: www.rockler.com.

Web Stuff

The Front Range WoodTurners Web site address:

www.frontrangewoodturners.com

You can contact our webmaster, Jason Springfield, at Jason_springfield@yahoo.com for suggestions about content.

Get the latest information about upcoming events, meetings, and view the excellent photos of the show and tell gallery.

Other sites of interest:

(Rky Mtn Woodturners, Ft Collins)
www.verinet.com/~drmeli/rmw.html
www.lathes.co.uk
www.woodworkingbasics.com
www.treelineusa.com
www.woodturnerscatalog.com
www.kestrelcreek.com
www.choicewoods.com
www.woodturner.com
www.woodturningonline.com
www.kazistudio.com ❖

Classifieds

Please note: All advertising in the Classifieds is free, but please be sure to notify the newsletter editor if an item is no longer for sale.

Ad Policy – All ads that are older than 3 months will be deleted, unless you contact the newsletter editor.

For Sale – Craftsman Lathe, Heavy-duty 15-inch, 2HP maximum. Variable 400-2,000 rpm. 15" inboard turning capacity. Headstock swivels up to 180 deg. for outboard turning up to 20". Quick lock control levels easily positions tool rest. 38 inches between centers. Includes 4" faceplate. 6" and 12" toolrests, plus standard accessories. \$225. 8" Faceplate for \$20. Duplicator for lathe, \$120. \$320 takes both lathe and duplicator. Call Grover Brown at 303-985-2608.

For Sale – Foremost lathe. ¾ HP, 12" bowl clearance, 37" between centers, 12" to 6" toolrests. 4" to 5" faceplates. Asking \$130 for the above. Call Grover Brown at 303-985-2608.

For Sale - Delta Q3 18" scroll saw, used for one project, works great \$295 obo. Magnifier light with flex arm and clamp \$45 obo. Oneway Vari-grind Jig for Wolverine system \$40. S-curve bowl rest (item108-0200 in Crafts Supply catalog) with 1"x 3" toolpost \$40 for set. 1/2" steb center No. 2 MT (item163-0250 Pg 54 in Crafts Supply Catalog) \$52. Nova Revolving Multi function Center (Item 100-4200 pg 55 in Crafts Supply Catalog) \$90. Contact Andy Zartman at phone: 303-859-0724, email AWZartman@gmail.com

For Sale - Powermatic Model 90 lathe, variable speed, being rebuilt with headstock lift for 20" swing (or 24" possible). 1 HP, 1ph motor. Price \$1750. Call Mike Zipparo, 303-805-8336. ❖

Club Information

President: Tom Wirsing
phone: 303-717-9427
e-mail:
tom.wirsing@mesanetworks.net

Vice President/Program Director/Videographer Andy Zartman

phone: 303-859-0724
email: AWZartman@gmail.com

Treasurer: Ron Ainge
phone: 720-747-4852
email: clu1.2@netzero.net

Secretary & Newsletter Editor:
Alisa Limvere
phone: 303-648-3414
e-mail: alisalimvere@yahoo.com
Deadline for submitting material for inclusion in the newsletter is 15 days before the next meeting.

Membership & Publicity Chairman:
Bear Limvere
phone: 303-648-3414
e-mail: [Bear@BearLimvere.com](mailto: Bear@BearLimvere.com)

Librarian:
Raffle-Wood Director: Lavonne Kaiser
phone: 303-791-6206
Group Buy Coordinators: Dave Hawley
phone: 303-443-2332
email: dave_hawley@comcast.net
Roger Holmes
phone: 303-665-8041,
rogerholmes@earthlink.net
Shop Tour & Mentor Program
Chairman: Open

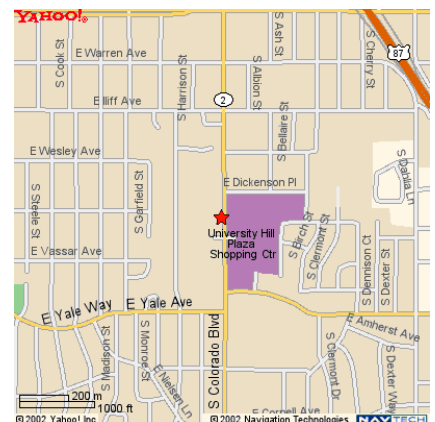
Internet Chairman: Jason Springfield
phone: 720-283-4000
email: Jason_springfield@yahoo.com.

General Meeting Information

Normal meetings are the first Tuesday of every month, unless otherwise rescheduled.

Meeting place is at Rockler Woodworking & Hardware, 2553 So. Colorado Blvd. #108 Denver, CO (west side of Colorado Blvd. opposite the mall).

Meetings are 6:30 PM – 9:00 PM.





FRONT RANGE WOODTURNERS

October, 2007, Volume 7 - Number 10

Front Range WoodTurners
P.O. Box 714
Franktown, CO 80116