



FRONT RANGE WOODTURNERS

February, 2007, Volume 7 - Number 02

Inside this Issue

Upcoming Events	1
News	1
<i>Nominations for 2007 Officers</i>	1
<i>Dues are Due, Dudes</i>	1
<i>Holiday Party</i>	2
<i>Thanks, John</i>	2
<i>Turning Challenge Rules</i>	2
<i>Bulk Orders</i>	2
<i>Channel Six Auction</i>	2
<i>AAW Membership</i>	3
<i>Perpetual Turning Project</i>	3
<i>Applications for Demonstrators</i>	3
<i>Mentoring Classes</i>	3
<i>RMW Invitation</i>	3
<i>Volunteers Needed</i>	3
<i>Woodcraft Turning Demos</i>	3
<i>Club Library</i>	3
<i>Featured Providers</i>	3
<i>Wood Events</i>	4
<i>Materials Suppliers</i>	4
<i>Miscellaneous</i>	5
Show and Tell	5
Demonstrations	8
Rockler	8
Web Stuff	8
Classifieds	8
Club Information	9
<i>General Meeting Information</i> .	9

Upcoming Events

Important Note: Even though a turning challenge is announced for a meeting, this does not mean that other items can't be brought for the show & tell. Feel free to bring in what you've created and don't feel you have to be a master turner to show off your work.

February – Demonstrator to be announced. Turning challenge: Pens and/or pencils. ❖

News

Nominations for 2007 Officers

We are looking to fill several FRW Board and Office positions.

The Nominating Committee is Pete Holtus, Jill Rice, Jerry Smith, and Andy Zartman. If you want to be added to the Nominating Committee or if you want to nominate someone or, better yet, if you want to volunteer, please contact one of the above Committee members.

Following are the positions:

- President
- Vice-President/Program Manager
- Assistant to Vice-President
- Secretary/Newsletter Editor
- Treasurer
- Librarian
- Group Purchases Coordinator
- Web Master
- Shop Tours Coordinator
- Mentoring Sessions Coordinator

Several existing officers are willing to continue, but if you are interested in a position, feel free to volunteer.

Dues are Due, Dudes

It's that time of year. Annual dues are due again. Dues are the following:

- Individual – \$35
- Couple – \$40

- Student – \$17
- Under 12 years – Free!

To help with tracking payments, we request that you pay using a personal check or money order made out to Front Range Woodturners (no cash, please – we don't carry change).

Our Club Treasurer (to be named) is responsible for gathering dues payments. Bear Limvere, our Club Membership Chair, is responsible for gathering your membership information. Please contact the Treasurer or Bear at the next meeting or mail a check for your dues to the following address:

Front Range WoodTurners
P.O. Box 714
Franktown, CO 80116

Please include the following information with your dues:

Name _____
Spouse Name (if signing on as Couple) _____
Street _____
City _____
State _____ Zip _____
Home Telephone _____
Work Telephone _____
Email _____
Web site _____

By default, if you provide an email address, you will receive your newsletters via email. If you do not want this, please indicate it when you send in your dues and the newsletters will be mailed via USPS.

You will receive multiple benefits of being a member, including but not limited to the following:

- Monthly newsletter

FRONT RANGE WOODTURNERS

- Ability to check items out of our extensive library
- Discounts in regular bulk orders of various supplies
- Discounts at stores in the Denver area (including the 10% discount at our Rockler store!)
- Monthly demonstrations by locally and internationally known woodturners
- Being listed in and receiving a copy of the membership roster
- And last, but not least, access to the best bunch of woodturners around for questions, war stories, or just to visit.

All our club events are funded by your dues.

Important - If your dues are not paid by mid-February, you will no longer receive our newsletter (unless you are a recent guest who is still in the 2-month trial period).

Bear Limvere will be sending out the member roster with the March or April newsletter, so if you want to receive a roster or be in it, please be sure to pay your dues by mid-February.

Holiday Party

Brief update – the auction at the party raised over \$1,400 for the club. Again, many thanks to those who donated and those who purchased.

Thanks, John

Thanks, John Betts, for donating a copy of your *Making Strip-Built Fly Rods* to the FRW Library. This is a beautifully written book, so feel free to check it out.

John will be teaching two classes of his rod-making techniques, scheduled for Part 1 as ½ day on Sat., April 7 and Part 2 as ½ day on Sat., April 14, at Rockler. He will be accepting only 4 people for

this set of classes. The price is \$120-150 per person. If you are interested, contact John at 303-722-7052.

Turning Challenge Rules

To clear up some confusion, here are the rules for the Turning Challenge.

Category – Typically, each month's challenge is the topic from the previous month's demonstration, unless otherwise indicated in the newsletter.

Competing – Please fill out a Show and Tell form for your competition piece and be sure to mark whether you think you are a Beginner, Intermediate, or Advanced turner.

Voting – Please vote once for each experience class. For example, you can vote once for a Beginner, once for an Intermediate, and once for an Advanced piece. Votes are tallied after the break and the winners announced.

Bulk Orders

Dave Hawley, Group Buy Coordinator, has made arrangements with multiple vendors to get discounts when orders from multiple members are combined into a single bulk order. Bulk order discounts are reserved for full members of FRW.

Dave Hawley will have sheets for members to sign up for bulk order discounts. It is FRW's policy that we do not provide our member roster to vendors, so if you want to tap into these discounts, please be sure to sign up.

Vendors:

- Industrial Abrasives – Min. order \$50. Includes sanding disks/mandrels. 5% shipping, or wholesale prices with 10% shipping. No tax.

- Handibond (CA Glue) – Min. order \$100. No tax, no shipping.
- Woodcarvers Supply – Min. order \$170. 10% discount everything in catalog. \$7,50 shipping split between all members participating in order. No tax.
- Craft Supplies – Min. order \$1,000. Discounts vary. Usually 13% for non-powered items. Machinery and special shipping items will differ. No tax.
- Klingspor – Member can make Individual orders once signed up. Does not require bulk order.

Following is the schedule for the bulk order for 2007:

- Feb – Craft Supplies
- Mar - Industrial Abrasives, Handibond, Woodcarvers Supply
- Apr – Craft Supplies
- May – None
- Jun _ Industrial Abrasives, Handibond, Woodcarvers Supply
- Jul – Craft Supplies
- Aug – None
- Sep - Industrial Abrasives, Handibond, Woodcarvers Supply
- Oct – Craft Supplies
- Nov & Dec - None

Check with Dave Hawley at each meeting if you have placed an order with him or if you want to participate in one of the bulk orders that he organizes. You can also contact him at 303-443-2332 or dave_hawley@comcast.net.

Note: If you can find the item at Rockler, please be sure to purchase it from them. We do owe it to them for providing our meeting area and additional events at their store.

Channel Six Auction

FRW members have provided excellent support for the Channel Six Auction in the past. Pete Holtus will be the new coordinator and will be accepting donations through the February meeting. Each donated item must be worth

FRONT RANGE WOODTURNERS

a minimum of \$75. If we reach a minimum total, we will be given our own table to display our items. Members who donate will be invited to the preview party – details to follow.

AAW Membership

The American Association of Woodturners (AAW) is our “mother” organization. FRW is a chapter of AAW. AAW has a separate membership fee and program from FRW with multiple benefits, not least of which is their quarterly *American Woodturning* magazine. **Change:** The previously published website address is no longer able to accept membership renewals and applications. You can go to their website to print the membership form and then mail it to the below address:

American Association of Woodturners
222 Landmark Center
75 West Fifth St. St. Paul, MN 55102
Phone: 651-484-9094
Fax: 651-484-1724 (fax)
inquiries@woodturner.org

You can download the membership form from their website: www.woodturner.org

You can still qualify for the Powermatic 3520B lathe by just noting that you want to enter for it when you send your member info.

<http://www.wmhtoolgroup.com/show/index.sfm?navPage=4&iid=6056397>

Copy the above address into the address field in your web browser. Check out AAW’s website at www.woodturner.org.

Perpetual Turning Project

The concept is for the item brought for the Perpetual Turning Project is

the first item in the next month’s raffle. The member who wins the turning must bring another turning to the next month’s meeting. Repeat. It’s an excellent chance for members to gain pieces made by other members. The turning can be as plain or fancy as you want. Beginners can participate just as much as advanced turners. If the member doesn’t want to make a turning, he/she can choose just the wood, and the next winner can take the turning.

See the Show and Tell section for which item was part of the Perpetual Turning Project.

Applications for Demonstrators

AAW is also asking for applications for demonstrators to the 2007 Woodturners Symposium. Contact them at inquiries@woodturner.org or at 651-484-9094.

Mentoring Classes

Mentoring classes have been cancelled until further notice.

RMW Invitation

The Rocky Mountain Woodturners have an open invitation to their monthly meeting. They meet on the first Thursday after our meeting, 7:00 pm, at a **new location** –

Woodcraft
3718 Draft Horse Drive
Loveland, CO 80538
970-292-5940

Their website is www.rmwt.org.

Volunteers Needed

We need volunteers who can show up at 5:00 pm at Rockler before each meeting to brew coffee and setup. Please contact Ron Bentall or just appear. We’ll put you to work.

Woodcraft Turning Demos

Pete Holtus does demos every Thursday, 6:30-8:30 pm at Woodcraft, 4403 Tamarac Parkway, Denver. Contact Pete at 303-364-5365 for more information.

Club Library

Suggested Items

Contact Jim Applegate for suggestions about materials (books, videos, DVDs) to be added to our club library. The club does have a budget to purchase library materials and look to you to tell us what you want.

Of course, if you want to make donations to the library, all donations are gratefully accepted.

Featured Providers

Rocklers, Colorado Blvd, Denver, provides a 10% discount for club members – see the Rockler section on page 8. Rockler will be keeping the cash register open until the end of the meeting. Try to do your shopping before the end of the break, so that they can get out quickly after the end of the meeting.

Guiry’s Wallpaper and Art Supplies - All six Guiry’s locations are providing to members of Front Range Woodturners discounts on most everything in the store. Give the contractor account number of 7837 and name of “Front Range Woodturners” to the Guiry’s cashier to get your discount.

Wood Emporium, Loveland, provides a 10% discount for FRW members.

Klingspor Catalog Orders: Members who signed up can get their 10% discounts by letting them know you’re on the FRW member list. Second, if you order on-line, first send an email to sales@woodworkingshop.com with your username (format is first name + last initial - i.e., John Smith would be “johns”), billing address, phone # and

FRONT RANGE WOODTURNERS

preferred password. You will receive a confirmation email within 2 business days. Members can be removed from this email list upon request. You can contact Dave Hawley at davedorothy@comcast.net or at 1516 Lodge Court, Boulder, 80303.

Craft Supplies offers monthly deals with special discount codes that expire monthly. Discounts and codes will be announced at each FRW meeting.

Wood Events

We receive notices of events, classes, or seminars that we think you may find interesting. (Note: FRW is not endorsing these events, but only providing the information for your convenience.)

Desert Woodturning Symposium

Held in Mesa, AZ on February 10-11, 2007. See their website for more information:

www.desertwoodturningroundup.com

Black Forest Woodturning Classes

Featured turners include Richard Raffan (possibly last class before retirement) and many other international turners.

Workshops are held at the: Black Forest Wood Co. Bay 7, 603-77th Ave. SE Calgary, Alberta, Canada, T2H 2B9 Contact them for more information at phone: 403 255-6044, toll free in Canada and US 1-877-686-06061

For workshop updates and other woodworking workshops visit www.blackforestwood.com.

Rocky Mount School of Woodturning

Provides Basic, Intermediate, Advanced, and Specialty classes in woodturning. Full facilities. Contact Lee Carter at Rocky Mountain School of Woodturning, 4625 Kiva Drive, La Porte, CO 80535. Phone: 970-221-4382. Email: LLJTC4X4149@CS.COM.

Materials Suppliers

Wood Suppliers

Following is a list of wood suppliers in the Colorado area. If you have more, contact Steve. (Note: FRW is not endorsing these suppliers, but only providing the list for your convenience.)

Rockler Woodworking and Hardware, 2553 S. Colorado Blvd., #108, Denver CO 80222, 303-782-0588, web www.rockler.com.

Consolidated Hardwoods, Inc., 11850 Vance, Broomfield, CO 80020, phone 303-466-1839, fax 303-469-3580.

Swingle Tree Co., 8585 E. Warren Ave., Denver, CO 80231, phone 303-337-6200 or 303-369-2892.

Centennial Wood Co, Inc., 985 S. Logan St., Denver, CO 80209, phone 303-778-6209.

Austin Hardwoods of Denver, Inc., 975 W. Mississippi Ave., 80223, phone 303-733-1292 or 303-722-1007, web www.austinhardwoods.com.

Colorado Tree and Shrubbery Specialists, Inc., 4760 Parfet St., Wheatridge, CO 80033, phone 303-431-4155, web www.colorado-tree.com.

Paxton Wood Source, 4837 Jackson St., Denver, CO 80213, phone 303-399-6047, web www.paxtonwood.com.

Custom Hardwoods, phone 303-280-6381, affiliated with Tech Western Warehouse, 4520 Indiana St., Golden CO 80403, contact Steve Bell phone 303-902-3115, 303-278-6882, or 303-452-9180.

Woodcraft Supply Corp., 4403 S. Tamarac Parkway, Denver, CO 80237, phone 303-290-0007.

Woodcraft Unlimited, Inc., 2301 S. Delaware St., Denver CO 80223, phone 303-778-9103.

Diverse Hardwoods, 617 1st Ave., Longmont, CO 80501, phone 303-651-1020.

TC Woods in Lafayette has local woods and walnut in stock. They also have a bandsaw mill to convert logs into lumber. Contact them at 303-666-8989.

Dennis Lacen has various woods from the Midwest. Contact him at 9477 Highway 85, Fort Lupton, CO, 303-594-7885.

Manzanita Burl from Mt. Lassen, CA. Crimson and gold grained. 20% discount to Woodclub members. Contact jackburl96001@yahoo.com for more information.

Fresh cut Norfolk Island Pine in log form in many sizes; Spalted Citrus, Bay Laurel, Red Cedar and Florida grown Mahogany. 10% discount to club members. Shipped as individual pieces via UPS or USPS, or in larger amounts via a commercial trucking company. Contact Joe Schneider at jschneider1@cfl.rr.com.

Tool and Steel Suppliers

Vexor Custom Woodworking Tools, performs blade sharpening 7180 N. Washington St Denver, Co 80229 Tel (303) 286-8906. A local store in Parker provides a drop-off/pick-up site – call Vexor for information

Victor Machinery Exchange, Inc. 251 Centre Street New York, NY 10013 Phone: 800-723-5359 <http://www.victornet.com>

MSC Industrial Supply 6100 Stapleton Drive, South Unit A Denver, CO 80216 Local (303) 935-2022 or (800) 332-0210 Fax: (303) 937-1228 Email: branchden@mscdirect.com Web: www.mscdirect.com

DoAll Industrial Supply custom bandsaws 2955 S. Tejon St. Englewood, CO 80110 Phone: 800-92-DOALL Web: www.doall.com

Lab Metal (metal putty for “enhancing” cracks) Alvin Products 350 Merrimack St. Lawrence, MA 01843 Phone: 978-975-4580 Web: www.alvinproducts.com

(Note: FRW is not endorsing these suppliers, but only providing the information for your convenience.)

FRONT RANGE WOODTURNERS

Misc. Suppliers

Brandon Mackie has a source of filters for those of you who want to create or maintain filtration in your shop. Contact him at the next meeting or at latherunner@hotmail.com.

Sanding disks - Steve Worcester in Texas (www.turningwood.com or 972-424-7958)

Miscellaneous

Courtesy During Meetings

We have been requested to please stay seated and quiet during the meeting and demonstration as a courtesy to our demonstrators and fellow members. You feel the need for conversation during the meeting or demonstration, please feel free to step out into the Rockler store.

Also, we must make sure to return promptly after the break to make sure we don't lose time for our demonstrator.

Contacting the Editor

Due to the hundreds of spam emails that Alisa receives every day, she has requested that if you want to contact her via email, be sure to include "FRW" in the subject line. This will help her not miss your email or accidentally delete it when she is clearing the garbage from her inbox. Her email address is alisalimvere@yahoo.com.

Problems Receiving Emailed Newsletter?

Unfortunately, many email providers are automatically filtering attachments or entire emails because of the proliferation of viruses and spam. If you have signed up for an emailed newsletter, but haven't been receiving it lately, try the following:

- Confirm that your email inbox isn't full. Many email providers will automatically deny emails without telling you if you've used up your space allotment.
- Check with your email provider to see if they are filtering your email without you knowing.

- If your email provider allows you, add the following email addresses to your "Always Allow" or "Do Not Filter" list:

alisalimvere@yahoo.com
alimvere@mxlogic.com
matotanka@yahoo.com

You may receive the newsletter from any of these addresses.

- Confirm with Alisa (newsletter editor) that your email address is correct.

It's worth setting up to receive the newsletter by email. It saves paper, postage, and you get to see the photos in full color.

If all else fails, you can tell Alisa to send you the newsletter in hardcopy via USPS.

Shop Tours

Please contact Jerry Smith if you would be interested in hosting a shop tour of your shop. You would not need any formal presentation or demonstration unless you would like to. Most members would just like to see how you organize your shop, store equipment and supplies, see any jigs you made or special tools you've made, see some of your turnings and just shoot the breeze in general. It's really kinda fun. You would be surprised to know how much new members appreciate just talking woodturning and getting to know each other. *Try it - you will enjoy it and so will those who come.*

AAW Scam Warning

The following was received from AAW:

Recently one or more people have received telephone calls to join the AAW or to subscribe to the AW Journal (magazine). Here are the facts:

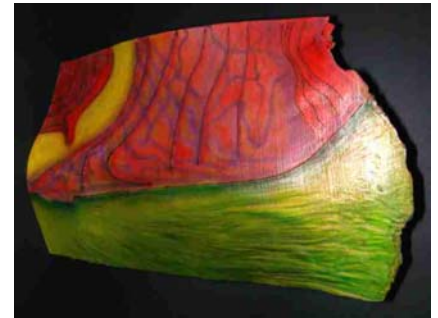
The AAW does not do any telemarketing or phone soliciting for membership or magazine subscriptions.

The AAW does not endorse any agents to solicit AAW membership or magazine subscriptions.

Any such telephone call you receive to this effect is a form of "phishing," where an unscrupulous person is

trying to get your credit card or other personal information for their illegal usage. You should not give out your credit card number or personal information as a general policy unless you initiate the phone call to a known business. ❖

Show and Tell



David Nittmann – "SelfPortHold" painted Christmas card.



Brandon Mackie – Game calls of maple burl and bloodwood.



Brandon Mackie – Game calls of box elder, rosewood, and ebony.

FRONT RANGE WOODTURNERS



Brandon Mackie – Game call of box elder and ebony.



Brandon Mackie – Olive bowl.



Jill Rice – Bowl of natural-edged maple burl.



Pete Holtus – Lidded box of sycamore.



Pete Holtus – Lidded box of box elder, blackwood, and rosewood.



Brandon Mackie – Rosewood pen.



Leroy Ullmann – Dyed box elder pen.



Bert Dalton – Nested natural-edged box elder bowls.



Pete Holtus – Twisted three-sided boxes of cherry.



Pete Holtus – Three-sided lidded cherry boxes.



Pete Holtus – Lidded box of cherry, maple, and amboyna burl.



Pete Holtus – Lattice-topped box of walnut burl and maple.



Pete Holtus – Trembleur of boxwood and rosewood.

FRONT RANGE WOODTURNERS



Pete Holtus – Lidded box of walnut.



Steve Claycomb – Zebirano pen and pencil set.



David Nittmann – Blackwood hollow form with basketwork texture and painted detail.



Richard Kuvila – Aspen lidded vessel.



Turner unknown - Pen of antler.



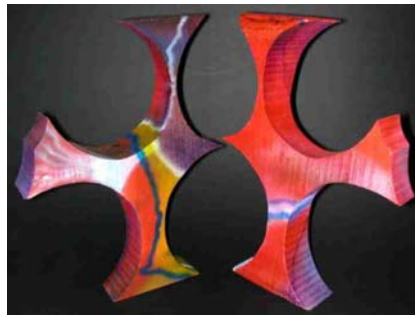
Bruce Perry – Lidded vessel of spalted birch.



Paul Stafford – “Starfish Walking” sculpture of walnut and turquoise.



Paul Stafford – Top view of “Starfish Walking.” Stunning!!



David Nittmann – “Cupla Boids” painted Christmas card.



Steve Claycomb – “Football” of aspen.



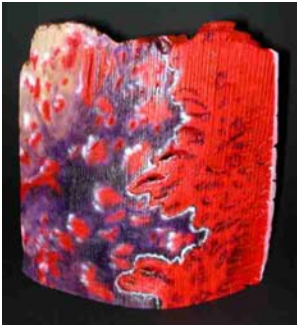
Bruce Perry – Bowl of box elder.



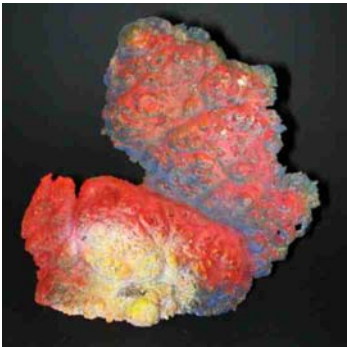
Bruce Perry – Plate of maple burl.



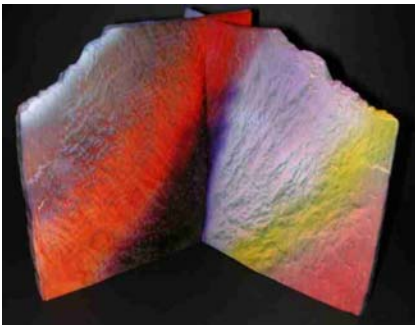
Dave Yeoman – Bowl of natural-edged crab apple.



David Nittmann – “White Cliffs” painted Christmas card.



David Nittmann – “Rabbits Galore” painted Christmas card.



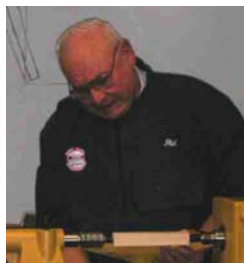
David Nittmann – “Doobel” painted Christmas card. ❖

Demonstrations

We had several demonstrators in a “round-robin” format where members could move from one station to the next.



Gene Wentworth demonstrated sharpening.



Phil Houck – Spindle turning.



Pete Holtus – One of the demonstrators. ❖

Rockler

Patronizing their store is the best “thank you” we can give Rockler for their generosity in letting us use their facilities for our ever-growing membership. Keep in mind that they keep the register open late on meeting nights just for us. Just be sure to complete any purchases no later than the mid-meeting break so these poor guys can start shutting down and go home.

As always – all FRW members get 10% off all items, except electrical or sale items, all the time. Just present your FRW membership card at time of purchase. (Note: This offer is only good at the Denver retail location, and is not valid for any other location or for Internet purchases.)

If you have suggestions for tools or materials that Rockler can carry, contact Rich Johnson, manager of the Denver store. Rockler web site: www.rockler.com.

Web Stuff

The Front Range WoodTurners Web site address:

www.fronrangewoodturners.com

Get the latest information about upcoming events, meetings, and view the excellent photos of the show and tell gallery.

Other sites of interest:

(Rky Mtn Woodturners, Ft Collins)

www.verinet.com/~drmelli/rmw.html

www.lathes.co.uk

www.woodworkingbasics.com

www.treelineusa.com

www.woodturnerscatalog.com

www.kestrelcreek.com

www.choicewoods.com

www.woodturner.com

www.woodturningonline.com

www.kazistudio.com ❖

Classifieds

Please note: All advertising in the Classifieds is free, but please be sure

FRONT RANGE WOODTURNERS

to notify the newsletter editor if an item is no longer for sale.

Ad Policy – All ads that are older than 3 months will be deleted, unless you contact the newsletter editor.

For Sale – Nova Mercury Mini-lathe. Pen turning mandrel and accessories. \$200. Contact Bill Hoppers at 303-424-6052.

For Sale – Powermatic Model 90 wood lathe. Gap bed. Speed range 330-2100 rpm. 110v single phase. \$800. Contact Joe Ray at 303-838-7396 or ray356a@aol.com.

For Sale – Vega Woodlathe, model 1446, 14" swing, 46" length. Duplicator with power driver. Used 1 week. New \$3400. Sell for \$2500. Contact Ken Thielin at 719-647-2450. ❖

Club Information

President: Tom Wirsing
phone: 303-7179427
e-mail:
tom.wirsing@mesanetworks.net

**Vice President/Program
Director/Videographer** Andy Zartman

phone: 303-859-0724
email: AWZartman@gmail.com

Treasurer: Jill Rice
phone: 303-838-2452
email: tree2bowl@yahoo.com

Secretary & Newsletter Editor: Alisa Limvere

phone: 303-648-3414
e-mail: alisalimvere@yahoo.com
Deadline for submitting material for inclusion in the newsletter is 15 days before the next meeting.

Membership & Publicity Chairman:

Bear Limvere
phone: 303-648-3414
e-mail: Bear@BearLimvere.com

Librarian: Jim Applegate

Raffle-Wood Director: Steve Claycomb

Group Buy Coordinator: Dave Hawley
phone: 303-443-2332
email: dave_hawley@comcast.net

Shop Tour & Mentor Program

Chairman: Phil Houck
phone: 303-985-4692

Internet Chairman: Brandon Mackie
email: latherunner@hotmail.com.

Social Chairperson: Rose Phillips
home phone: 303-740-9663 and enter 6014 during the message work, 303-715-0172

General Meeting Information

Normal meetings are the first Tuesday of every month, unless otherwise rescheduled.

Meeting place is at Rockler Woodworking & Hardware, 2553 So. Colorado Blvd. #108 Denver, CO (west side of Colorado Blvd. opposite the mall).

Meetings are 6:30 PM – 9:00 PM.





FRONT RANGE WOODTURNERS

February, 2007, Volume 7 - Number 02

Front Range WoodTurners
P.O. Box 714
Franktown, CO 80116
