



# FRONT RANGE WOODTURNERS

July, 2006, Volume 6 - Number 07

## Inside this Issue

<b>Upcoming Events</b> .....	<b>1</b>
<b>News</b> .....	<b>1</b>
<i>Shoko Adati Demonstration</i> ...	<i>1</i>
<i>Upcoming Classes</i> .....	<i>2</i>
<i>Shop Tour Announcements</i> ...	<i>3</i>
<i>AAW Scam Warning</i> .....	<i>3</i>
<i>Perpetual Turning Project</i> .....	<i>3</i>
<i>Applications for Demonstrators</i>	<i>3</i>
.....	<i>3</i>
<i>Bulk Orders</i> .....	<i>3</i>
<i>Mentoring Classes</i> .....	<i>3</i>
<i>RMW Invitation</i> .....	<i>4</i>
<i>Volunteers Needed</i> .....	<i>4</i>
<i>Woodcraft Turning Demos</i> ....	<i>4</i>
<i>Club Library</i> .....	<i>4</i>
<i>Featured Providers</i> .....	<i>4</i>
<i>Wood Events</i> .....	<i>4</i>
<i>Materials Suppliers</i> .....	<i>5</i>
<i>Miscellaneous</i> .....	<i>5</i>
<b>Show and Tell</b> .....	<b>6</b>
<b>Demonstrations</b> .....	<b>8</b>
<b>Rockler</b> .....	<b>9</b>
<b>Web Stuff</b> .....	<b>9</b>
<b>Classifieds</b> .....	<b>9</b>
<b>Club Information</b> .....	<b>10</b>
<i>General Meeting Information</i>	<i>10</i>

## Upcoming Events

**Important Note:** Even though a turning challenge is announced for a meeting, this does not mean that other items can't be brought for the show & tell. Feel free to bring in what you've created and don't feel you have to be a master turner to show off your work.

**July – Saturday, July 8** (not July 4).  
Chris Stott will be demonstrating 10:00 am – 1:00 pm and 2:00 pm – 5:00 pm.

**August – Tuesday, August 1.**  
Correction: Bruce Perry will be demonstrating.

**September – Tuesday, September 5.**  
TBD.

**October – Tuesday, October 3.** Steve DeJong will be demonstrating Christmas Ornaments.

**November – Tuesday, November 7,**  
TBD.

**December – Tuesday, December 5.**  
Holiday Party. ❖

## News

### Shoko Adati Demonstration

David Nittmann was fortunate enough to set-up a demonstration with Mr. Shoko Adati, one of the remaining three traditionally-trained makers of tea ceremony sets and rooms. We were able to watch as Mr. Adati demonstrated how he uses only traditional hand tools to create extremely fine screens, tea measuring labels, and the ceremonial items used in traditional Japanese tea ceremonies. He had samples of the bamboo that is 100 years old that he uses for some of the pieces.



Mr. Shoko Adati.



Mr. Adati's workshop is a rug spread on the floor, surrounded by the tools he's made himself.



Note his high-tech clamping device.



Closeup of hand-cut tenons.



Trivet made with hand-cut rabbets.



Sharpening his tool on a Japanese water stone.

# FRONT RANGE WOODTURNERS



Traditional chisel showing the cutting angle. This is his "workhorse" tool.



Showing how he carves details.



Showing his posture hold a carving piece. I hope I'm that limber at age 67.



Closeup of his grip while carving.



He makes cricket bands of twigs and wood scraps to sell to tourists.



Closeup of his cricket musician.

## Upcoming Classes

We have some excellent opportunities for you to learn from premier turners from all over the world. All these classes have limited spots, so be sure to sign up early. Contact Andy Zartman at 303-859-0724 or via email: [AWZartman@comcast.net](mailto:AWZartman@comcast.net) to reserve a spot.

### July 9, Sunday, Chris Stott

Chris Stott, author of *Turned Boxes: 50 Designs*, will be holding a full-day, hands-on class from 9:00 am to 4:00 pm at Rockler. Chris has traveled all the way from England. Check out his web site at [www.cstott.fslife.co.uk](http://www.cstott.fslife.co.uk). Cost and topic of the class will be published in the next newsletter.

### July 16, Sunday, Soren Berger

Soren Berger will be hosting two demos, 10:00 am – 1:00 pm and 2:00 – 5:00 pm at Rockler. Cost will be \$5 for FRW members and \$15 for non-members with all proceeds going to the Scholarship Fund. Soren has traveled from New Zealand who gives excellent demonstrations. Don't miss this opportunity.

If you would like to donate materials for his demo, he has made the following requests:

Dry Maple similar, can be fancy:

1 ea. 2" x 2" x 8" long

1 ea. 1" x 2" x 8" long

3 ea. 3" x 3" x 6" long

1 ea. 4" x 4" x 8" long

1 ea. 3" x 3" x 8" long

1 ea. 3" x 3" x 6" long

Fresh cut wet Maple, Cherry, Madrone or similar hard wood

1 ea. 4" x 4" x 3" wet bowl blank

1 ea. 6" x 6" x 4" wet bowl blank

1 ea. 8" x 8" x 6" wet bowl blank

power sander 2" disk, Danish Oil, super glue, water spray bottle and a microwave, nice grinder

### July 17, Monday, Soren Berger

Soren will also be giving a full-day, hands-on class at Rockler from 9:00 am – 4:00 pm. Cost and topic of the class will be published in the next newsletter.

### Sept 21 & 22 (Thursday & Friday) - Stuart Batty

Stuart Batty will be teaching a hands-on class of "Techniques." Stuart is renown for his thin-walled vessels and winged bowls. Cost of class will be published in the next newsletter.

### Sept 23 (Saturday) – Stuart Batty

Stuart will have a full day demonstration 10:00 am to 1:00 pm and 2:00 pm to 5:30 pm at Rockler. Cost is \$5 for FRW members and \$15 for non-members with all procedures going to the Scholarship Fund.

### Sept 24 & 25 (Sunday & Monday) – Stuart Batty

Stuart Batty will be teaching a hands-on class of "Advanced." Students in the "Advanced" class must have taken the "Techniques" class prior at one time or another. Cost will be published in the next newsletter.

# FRONT RANGE WOODTURNERS

---

## *Shop Tour Announcements*

### *July*

Bear and Alisa Limvere will host a shop tour on Saturday, July 22, from 1:00 to 3:00 pm (or later) at their shop at 22625 Cottontail Court, Elbert County (tel-303-648-3414). This is the long-awaited tour to one of the largest and best equipped shops in our club. You will see a large Ron Nichols-modified Denver Ulery lathe with an 80" swing and a 8' bed. In addition, you will see a modified Commet ornamental lathe and a Nova 3000, with a swivel headstock and a 56" bed. This shop has everything including a cyclone dust collector and a unique tract lighting system and more tools too numerous to mention. This is a complete woodworking shop! You really must see it to fully appreciate it. Maybe we could even get to see some of their beautiful wood turnings!! Maps will be available at the meeting on Saturday, July 8 and Sunday, July 15. If you haven't been there before, YOU WILL NEED A MAP!! and you may wish to car pool because it's a number of miles south and east of Castle Rock.

### *August*

Bill Hopper will host his shop tour on Saturday, August 19, from 1:00-3:00 pm. His shop is located at 15451 West 76th Dr. in Arvada. More details in the August newsletter.

### *September*

Roger Holmes will host a shop tour at his shop on September 9th from 1:00-3:00 PM. His shop is located at 1844 W. Plum Cir in Louisville.

More details in the September newsletter.

## *AAW Scam Warning*

The following was received from AAW:

Recently one or more people have received telephone calls to join the AAW or to subscribe to the AW Journal (magazine). Here are the facts:

- The AAW does not do any telemarketing or phone soliciting for membership.
- The AAW does not do any telemarketing or phone soliciting for magazine subscriptions.
- The AAW does not endorse any agents to solicit AAW membership or magazine subscriptions.

Any such telephone call you receive to this effect is a form of "phishing," where an unscrupulous person is trying to get your credit card or other personal information for their illegal usage. You should not give out your credit card number or personal information as a general policy unless you initiate the phone call to a known business.

Thanks,

John Hill - Chairman AAW  
Chapters and Membership  
Committee

828-645-6633

johnrhill@charter.net

## *Perpetual Turning Project*

Bear Limvere brought

The concept is for the first cycle, a member makes a turning and donates it the club. The turning is the first item in the next month's

raffle. The member who wins the turning must bring another turning to the next month's meeting. Repeat. It's an excellent chance for members to gain pieces made by other members. The turning can be as plain or fancy as you want. Beginners can participate just as much as advanced turners. If the member doesn't want to make a turning, he/she can choose just the wood, and the next winner can take the turning.

## *Applications for Demonstrators*

AAW is also asking for applications for demonstrators to the 2007 Woodturners Symposium. Contact them at [inquiries@woodturner.org](mailto:inquiries@woodturner.org) or at 651-484-9094.

## *Bulk Orders*

Dave Hawley will be accepting orders for Woodline, Craft Supplies, and Cutting Edge Tools at the June meeting. In addition, Craft Supplies has made the offer to donate \$2 to FRW for every member who signs up on their mailing list.

As always, check with Dave Hawley at each meeting if you have placed an order with him or if you want to get in on one of the bulk orders that he organizes. You can also call him at 303-443-2332 if you have questions or orders.

All bulk orders depend on making minimum amounts to get the discounts. Again and as always, thanks, Dave, for working so hard to save us all some money.

## *Mentoring Classes*

Mentoring classes have been cancelled until further notice due to a loss in Phil Houck's family.



# FRONT RANGE WOODTURNERS

---

## ***RMW Invitation***

The Rocky Mountain Woodturners have an open invitation to their monthly meeting. They meet on the first Thursday after our meeting at Colorado State University, Fort Collins, in the Industrial Sciences building, Room 105, at 7:00 pm. Their website is [www.rmwt.org](http://www.rmwt.org).

## ***Volunteers Needed***

We need volunteers who can show up at 5:00 pm at Rockler before each meeting to brew coffee and setup. Please contact Ron Bentall or just appear. We'll put you to work.

## ***Woodcraft Turning Demos***

Pete Holtus does demos every Thursday, 6:30-8:30 pm at Woodcraft, 4403 Tamarac Parkway, Denver. Contact Pete at 303-364-5365 for more information.

## ***Club Library***

### ***Suggested Items***

Contact Jim Applegate for suggestions about materials (books, videos, DVDs) to be added to our club library. The club does have a budget to purchase library materials and look to you to tell us what you want.

Of course, if you want to make donations to the library, all donations are gratefully accepted.

## ***Featured Providers***

**Rocklers**, Colorado Blvd, Denver, provides a 10% discount for club members – see the Rockler section on page 9. Rockler will be keeping the cash register open until the end of the meeting. Try to do your shopping

before the end of the break, so that they can get out quickly after the end of the meeting.

**Guiry's Wallpaper and Art Supplies** - All six Guiry's locations are providing to members of Front Range Woodturners discounts on most everything in the store. Give the contractor account number of 7837 and name of "Front Range Woodturners" to the Guiry's cashier to get your discount.

**Wood Emporium**, Loveland, provides a 10% discount for FRW members.

**Klingspor Catalog Orders:** Members who signed up can get their 10% discounts by letting them know you're on the FRW member list. Second, if you order on-line, first send an email to [sales@woodworkingshop.com](mailto:sales@woodworkingshop.com) with your username (format is first name + last initial - i.e., John Smith would be "johns"), billing address, phone # and preferred password. You will receive a confirmation email within 2 business days. Members can be removed from this email list upon request. You can contact Dave Hawley at [davedorothy@comcast.net](mailto:davedorothy@comcast.net) or at 1516 Lodge Court, Boulder, 80303.

Craft Supplies offers monthly deals with special discount codes that expire monthly. Discounts and codes will be announced at each FRW meeting.

## ***Wood Events***

We receive notices of events, classes, or seminars that we think you may find interesting. (Note: FRW is not endorsing these events, but only providing the information for your convenience.)

### ***Black Forest Woodturning Classes***

Featured turners include Richard Raffan (possibly last class before retirement) and many other international turners.

Workshops are held at the:  
Black Forest Wood Co.  
Bay 7, 603-77th Ave. SE  
Calgary, Alberta, Canada, T2H

2B9

Contact them for more information at phone: 403 255-6044, toll free in Canada and US 1-877-686-06061

For workshop updates and other woodworking workshops visit [www.blackforestwood.com](http://www.blackforestwood.com).

## ***Cindy Drozda Classes***

Cindy Drozda will be holding classes monthly at Rockler Woodworking and Hardware in Denver from 9am to 4pm. Cost is \$135 including materials. To reserve your place, contact Rockler at 303-782-0588, or [www.rockler.com](http://www.rockler.com). Visit her website at [www.cindydrozda.com](http://www.cindydrozda.com).

Class schedule:

Saturday July 15th, 2006 – Banksia Pod Box – Intermediate level

Saturday August 5th, 2006 - Finial Box – Cindy's signature piece! Intermediate level

Saturday September 9th, 2006 – Hollow Vessels - Intermediate level

Saturday October 7th, 2006 - Basic Box Class –Beginner level: make your first box

Saturday November 11th, 2006 – Lidded Hollow Vessel with Finial – Advanced level

## ***Rocky Mount School of Woodturning***

Provides Basic, Intermediate, Advanced, and Specialty classes in woodturning. Full facilities. Contact Lee Carter at Rocky Mountain School of Woodturning, 4625 Kiva Drive, La Porte, CO 80535. Phone: 970-221-4382. Email: [LLJTC4X4149@CS.COM](mailto:LLJTC4X4149@CS.COM).

# FRONT RANGE WOODTURNERS

## Materials Suppliers

### Wood Suppliers

Following is a list of wood suppliers in the Colorado area. If you have more, contact Steve. (Note: FRW is not endorsing these suppliers, but only providing the list for your convenience.)

Rockler Woodworking and Hardware, 2553 S. Colorado Blvd., #108, Denver CO 80222, 303-782-0588, web [www.rockler.com](http://www.rockler.com).

Consolidated Hardwoods, Inc., 11850 Vance, Broomfield, CO 80020, phone 303-466-1839, fax 303-469-3580.

Swingle Tree Co., 8585 E. Warren Ave., Denver, CO 80231, phone 303-337-6200 or 303-369-2892.

Centennial Wood Co, Inc., 985 S. Logan St., Denver, CO 80209, phone 303-778-6209.

Austin Hardwoods of Denver, Inc., 975 W. Mississippi Ave., 80223, phone 303-733-1292 or 303-722-1007, web [www.austinhardwoods.com](http://www.austinhardwoods.com).

Colorado Tree and Shrubbery Specialists, Inc., 4760 Parfet St., Wheatridge, CO 80033, phone 303-431-4155.

Paxton Wood Source, 4837 Jackson St., Denver, CO 80213, phone 303-399-6047, web [www.paxtonwood.com](http://www.paxtonwood.com).

Custom Hardwoods, phone 303-280-6381, affiliated with Tech Western Warehouse, 4520 Indiana St., Golden CO 80403, contact Steve Bell phone 303-902-3115, 303-278-6882, or 303-452-9180.

Woodcraft Supply Corp., 4403 S. Tamarac Parkway, Denver, CO 80237, phone 303-290-0007.

Woodcraft Unlimited, Inc., 2301 S. Delaware St., Denver CO 80223, phone 303-778-9103.

Diverse Hardwoods, 617 1<sup>st</sup> Ave., Longmont, CO 80501, phone 303-651-1020.

TC Woods in Lafayette has local woods and walnut in stock. They also have a bandsaw mill to convert logs

into lumber. Contact them at 303-666-8989.

Dennis Lacen has various woods from the Midwest. Contact him at 9477 Highway 85, Fort Lupton, CO, 303-594-7885.

Manzanita Burl from Mt. Lassen, CA. Crimson and gold grained. 20% discount to Woodclub members. Contact [jackburl96001@yahoo.com](mailto:jackburl96001@yahoo.com) for more information.

Fresh cut Norfolk Island Pine in log form in many sizes; Spalted Citrus, Bay Laurel, Red Cedar and Florida grown Mahogany. 10% discount to club members. Shipped as individual pieces via UPS or USPS, or in larger amounts via a commercial trucking company. Contact Joe Schneider at [jschneider1@cfl.rr.com](mailto:jschneider1@cfl.rr.com).

### Tool and Steel Suppliers

Victor Machinery Exchange, Inc. 251 Centre Street New York, NY 10013 Phone: 800-723-5359 <http://www.victornet.com>

MSC Industrial Supply 6100 Stapleton Drive, South Unit A Denver, CO 80216 Local (303) 935-2022 or (800) 332-0210 Fax: (303) 937-1228 Email: [branchden@mscdirect.com](mailto:branchden@mscdirect.com) Web: [www.mscdirect.com](http://www.mscdirect.com)

DoAll Industrial Supply custom bandsaws 2955 S. Tejon St. Englewood, CO 80110 Phone: 800-92-DOALL Web: [www.doall.com](http://www.doall.com)

Lab Metal (metal putty for "enhancing" cracks) Alvin Products 350 Merrimack St. Lawrence, MA 01843 Phone: 978-975-4580 Web: [www.alvinproducts.com](http://www.alvinproducts.com)

(Note: FRW is not endorsing these suppliers, but only providing the information for your convenience.)

## Misc. Suppliers

Brandon Mackie has a source of filters for those of you who want to create or maintain filtration in your shop. Contact him at the next meeting or at [latherunner@hotmail.com](mailto:latherunner@hotmail.com).

Sanding disks - Steve Worcester in Texas ([www.turningwood.com](http://www.turningwood.com) or 972-424-7958)

## Miscellaneous

### Courtesy During Meetings

We have been requested to please stay seated and quiet during the meeting and demonstration as a courtesy to our demonstrators and fellow members. You feel the need for conversation during the meeting or demonstration, please feel free to step out into the Rockler store.

Also, we must make sure to return promptly after the break to make sure we don't lose time for our demonstrator.

### Contacting the Editor

Due to the hundreds of spam emails that Alisa receives every day, she has requested that if you want to contact her via email, be sure to include "FRW" in the subject line. This will help her not miss your email or accidentally delete it when she is clearing the garbage from her inbox. Her email address is [alisalimvere@yahoo.com](mailto:alisalimvere@yahoo.com).

### Problems Receiving Emailed Newsletter?

Unfortunately, many email providers are automatically filtering attachments or entire emails because of the proliferation of viruses and spam. If you have signed up for an emailed newsletter, but haven't been receiving it lately, try the following:

- Confirm that your email inbox isn't full. Many email providers will automatically deny emails without

# FRONT RANGE WOODTURNERS

telling you if you've used up your space allotment.

- Check with your email provider to see if they are filtering your email without you knowing.
- If your email provider allows you, add the following email addresses to your "Always Allow" or "Do Not Filter" list:

[alisalimvere@yahoo.com](mailto:alisalimvere@yahoo.com)  
[alimvere@mxlogic.com](mailto:alimvere@mxlogic.com)  
[matotanka@yahoo.com](mailto:matotanka@yahoo.com)

You may receive the newsletter from any of these addresses.

- Confirm with Alisa (newsletter editor) that your email address is correct.

It's worth setting up to receive the newsletter by email. It saves paper, postage, and you get to see the photos in full color.

If all else fails, you can tell Alisa to send you the newsletter in hardcopy via USPS.

## Shop Tours

Phil Houck has the sign-up sheet for those interested in giving a tour or going on a tour. Just remember – no one expects a sparkling clean shop, so don't worry about putting it off because you don't have time to tidy up. ❖

## Show and Tell

The turning challenge for June was a Weissflog-style spider box. Jim Gennack won with his maple and padauck spider box.



Bear Limvere – Hollow form of elm with inlaid tree of brass shavings and moon of turquoise.



Pete Holtus – Lidded box of buckeye burl.



Bruce Perry – Lidded form of aspen.



Bruce Perry – Lidded form of aspen.



Bruce Perry – Lidded box.



Bruce Perry – Spider box with spider, in walnut and maple.



Pete Holtus – Lidded box of buckeye burl.



Pete Holtus – Natural-edged bowl of elm.



Sandra Perry – Bowl of walnut. (Her first bowl. Congratulations, Sandra!)



Steve Claycomb – Lidded box in alder, holding his tap tools for threading.





# FRONT RANGE WOODTURNERS



Roger Holmes – Bowl in apple.



Steve Claycomb – Goblets with captured rings in walnut.



Jill Rice – Bowl of walnut flame burl.



Gene Wentworth – Vase in dyed maple.



Roger Holmes – Bowl in apple.



Gene Wentworth – Large bowl with carved rim in walnut.



Gene Wentworth – Closeup of “pretty bottom.”



Jim Gennack – Segmented hollow form in maple and padauk.



Jim Gennack – Spider box in maple and padauk. Winner of the Turning Challenge.



Less Hess – Two views of segmented spider box in maple and walnut.



Less Hess – Spider box in maple and walnut.



R. Lowery – Large bowl in spalted cottonwood.



Curt Vogt – Bowl in cottonwood. (First bowl. Congratulations, Curt!)



Bear Limvere – Myrtle bowl. Donated to the Perpetual Turning project.

# FRONT RANGE WOODTURNERS



Tom Zanetti – Large segmented gear piece in piñon pine.



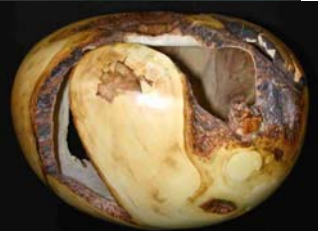
Ron Ainge – Gumball dispenser in beetle-killed pine. ❖

## *Demonstrations*

Doug Schneider demonstrated “Turning more Air Than Wood.”



Mr. Schneider himself. Following are samples of his work.



The rough blank is mounted between centers to allow for adjusting the axis. The top is mounted towards the headstock to keep from tearing it out.



Rounding the outside.



# FRONT RANGE WOODTURNERS



Turning the outside shape. Doug prefers the "air" openings in the top half of the shape. Quote from Jacques Vessery: "Just because the wood is a certain size, doesn't mean you have to use all of it." Sometimes it's better to sacrifice size (volume) to get a good shape.



Piece is reversed and the inside is being shaped.



Hollowing the inside.



He uses the shrink-wrap packaging to stabilize the piece. For fragile pieces, can reinforce with strapping tape. Masking tape is not strong enough.

Doug doesn't try to sand the inside. He finishes with gel varnish or wipe-on polyurethane. ❖

## Rockler

Patronizing their store is the best "thank you" we can give Rockler for their generosity in letting us use their facilities for our ever-growing membership. Keep in mind that they keep the register open late on meeting nights just for us. Just be sure to complete any purchases no later than the mid-meeting break so these poor guys can start shutting down and go home.

As always – all FRW members get 10% off all items, except electrical or sale items, all the time. Just present your FRW membership card at time of purchase. (Note: This offer is only good at the Denver retail location, and is not valid for any other location or for Internet purchases.)

If you have suggestions for tools or materials that Rockler can carry, contact Rich Johnson, manager of the Denver store. Rockler web site: [www.rockler.com](http://www.rockler.com).

## Web Stuff

The Front Range WoodTurners Web site address:

[www.frontrangewoodturners.com](http://www.frontrangewoodturners.com)

Get the latest information about upcoming events, meetings, and view the excellent photos of the show and tell gallery.

Other sites of interest:

(Rky Mtn Woodturners, Ft Collins)  
[www.verinet.com/~drmelli/rmwt.html](http://www.verinet.com/~drmelli/rmwt.html)  
[www.lathes.co.uk](http://www.lathes.co.uk)  
[www.woodworkingbasics.com](http://www.woodworkingbasics.com)  
[www.treelineusa.com](http://www.treelineusa.com)  
[www.woodturnerscatalog.com](http://www.woodturnerscatalog.com)  
[www.kestrelcreek.com](http://www.kestrelcreek.com)  
[www.choicewoods.com](http://www.choicewoods.com)  
[www.woodturner.com](http://www.woodturner.com)  
[www.woodturningonline.com](http://www.woodturningonline.com)  
[www.kazistudio.com](http://www.kazistudio.com) ❖

## Classifieds

*Please note:* All advertising in the Classifieds is free, but please be sure to notify the newsletter editor if an item is no longer for sale.

*Ad Policy* – All ads that are older than 3 months will be deleted, unless you contact the newsletter editor.

**For Sale** – Legacy ornamental mill machine 40" long. 0.25x and 2x gear sets. Floor stand, dust control, rotary table router and bits. \$1,500. Contact Robin Luther, 303-617-8492. ❖

# FRONT RANGE WOODTURNERS

## Club Information

*President:* Tom Wirsing  
phone: 303-7179427  
e-mail:  
tom.wirsing@mesanetworks.net

*Vice President/Program Director/Videographer:* Andy Zartman  
phone: 303-859-0724  
email: AWZartman@comcast.net

*Treasurer:* Jill Rice  
phone: 303-838-2452  
email: tree2bowl@yahoo.com

*Secretary & Newsletter Editor:* Alisa Limvere

phone: 303-648-3414  
e-mail: alisalimvere@yahoo.com  
Deadline for submitting material for inclusion in the newsletter is 15 days before the next meeting.

*Membership & Publicity Chairman:* Bear Limvere  
phone: 303-648-3414  
e-mail: Bear@BearLimvere.com

*Librarian:* Jim Applegate  
*Raffle-Wood Director:* Steve Claycomb  
*Group Buy Coordinator:* Dave Hawley  
phone: 303-443-2332  
email: dave\_hawley@comcast.net  
*Shop Tour & Mentor Program Chairman:* Phil Houck  
phone: 303-985-4692

*Internet Chairman:* Brandon Mackie  
email: latherunner@hotmail.com.

*Social Chairperson:* Rose Phillips  
home phone: 303-740-9663 and enter 6014 during the message  
work, 303-715-0172

## General Meeting Information

Normal meetings are the first Tuesday of every month, unless otherwise rescheduled.

Meeting place is at Rockler Woodworking & Hardware, 2553 So. Colorado Blvd. #108 Denver, CO (west side of Colorado Blvd. opposite the mall).

Meetings are 6:30 PM - 9:00 PM.



# FRONT RANGE WOODTURNERS

July, 2006, Volume 6 - Number 07

Front Range WoodTurners  
P.O. Box 714  
Franktown, CO 80116