



# FRONT RANGE WOODTURNERS

April, 2006, Volume 6 - Number 04

## Inside this Issue

<b>Upcoming Events</b> .....	1
<b>News</b> .....	1
Roster.....	1
New Lathe.....	1
Shop Tour Announcements...	1
Mentoring Classes.....	1
AAW Membership.....	1
Meeting Format.....	1
RMW Invitation.....	2
Volunteers Needed.....	2
Woodcraft Turning Demos.....	2
Bulk Orders.....	2
Club Library.....	2
Featured Providers.....	2
Wood Events.....	2
Materials Suppliers.....	2
Miscellaneous.....	3
<b>Show and Tell</b> .....	4
<b>Demonstrations</b> .....	6
<b>Rockler</b> .....	7
<b>Web Stuff</b> .....	8
<b>Classifieds</b> .....	8
<b>Club Information</b> .....	8
General Meeting Information .	8

## Upcoming Events

**Important Note:** Even though a turning challenge is announced for a meeting, this does not mean that other items can't be brought for the show & tell. Feel free to bring in what you've created and don't feel you have to be a master turner to show off your work.

**April** – Tuesday, April 4. Brandon Mackie will be demonstrating "Log to Bowl." Turning challenge: Platters.

**June** – Tuesday, June 6. Doug Schneider will be demonstrating "Turning More Air than Wood."

**July** – Date TBD (not July 4). Chris Stott will be doing a full-day demo, topic to be announced.

**August** – Tuesday, August 1. Stuart Batty will be doing a full-day demo, topic to be announced. ❖

## News

### Roster

The 2006 membership roster is attached. This roster is provided to FRW members *only* and is intended to assist you in contacting co-members.

Please be aware that the information in this roster is confidential and proprietary, and is *not* to be used for any other purpose, including and especially marketing or mass email purposes. The only exception to the above rule is that the roster is provided to the Woodworker's Show so that they can notify members of the upcoming event in November.

Any members joining after the end of March can receive a copy of the roster upon request, but will not be included in the 2006 roster.

### New Lathe

We have a new member of the family; a Powermatic demonstration lathe. It was voted and approved at the March meeting by the FRW members to purchase the Powermatic lathe at a very good discount from Rockler.

Thanks again, Rockler, for your generous support to our club!

## Shop Tour Announcements

### April

Les Stern will host a shop tour at his home on Saturday, April 22, from 1:00-3:00 pm at his home at 3722 S. Grape, Denver. More info will be provided next month.

### Mentoring Classes

Mentoring classes are usually scheduled for the second and fourth Monday of each month at Rockler. Contact Phil Houck at 303-985-4692 for specific information. Mentoring classes are a benefit for members to get hands-on practice at the lathe.

### AAW Membership

FRW is a chapter of the American Association of Woodturners (AAW). AAW is the national organization dedicated to furthering woodturning. All FRW members are encouraged to also become AAW members as well. You will get discounts for AAW events (see Wood Events on page 2), a quarterly magazine, and lots of other benefits. Support our parent organization by signing up to be an AAW member. See their website at [www.woodturner.org](http://www.woodturner.org).

### Meeting Format

Tom Wirsing is welcoming suggestions from members on how

# FRONT RANGE WOODTURNERS

---

to improve the meeting formats. We do a lot in a single night – raffle, show and tell, news, and demo – and Tom wants to make sure that we fulfill the needs of the club. Please contact Tom at the March meeting with your suggestions or email him at [fronrangewoodturners@mesanetwork.com](mailto:fronrangewoodturners@mesanetwork.com).

## ***RMW Invitation***

The Rocky Mountain Woodturners have an open invitation to their monthly meeting. They meet on the first Thursday after our meeting at Colorado State University, Fort Collins, in the Industrial Sciences building, Room 105, at 7:00 pm. Their website is [www.rmwt.org](http://www.rmwt.org).

## ***Volunteers Needed***

We need volunteers who can show up at 5:00 pm at Rockler before each meeting to brew coffee and setup. Please contact Ron Bentall or just appear. We'll put you to work.

## ***Woodcraft Turning***

### ***Demos***

Pete Holtus does demos every Thursday, 6:30-8:30 pm at Woodcraft, 4403 Tamarac Parkway, Denver. Contact Pete at 303-364-5365 for more information.

## ***Bulk Orders***

Dave Hawley will be taking orders for Craft Supplies and Cutting Edge Tools at the March meeting.

As always, check with Dave Hawley at each meeting if you have placed an order with him or if you want to get in on one of the bulk orders that he organizes. You can also call him at 303-443-2332 if you have questions or orders.

All bulk orders depend on making minimum amounts to get the discounts. Again and as always, thanks, Dave, for working so hard to save us all some money.

## ***Club Library***

### ***Suggested Items***

Contact Jim Applegate for suggestions about materials (books, videos, DVDs) to be added to our club library. The club does have a budget to purchase library materials and look to you to tell us what you want.

Of course, if you want to make donations to the library, all donations are gratefully accepted.

## ***Featured Providers***

**Rocklers**, Colorado Blvd, Denver, provides a 10% discount for club members – see the Rockler section on page 7. Rockler will be keeping the cash register open until the end of the meeting. Try to do your shopping before the end of the break, so that they can get out quickly after the end of the meeting.

**Guiry's Wallpaper and Art Supplies** - All six Guiry's locations are providing to members of Front Range Woodturners discounts on most everything in the store. Give the contractor account number of 7837 and name of "Front Range Woodturners" to the Guiry's cashier to get your discount.

**Wood Emporium**, Loveland, provides a 10% discount for FRW members.

**Klingspor Catalog Orders**: Members who signed up can get their 10% discounts by letting them know you're on the FRW member list. Second, if you order on-line, first send an email to [sales@woodworkingshop.com](mailto:sales@woodworkingshop.com) with your username (format is first name + last initial - i.e., John Smith would be "johns"), billing address, phone # and preferred password. You will receive a confirmation email within 2 business days. Members can be removed from

this email list upon request. You can contact Dave Hawley at [davedorothy@comcast.net](mailto:davedorothy@comcast.net) or at 1516 Lodge Court, Boulder, 80303.

Craft Supplies offers monthly deals with special discount codes that expire monthly. Discounts and codes will be announced at each FRW meeting.

## ***Wood Events***

We receive notices of events, classes, or seminars that we think you may find interesting. (Note: FRW is not endorsing these events, but only providing the information for your convenience.)

## ***Rocky Mount School of Woodturning***

Provides Basic, Intermediate, Advanced, and Specialty classes in woodturning. Full facilities. Contact Lee Carter at Rocky Mountain School of Woodturning, 4625 Kiva Drive, La Porte, CO 80535. Phone: 970-221-4382. Email: [LLJTC4X4149@CS.COM](mailto:LLJTC4X4149@CS.COM).

## ***AAW 2006 Symposium***

The American Association of Woodturners Symposium is scheduled for June 22-24, 2006, in Louisville, KY. AAW members pay \$245, non-members pay \$275 if you register before May 15, Raffle will include multiple lathes, tools, faceplates, and other wonderful items. See their website at <http://www.woodturner.org/sym/sym2006/> or call them at 651-484-9094 for more details.

## ***Materials Suppliers***

### ***Wood Suppliers***

Following is a list of wood suppliers in the Colorado area. If you have more, contact Steve. (Note: FRW is not endorsing these suppliers, but only providing the list for your convenience.)

# FRONT RANGE WOODTURNERS

---

Rockler Woodworking and Hardware,  
2553 S. Colorado Blvd., #108, Denver  
CO 80222, 303-782-0588, web  
[www.rockler.com](http://www.rockler.com).

Consolidated Hardwoods, Inc., 11850  
Vance, Broomfield, CO 80020, phone  
303-466-1839, fax 303-469-3580.

Swingle Tree Co., 8585 E. Warren  
Ave., Denver, CO 80231, phone 303-  
337-6200 or 303-369-2892.

Centennial Wood Co, Inc., 985 S.  
Logan St., Denver, CO 80209, phone  
303-778-6209.

Austin Hardwoods of Denver, Inc., 975  
W. Mississippi Ave., 80223, phone  
303-733-1292 or 303-722-1007, web  
[www.austinhardwoods.com](http://www.austinhardwoods.com).

Colorado Tree and Shrubbery  
Specialists, Inc., 4760 Parfet St.,  
Wheatridge, CO 80033, phone 303-  
431-4155.

Paxton Wood Source, 4837 Jackson  
St., Denver, CO 80213, phone 303-  
399-6047, web [www.paxtonwood.com](http://www.paxtonwood.com).

Custom Hardwoods, phone 303-280-  
6381, affiliated with Tech Western  
Warehouse, 4520 Indiana St., Golden  
CO 80403, contact Steve Bell phone  
303-902-3115, 303-278-6882, or 303-  
452-9180.

Woodcraft Supply Corp., 4403 S.  
Tamarac Parkway, Denver, CO 80237,  
phone 303-290-0007.

Woodcraft Unlimited, Inc., 2301 S.  
Delaware St., Denver CO 80223,  
phone 303-778-9103.

Diverse Hardwoods, 617 1<sup>st</sup> Ave.,  
Longmont, CO 80501, phone 303-651-  
1020.

TC Woods in Lafayette has local  
woods and walnut in stock. They also  
have a bandsaw mill to convert logs  
into lumber. Contact them at 303-666-  
8989.

Dennis Lacen has various woods from  
the Midwest. Contact him at 9477  
Highway 85, Fort Lupton, CO, 303-  
594-7885.

Manzanita Burl from Mt. Lassen, CA.  
Crimson and gold grained. 20%  
discount to Woodclub members.  
Contact [jackburl96001@yahoo.com](mailto:jackburl96001@yahoo.com) for  
more information.

Fresh cut Norfolk Island Pine in log  
form in many sizes; Spalted Citrus,  
Bay Laurel, Red Cedar and Florida  
grown Mahogany. 10% discount to  
club members. Shipped as individual  
pieces via UPS or USPS, or in larger  
amounts via a commercial trucking  
company. Contact Joe Schneider at  
jschneider1@cfl.rr.com.

## ***Tool and Steel Suppliers***

Victor Machinery Exchange, Inc.  
251 Centre Street  
New York, NY 10013  
Phone: 800-723-5359  
<http://www.victornet.com>

MSC Industrial Supply  
6100 Stapleton Drive, South  
Unit A  
Denver, CO 80216  
Local (303) 935-2022  
or (800) 332-0210  
Fax: (303) 937-1228  
Email: [branchden@mscdirect.com](mailto:branchden@mscdirect.com)  
Web: [www.mscdirect.com](http://www.mscdirect.com)

DoAll Industrial Supply  
custom bandsaws  
2955 S. Tejon St.  
Englewood, CO 80110  
Phone: 800-92-DOALL  
Web: [www.doall.com](http://www.doall.com)

Lab Metal (metal putty for "enhancing"  
cracks)  
Alvin Products  
350 Merrimack St.  
Lawrence, MA 01843  
Phone: 978-975-4580  
Web: [www.alvinproducts.com](http://www.alvinproducts.com)

(Note: FRW is not endorsing these  
suppliers, but only providing the  
information for your convenience.)

## ***Misc. Suppliers***

Brandon Mackie has a source of filters  
for those of you who want to create or  
maintain filtration in your shop. Contact  
him at the next meeting or at  
[latherunner@hotmail.com](mailto:latherunner@hotmail.com).

Sanding disks - Steve Worcester in  
Texas ([www.turningwood.com](http://www.turningwood.com) or 972-  
424-7958)

## ***Miscellaneous***

### ***Courtesy During Meetings***

We have been requested to please  
stay seated and quiet during the  
meeting and demonstration as a  
courtesy to our demonstrators and  
fellow members. You feel the need  
for conversation during the  
meeting or demonstration, please  
feel free to step out into the  
Rockler store.

Also, we must make sure to return  
promptly after the break to make  
sure we don't lose time for our  
demonstrator.

### ***Contacting the Editor***

Due to the hundreds of spam  
emails that Alisa receives every  
day, she has requested that if you  
want to contact her via email, be  
sure to include "FRW" in the  
subject line. This will help her not  
miss your email or accidentally  
delete it when she is clearing the  
garbage from her inbox. Her email  
address is  
[alisalimvere@yahoo.com](mailto:alisalimvere@yahoo.com).

### ***Problems Receiving Emailed Newsletter?***

Unfortunately, many email  
providers are automatically filtering  
attachments or entire emails  
because of the proliferation of  
viruses and spam. If you have  
signed up for an emailed  
newsletter, but haven't been  
receiving it lately, try the following:

- Confirm that your email inbox  
isn't full. Many email providers  
will automatically deny emails  
without telling you if you've  
used up your space allotment.
- Check with your email provider  
to see if they are filtering your  
email without you knowing.
- If your email provider allows  
you, add the following email



# FRONT RANGE WOODTURNERS

addresses to your "Always Allow" or "Do Not Filter" list:

[alisalimvere@yahoo.com](mailto:alisalimvere@yahoo.com)  
[alimvere@mxlogic.com](mailto:alimvere@mxlogic.com)  
[matotanka@yahoo.com](mailto:matotanka@yahoo.com)

You may receive the newsletter from any of these addresses.

- Confirm with Alisa (newsletter editor) that your email address is correct.

It's worth setting up to receive the newsletter by email. It saves paper, postage, and you get to see the photos in full color.

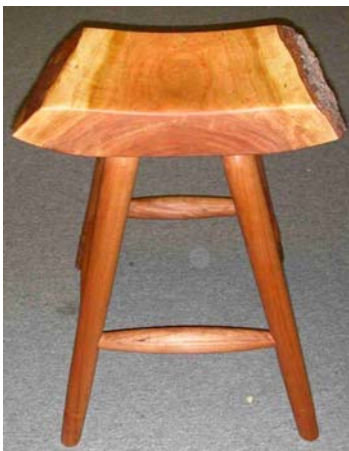
If all else fails, you can tell Alisa to send you the newsletter in hardcopy via USPS.

## Shop Tours

Phil Houck has the sign-up sheet for those interested in giving a tour or going on a tour. Just remember – no one expects a sparkling clean shop, so don't worry about putting it off because you don't have time to tidy up. ❖

## Show and Tell

The turning challenge for March was a rustic stool. Megan Caine won with her beautiful entry.



Megan Caine – Turned stool.  
Winner of the March challenge!



Steve Claycomb – Triple candlestick in cedar.



Bruce Perry – Finial-lidded box in burl.



Bruce Perry - Tulip vase in aspen.



Rick Fleming – Small hollow form in elm.



Bruce Perry – Finial-lidded box titled "Muted Music". Donated to the Channel 6 Auction.



Bear Limvere – Hollow form in aspen.

# FRONT RANGE WOODTURNERS



Mike Marek – Tall vase in aspen.



Grover Brown – Four finial-lidded boxes.

Steve DeJong – Square-edge compote in walnut.



Phil Houck – Natural-edge vase in apricot.



Ron & Betty Ainge – Bowl with floral pyrography in basswood.



Marti Norberg – Magic Wand (with spell).



Phil Houck – Natural-edge vase in post-oak.



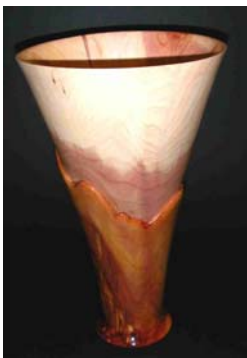
Paul Stafford – Zippered petal bowl in maple.



Fred Meyer – Ornament with crystal inlay. Donated to the Channel 6 Auction.



John Betts – Fly reel in mahogany, brass, and ebony.



Barbara Craig – Tall carved vase in juniper.



Phil Houck – Natural-edge bowl in persimmon.



# FRONT RANGE WOODTURNERS



Jerry Smith – Pair of glass-lined segmented vases in dyed ash.



Pete Holtus – Three multi-sided twisted boxes.



Pete Holtus – Two multi-sided boxes. ❖

## Demonstrations

Mike Mahoney demonstrated using the Kelton Bowl Saver system to turn multiple bowl blanks and then turned a platter.



Mr Mahoney.



Turning the outside of the wet blank using a 3/4" gouge with a fingernail bevel. Notice the shavings flying off.



Making sure the outside is the appropriate shape.



Discussing shape.



Bowl has been reversed. Grooves are cut with a gouge to start the bowl saving process. Grooves are

spaced approximately 10% of the finished bowl wall diameter.



Mike rough hollows the inner-most circle so that it will dry evenly.



More flying shavings.



The Kelton Bowl Saver system in place. The base is in the toolrest and lined up with the inner-most cut. The tool (shown over the bowl) has been ground with a diamond-shaped bit.

# FRONT RANGE WOODTURNERS



Showing the system in action. The three rods provide leverage as Mike feeds the tool into the wood, following the curve of the tool.



Front view of bowl-saving cut. Using this system, three bowls can be created from a single blank, instead of wasting the interior as shavings.



Turning the inside of the still-wet outer-most shape using a 3/8" gouge. There is a risk of distortion as it dries, but Mike figured that the grain and wall thinness will help to minimize that risk. The spots in the photo are from flying moisture.



Another view of the push cut used to turn the inside of the bowl.



The shavings pile!

Additional notes:

- "Soft" hardwoods have the resilience and flexibility to withstand daily use as utility bowls. Maple, box elder, poplar, and myrtle are good choices.
- Mike roughs out his bowls in winter. It's hard physical work, and winter helps to slow the drying a bit to help prevent cracking.
- After roughing out the bowls, he paints them completely with green wood sealer and stacks them on the floor to dry, rotating occasionally. After about a month, he moves them to shelves for additional air flow. After about 3 months, they are ready to turn.
- The base for utility pieces must be larger than for decorative pieces. Bowls should have bases that are 40-50% of total diameter. Platters should have bases that are 70% of total diameter.

- The insides should be smooth with no abrupt changes. This will make cleaning much easier.
- Mike likes the double-bevel grind on his gouges.
- Utility pieces are sanded to 320 grit, then sprayed with a little water and sanded again.
- Mike prefers no finish, but if a finish is desired, he uses his walnut oil bowl finish. Be sure finish is food-safe and do not use a surface finish for utility bowls (such as shellac or brush-on polyurethane).❖

## Rockler

Patronizing their store is the best "thank you" we can give Rockler for their generosity in letting us use their facilities for our ever-growing membership. Keep in mind that they keep the register open late on meeting nights just for us. Just be sure to complete any purchases no later than the mid-meeting break so these poor guys can start shutting down and go home.

As always – all FRW members get 10% off all items, except electrical or sale items, all the time. Just present your FRW membership card at time of purchase. (Note: This offer is only good at the Denver retail location, and is not valid for any other location or for Internet purchases.)

If you have suggestions for tools or materials that Rockler can carry, contact Rich Johnson, manager of the Denver store. Rockler web site: [www.rockler.com](http://www.rockler.com).

# FRONT RANGE WOODTURNERS

## Web Stuff

The Front Range WoodTurners  
Web site address:

[www.frontrangewoodturners.com](http://www.frontrangewoodturners.com)

Get the latest information about upcoming events, meetings, and view the excellent photos of the show and tell gallery.

Other sites of interest:

(Rky Mtn Woodturners, Ft Collins)  
[www.verinet.com/~drmeli/rmw.html](http://www.verinet.com/~drmeli/rmw.html)  
[www.lathes.co.uk](http://www.lathes.co.uk)  
[www.woodworkingbasics.com](http://www.woodworkingbasics.com)  
[www.treelineusa.com](http://www.treelineusa.com)  
[www.woodturnerscatalog.com](http://www.woodturnerscatalog.com)  
[www.kestrelcreek.com](http://www.kestrelcreek.com)  
[www.choicewoods.com](http://www.choicewoods.com)  
[www.woodturner.com](http://www.woodturner.com)  
[www.woodturningonline.com](http://www.woodturningonline.com)  
[www.kazistudio.com](http://www.kazistudio.com) ❖

## Classifieds

*Please note:* All advertising in the Classifieds is free, but please be sure to notify the newsletter editor if an item is no longer for sale.

*Ad Policy* – All ads that are older than 3 months will be deleted, unless you contact the newsletter editor.

**For Sale** - Scroll Saw. Delta 40-680, 20", 6 speed, w/ stand. NEW still sealed in shipping crate. \$400. (amazon \$479). ALSO Belt Sander Porter-Cable 362VS, 4x24", Variable speed, w/ dust collector bag. NEW, still in box. \$200. (amazon \$239). Contact Richard Kuivila - 303 708-0905.

**For Sale** – Carb-a-tech variable speed mini-lathe, 6" swing, 12" between centers, with Bonnie Klein scroll chuck.

Low use, cabinet, extra fuses. \$200. Contact Dean Morrell at 719-638-1800. Forced to sell to raise money for medical bills for son diagnosed with Multiple Sclerosis.

**For Sale** – Corian. Several colors. Large enough for jigs and fixtures with a few as large as 30"x50". \$5 per sq. ft. Contact Rob Marquese at 303-255-2959.

**For Sale** – Delta 3 Hp Shaper (#43-455). Mobile base, dust port. 2 rail/style bit sets, 5 other cutters. Like new. Contact Don Natale at 303-810-2663. ❖

## Club Information

*President:* Tom Wirsing  
phone: 303-7179427  
e-mail:  
tom.wirsing@mesanetworks.net

*Vice President/Program Director/Videographer* Andy Zartman  
phone: 303-859-0724  
email: AWZartman@comcast.net

*Treasurer:* Jill Rice  
phone: 303-838-2452  
email: tree2bowl@yahoo.com

*Secretary & Newsletter Editor:* Alisa Limvere  
phone: 303-648-3414  
e-mail: alisalimvere@yahoo.com  
Deadline for submitting material for inclusion in the newsletter is 15 days before the next meeting.

*Membership & Publicity Chairman:* Bear Limvere  
phone: 303-648-3414  
e-mail: Bear@BearLimvere.com

*Librarian:* Jim Applegate

*Raffle-Wood Director:* Steve Claycomb

*Group Buy Coordinator:* Dave Hawley  
phone: 303-443-2332  
email: dave\_hawley@comcast.net

*Shop Tour & Mentor Program Chairman:* Phil Houck  
phone: 303-985-4692

*Internet Chairman:* Brandon Mackie  
email: latherunner@hotmail.com.

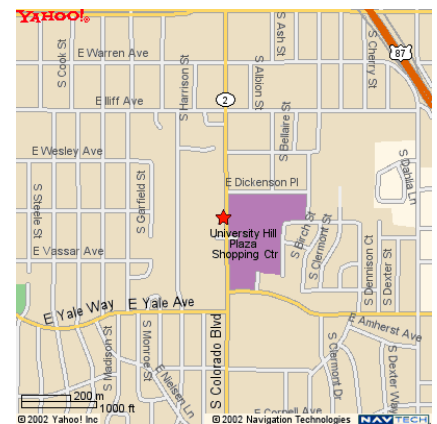
*Social Chairperson:* Rose Phillips  
home phone: 303-740-9663 and enter 6014 during the message work, 303-715-0172

## General Meeting Information

Normal meetings are the first Tuesday of every month, unless otherwise rescheduled.

Meeting place is at Rockler Woodworking & Hardware, 2553 So. Colorado Blvd. #108 Denver, CO (west side of Colorado Blvd. opposite the mall).

Meetings are 6:30 PM - 9:30 PM.







# FRONT RANGE WOODTURNERS

April, 2006, Volume 6 - Number 04

---

Front Range WoodTurners  
P.O. Box 714  
Franktown, CO 80116