



FRONT RANGE WOODTURNERS

December, 2005, Volume 5 - Number 12

Inside this Issue

Upcoming Events	1
News	1
<i>Let's Get this Party Started!</i> ...	1
<i>New Contact Info for</i>	
<i>Newsletter Editor</i>	1
<i>Mentoring Program Volunteer</i>	
<i>Wanted</i>	1
<i>Volunteers Needed</i>	1
<i>Woodcraft Turning Demos</i>	1
<i>Bulk Orders</i>	2
<i>Club Library</i>	2
<i>Featured Providers</i>	2
<i>Wood Events</i>	2
<i>Materials Suppliers</i>	2
<i>Miscellaneous</i>	3
Show and Tell	3
Demonstrations	6
Rockler	8
Web Stuff	8
Classifieds	8
Club Information	9
<i>General Meeting Information</i> .	9

Upcoming Events

Important Note: Even though a turning challenge is announced for a meeting, this does not mean that other items can't be brought for the show & tell. Feel free to bring in what you've created and don't feel you have to be a master turner to show off your work.

November – Tuesday, November 1. Alan Lacer will be demonstrating skew chisel techniques. Turning challenge: cabriolet or 2-axis legs.

December – Tuesday, December 6. Annual FRW Holiday Party – starts at 6:30 pm. No turning challenge or Show & Tell. ❖

News

Let's Get this Party Started!

The FRW Holiday Party will be held at the Grace United Methodist Church on Yale Avenue. Grace is 3 blocks east of I-25 on Yale, on the north side.

The menu will follow last year's, with turkey, ham, mashed potatoes, gravy, rolls, and cranberry sauce. If you want to bring an additional side dish or a dessert (dessert, dessert, GO desserts!!), bring them to the party.

Please RSVP with a count of attendees (member + guest) so that enough food can be prepared. You can call Bear or Alisa Limvere at 303-648-3414 or email Alisa at alisalimvere@yahoo.com. We'll need a final count no later than Wednesday, November 30.

We still need a party organizer that can coordinate all the teams (auction, raffle, dinner, setup, and cleanup). There will be a sign-up sheet to the November meeting for volunteers to help with set-up, cooking and serving, and clean-up.

There will be no turning challenge or Show & Tell for the December meeting. However, we will be having an auction to raise money for FRW, so if you want to donate an item, bring it on the night of the party. We will also have a side table for a swap meet.

Every year it gets more and more fun, so come join us and celebrate!

New Contact Info for Newsletter Editor

Due to her old email server bouncing email without notice, Alisa is asking that you now use the following address to contact her: alisalimvere@yahoo.com.

Mentoring Program Volunteer Wanted

The mentoring program provides hands-on training at the Rockler facility and members' shops, allowing FRW members to learn new techniques, tools, and beginning turning. It's an excellent method to "get your feet dusty."

Due to time constraints, our previous volunteer is unable to support the mentoring program for our club until at least the end of the year. If you are interested in volunteering to hold mentoring sessions, please contact Ron Bentall at the next meeting.

Volunteers Needed

We need volunteers who can show up at 5:00 pm at Rockler before each meeting to brew coffee and setup. Please contact Ron Bentall or just appear. We'll put you to work.

Woodcraft Turning Demos

Pete Holtus does demos every Thursday, 6:30-8:30 pm at Woodcraft, 4403 Tamarac Parkway, Denver. Contact Pete at

FRONT RANGE WOODTURNERS

303-364-5365 for more information.

Bulk Orders

As always, check with Dave Hawley at each meeting if you have placed an order with him or if you want to get in on one of the bulk orders that he organizes. You can also call him at 303-443-2332 if you have questions or orders.

All bulk orders depend on making minimum amounts to get the discounts. Again and as always, thanks, Dave, for working so hard to save us all some money.

Club Library

Suggested Items

Contact Jim Applegate for suggestions about materials (books, videos, DVDs) to be added to our club library. The club does have a budget to purchase library materials and look to you to tell us what you want.

Of course, if you want to make donations to the library, all donations are gratefully accepted.

Featured Providers

Rocklers, Colorado Blvd, Denver, provides a 10% discount for club members – see the Rockler section on page 8. Rockler will be keeping the cash register open until the end of the meeting. Try to do your shopping before the end of the break, so that they can get out quickly after the end of the meeting.

Guiry's Wallpaper and Art Supplies - All six Guiry's locations are providing to members of Front Range Woodturners discounts on most everything in the store. Give the contractor account number of 7837 and name of "Front Range Woodturners" to the Guiry's cashier to get your discount.

Wood Emporium, Loveland, provides a 10% discount for FRW members.

Klingspor Catalog Orders: Members who signed up can get their 10% discounts by letting them know you're on the FRW member list. Second, if you order on-line, first send an email to sales@woodworkingshop.com with your username (format is first name + last initial - i.e., John Smith would be "johns"), billing address, phone # and preferred password. You will receive a confirmation email within 2 business days. Members can be removed from this email list upon request. You can contact Dave Hawley at davedorothy@comcast.net or at 1516 Lodge Court, Boulder, 80303.

Craft Supplies offers monthly deals with special discount codes that expire monthly. Discounts and codes will be announced at each FRW meeting.

Wood Events

We receive notices of events, classes, or seminars that we think you may find interesting. (Note: FRW is not endorsing these events, but only providing the information for your convenience.)

Rocky Mount School of Woodturning

Provides Basic, Intermediate, Advanced, and Specialty classes in woodturning. Full facilities. Contact Lee Carter at Rocky Mountain School of Woodturning, 4625 Kiva Drive, La Porte, CO 80535. Phone: 970-221-4382. Email: LLJTC4X4149@CS.COM.

2006 Desert Woodturning Roundup

The Arizona Woodturners Association is hosting this symposium on Feb. 18-19, 2006. See their website at www.desertwoodturningroundup.com for more details.

Materials Suppliers

Wood Suppliers

Following is a list of wood suppliers in the Colorado area. If you have more, contact Steve. (Note: FRW is not endorsing these suppliers, but only providing the list for your convenience.)

Rockler Woodworking and Hardware, 2553 S. Colorado Blvd., #108, Denver CO 80222, 303-782-0588, web www.rockler.com.

Consolidated Hardwoods, Inc., 11850 Vance, Broomfield, CO 80020, phone 303-466-1839, fax 303-469-3580.

Swingle Tree Co., 8585 E. Warren Ave., Denver, CO 80231, phone 303-337-6200 or 303-369-2892.

Centennial Wood Co, Inc., 985 S. Logan St., Denver, CO 80209, phone 303-778-6209.

Austin Hardwoods of Denver, Inc., 1301 S. Platte River Dr., 80223, phone 303-733-1292 or 303-722-1007, web www.austinhardwoods.com.

Colorado Tree and Shrubbery Specialists, Inc., 4760 Parfet St., Wheatridge, CO 80033, phone 303-431-4155.

Paxton Wood Source, 4837 Jackson St., Denver, CO 80213, phone 303-399-6047, web www.paxtonwood.com.

Custom Hardwoods, phone 303-280-6381, affiliated with Tech Western Warehouse, 4520 Indiana St., Golden CO 80403, contact Steve Bell phone 303-902-3115, 303-278-6882, or 303-452-9180.

Woodcraft Supply Corp., 4403 S. Tamarac Parkway, Denver, CO 80237, phone 303-290-0007.

Woodcraft Unlimited, Inc., 2301 S. Delaware St., Denver CO 80223, phone 303-778-9103.

Diverse Hardwoods, 617 1st Ave., Longmont, CO 80501, phone 303-651-1020.

TC Woods in Lafayette has local woods and walnut in stock. They also have a bandsaw mill to convert logs

FRONT RANGE WOODTURNERS

into lumber. Contact them at 303-666-8989.

West Penn Hardwoods has turning blanks from the Amazon. See their website at www.westpennhardwoodsamazon.com.

Dennis Lacen has various woods from the Midwest. Contact him at 9477 Highway 85, Fort Lupton, CO, 303-594-7885.

Manzanita Burl from Mt. Lassen, CA. Crimson and gold grained. 20% discount to Woodclub members. Contact jackburl96001@yahoo.com for more information.

Fresh cut Norfolk Island Pine in log form in many sizes; Spalted Citrus, Bay Laurel, Red Cedar and Florida grown Mahogany. 10% discount to club members. Shipped as individual pieces via UPS or USPS, or in larger amounts via a commercial trucking company. Contact Joe Schneider at jschneider1@cfl.rr.com.

Tool and Steel Suppliers

Victor Machinery Exchange, Inc.
251 Centre Street
New York, NY 10013
Phone: 800-723-5359
<http://www.victornet.com>

MSC Industrial Supply
6100 Stapleton Drive, South
Unit A
Denver, CO 80216
Local (303) 935-2022
or (800) 332-0210
Fax: (303) 937-1228
Email: branchden@mscdirect.com
Web: www.mscdirect.com

DoAll Industrial Supply
custom bandsaws
2955 S. Tejon St.
Englewood, CO 80110
Phone: 800-92-DOALL
Web: www.doall.com

Lab Metal (metal putty for "enhancing" cracks)
Alvin Products
350 Merrimack St.
Lawrence, MA 01843
Phone: 978-975-4580
Web: www.alvinproducts.com

(Note: FRW is not endorsing these suppliers, but only providing the information for your convenience.)

Misc. Suppliers

Brandon Mackie has a source of filters for those of you who want to create or maintain filtration in your shop. Contact him at the next meeting or at latherunner@hotmail.com.

Sanding disks - Steve Worcester in Texas (www.turningwood.com or 972-424-7958)

Miscellaneous

Courtesy During Meetings

We have been requested to please stay seated and quiet during the meeting and demonstration as a courtesy to our demonstrators and fellow members. You feel the need for conversation during the meeting or demonstration, please feel free to step out into the Rockler store.

Also, we must make sure to return promptly after the break to make sure we don't lose time for our demonstrator.

Contacting the Editor

Due to the hundreds of spam emails that Alisa receives every day, she has requested that if you want to contact her via email, be sure to include "FRW" in the subject line. This will help her not miss your email or accidentally delete it when she is clearing the garbage from her inbox. Her email address is alisalimvere@yahoo.com (new).

Problems Receiving Emailed Newsletter?

Unfortunately, many email providers are automatically filtering attachments or entire emails because of the proliferation of viruses and spam. If you have

signed up for an emailed newsletter, but haven't been receiving it lately, try the following:

- Confirm that your email inbox isn't full. Many email providers will automatically deny emails without telling you if you've used up your space allotment.
- Check with your email provider to see if they are filtering your email without you knowing.
- If your email provider allows you, add the following email addresses to your "Always Allow" or "Do Not Filter" list:

alisalimvere@yahoo.com
Limvere@fgn.net
alimvere@mxlogic.com
matotanka@yahoo.com

You may receive the newsletter from any of these addresses.

- Confirm with Alisa (newsletter editor) that your email address is correct.

It's worth setting up to receive the newsletter by email. It saves paper, postage, and you get to see the photos in full color.

If all else fails, you can tell Alisa to send you the newsletter in hardcopy via USPS.

Shop Tours

Phil Houck has the sign-up sheet for those interested in giving a tour or going on a tour. Just remember – no one expects a sparkling clean shop, so don't worry about putting it off because you don't have time to tidy up. ❖

Show and Tell

The turning challenge was two-axis table legs. Bruce Perry won with his "Queen Latifah" small table.

FRONT RANGE WOODTURNERS

BTW – Richard Myers was the winner of the October challenge.



Bruce Perry – “Queen Latifah” non-cabriole leg table. Winner of the November challenge!



Bruce Perry – Sumac miniature lidded box (from Oct. meeting).



Bruce Perry - Lidded box with finial (Oct. meeting).



Pete Holtus - Small lidded box (Oct. meeting).



Dave Hawley – Cherry bowl.



Bear Limvere – African knobthorn acacia hollow form.



Grover Brown – Spalted sycamore hollow form. A challenge of balance!



Ron Ainge – Spiral-cut box elder ornament with dyed finials.



Terrence Rice – Osage natural edged bowl.



Terrence Rice – Walnut bowl with natural-edged base.



Terrence Rice – Walnut bowl with natural-edged rim.

FRONT RANGE WOODTURNERS



Grover Brown – Spalted sycamore hollow form.



Pete Holtus – Segmented holly and walnut ornaments on eccentric walnut bases.



Genack – Stepped sided bowl.



Terrence Rice – Walnut bowl with turquoise inlay.



Pete Holtus – More beautiful ornaments on eccentric bases.



Steve Claycomb – Walnut candlesticks.



Les Stern – Pine burl hollow form.



Pete Holtus – Close-up of hollow form used to make ornaments.



Steve Claycomb – Mountain juniper candlesticks.



Les Stern – Natural-edged box elder bowl.



Genack – Elm natural-edged bowls.



Bruce Perry – Maple hollow form.

FRONT RANGE WOODTURNERS



Bruce Perry – Ponderosa pine hollow form.



Pete Holtus – Segmented ornament.



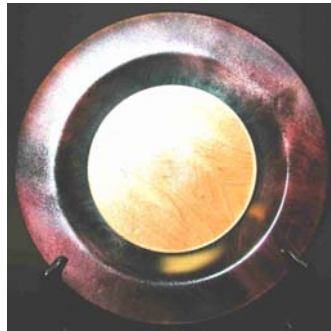
Bruce Perry – Small table with two-axis legs.



Bruce Perry – Aspen miniature hollow form with dyed rim.



Bruce Perry – Small lidded boxes with finials.



Steve Murphy – Dyed maple platter.



Bruce Perry – Small lidded boxes with finials. ❖



Alan Lacer himself.



Samples of small boxes created using Alan's skew method.



MDF disk with metal-cutting sandpaper disk used to grind shape of O1 drill rod steel.

Demonstrations

Alan Lacer did two demonstrations: the afternoon session showed how to create a homemade hook tool; the evening demonstration showed skew techniques.

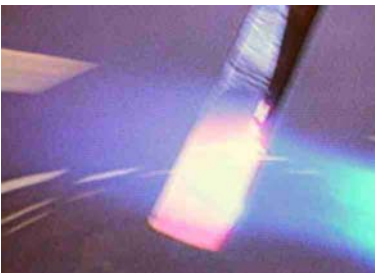
FRONT RANGE WOODTURNERS



Close-up showing ground shape with wedge. The narrow edge will be the cutting edge.



Heating tip with MAPP gas torch to prepare for bending.



Showing cherry-red tip. Tool is now soft enough to bend with needle-nosed pliers.



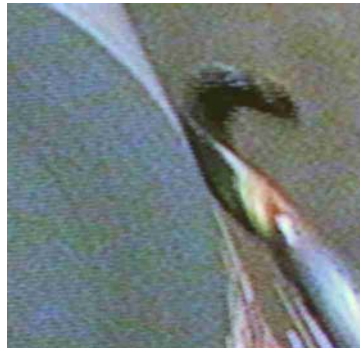
Reheating bent tip to get ready for tempering. After tip glows cherry red, douse in olive oil in metal can. Stir tip to disperse heat. Be careful of potential fire hazard – have an appropriate fire extinguisher or metal lid to smother fire. After

dousing, polish tool as clean as possible.

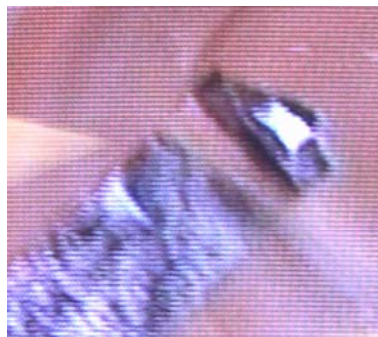


After tempering, tool must be annealed to remove brittleness. Heat about 2 inches from tip and watch the bands of color approach the tip. When the dark straw-colored strip spreads around the tip, immediately quench in olive oil again.

If you allow the blue or violet strips to go around the tip, you must repeat the tempering process. These colors mean the steel is too soft.



Sharpening edge of hook tool on grinding wheel.



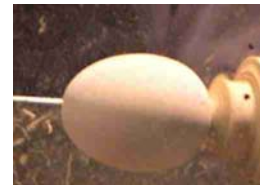
Homemade hook tool shown in use.



Using point of skew to turn beads.



Showing honing disk used to create razor sharp edge on skew. Disks of MDF glued and then loaded with white, stainless-steel compound ("ZAP"). The black shows that the compound is actually honing.

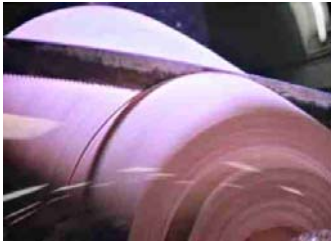


Egg created using skew.



Reducing diameter using peeling cut.

FRONT RANGE WOODTURNERS



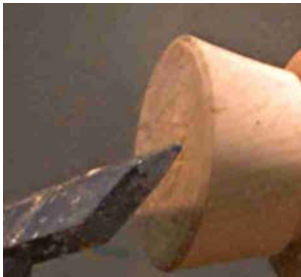
Using a hacksaw to part the cylinder.



Close-up showing notches cut into rim of dead-center drive chuck.



Box in process, turned completely with skew.



Using skew to clean bottom of box.



Finished box.❖

Rockler

Patronizing their store is the best "thank you" we can give Rockler for their generosity in letting us use their facilities for our ever-growing membership. Keep in mind that they keep the register open late on meeting nights just for us. Just be sure to complete any purchases no later than the mid-meeting break so these poor guys can start shutting down and go home.

As always – all FRW members get 10% off all items, except electrical or sale items, all the time. Just present your FRW membership card at time of purchase. (Note: This offer is only good at the Denver retail location, and is not valid for any other location or for Internet purchases.)

If you have suggestions for tools or materials that Rockler can carry, contact Rich Johnson, manager of the Denver store. Rockler web site: www.rockler.com.

Web Stuff

The Front Range WoodTurners Web site address:

www.frontrangewoodturners.com

Get the latest information about upcoming events, meetings, and view the excellent photos of the show and tell gallery.

Other sites of interest:

(Rky Mtn Woodturners, Ft Collins)
www.verinet.com/~drmeli/rmw.html
www.lathes.co.uk
www.woodworkingbasics.com
www.treelineusa.com
www.woodturnerscatalog.com
www.kestrelcreek.com
www.choicewoods.com
www.woodturner.com
www.woodturningonline.com
www.kazistudio.com ❖

Classifieds

Please note: All advertising in the Classifieds is free, but please be sure to notify the newsletter editor if an item is no longer for sale.

Ad Policy – All ads that are older than 3 months will be deleted, unless you contact the newsletter editor.

For Sale – Corian. Several colors. Large enough for jigs and fixtures with a few as large as 30"x50". \$5 per sq. ft. Contact Rob Marquese at 303-255-2959.

For Sale – Delta 3 Hp Shaper (#43-455). Mobile base, dust port. 2 rail/style bit sets, 5 other cutters. Like new. Contact Don Natale at 303-810-2663.

For Sale – Woodfast Long Bed Lathe, 1.5hp variable speed, 220V, 39" between centers, cast iron bed, 1 1/4" x 8 TPI spindle, No. 2 Morse tapers, 20" capacity, 24-index pin. Original price was \$3,495. Asking price is \$2,800 (obo). Excellent condition! Contact Jose Berrios at 720-261-9639 (leave msg because out of town for 2 weeks).

For Sale - Scroll Saw, Delta 40-680, 20", 6 speed, w/ stand. NEW, still sealed in shipping crate. \$400. (amazon \$479). And Belt Sander, Porter-Cable 362VS, 4" x 24", variable speed, w/ dust collector bag. NEW, still in box. \$200. (amazon \$239). Richard Kuivila - 303 708-0905.

For Sale – Delta 18" Q-3 scroll saw with stand and magnifying light - \$350 (or best offer). Jet 1236 wood lathe with several face plates and a one-way stronghold chuck with 3 set of jaws (1, 2, and MegaJumbo) - \$675 (or best offer). Dewalt Biscuit Jointer, used once - \$110 (or best offer). Standard McNaughton Center Saver 1" post– never used \$210. Contact Andy Zartman 303-673-2015 (wk) 303-859-0724(cell)

For Sale – 20" bandsaw, 220V, \$1100. Rockwell Shaper, \$250; 10 1/2' metal bending brake; used once, \$900; Contact Steve DeJong at 303-829-0246❖

FRONT RANGE WOODTURNERS

Club Information

President: Ron Bentall
phone: 303-322-8272
e-mail: iamgray@ix.netcom.com

Vice President/Program Director/Videographer Andy Zartman
phone: 303-859-0724
email: AWZartman@comcast.net

Treasurer: Richard Bailey
phone: 303-252-1405

Secretary & Newsletter Editor: Alisa Limvere
phone: 303-648-3414
e-mail: limvere@fgn.net

Deadline for submitting material for inclusion in the newsletter is 15 days before the next meeting.

Membership & Publicity Chairman: Bear Limvere
phone: 303-648-3414
e-mail: Bear@BearLimvere.com

Librarian: Jim Applegate
Raffle-Wood Director: Steve Claycomb
Group Buy Coordinator: Dave Hawley
phone: 303-443-2332
email: dave_hawley@comcast.net
Shop Tour & Mentor Program Chairman: Phil Houck
phone: 303-985-4692

Internet Chairman: Brandon Mackie
email: latherunner@hotmail.com.

Social Chairperson: Rose Phillips
home phone: 303-740-9663 and enter 6014 during the message
work, 303-715-0172

General Meeting Information

Normal meetings are the first Tuesday of every month, unless otherwise rescheduled.

Meeting place is at Rockler Woodworking & Hardware, 2553 So. Colorado Blvd. #108 Denver, CO (west side of Colorado Blvd. opposite the mall).

Meetings are 6:30 PM - 9:30 PM.





FRONT RANGE WOODTURNERS

December, 2005, Volume 5 - Number 12

Front Range WoodTurners
P.O. Box 714
Franktown, CO 80116
