



# FRONT RANGE WOODTURNERS

October, 2005, Volume 5 - Number 10

## Inside this Issue

<b>Upcoming Events</b> .....	1
<b>News</b> .....	1
<i>Exclusive Rockler Sale Night for FRW Members!</i> .....	1
<i>Mentoring Program Volunteer Wanted</i> .....	1
<i>Our Deepest Sympathies</i> .....	1
<i>Alan Lacer Class</i> .....	1
<i>Woodworking Show</i> .....	1
<i>Holiday Party</i> .....	2
<i>Volunteers Needed</i> .....	2
<i>Woodcraft Turning Demos</i> .....	2
<i>Bulk Orders</i> .....	2
<i>Club Library</i> .....	2
<i>Featured Providers</i> .....	2
<i>Wood Events</i> .....	2
<i>Materials Suppliers</i> .....	3
<i>Miscellaneous</i> .....	4
<b>Show and Tell</b> .....	4
<b>Demonstrations</b> .....	5
<b>Rockler</b> .....	6
<b>Web Stuff</b> .....	6
<b>Classifieds</b> .....	7
<b>Club Information</b> .....	7
<i>General Meeting Information</i> .	7

## Upcoming Events

**Important Note:** Even though a turning challenge is announced for a meeting, this does not mean that other items can't be brought for the show & tell. Feel free to bring in what you've created and don't feel you have to be a master turner to show off your work.

*October* – Tuesday, October 4.  
Tom Wirsing will be demonstrating 2-center legs. Turning challenge: spiral work.

*November* – Tuesday, November 1.  
Alan Lacer will be demonstrating skew chisel techniques.

*December* – Annual FRW Holiday Party. ❖

## News

### *Exclusive Rockler Sale Night for FRW Members!*

Rockler is hosting an exclusive sale night FRW members on Tuesday, October 4. From 5:00 pm to 7:00 pm, Rockler will be providing a 25% discount on all items that do not have an electric cord or is already on sale. In addition, they will be providing pizza, door prizes, and factory representatives to answer your questions.

This is an excellent opportunity for you to stock up on supplies, stock, and tools, and to thank Rockler for allowing us to meet on their premises. Don't miss it!

### *Mentoring Program Volunteer Wanted*

The mentoring program provides hands-on training at the Rockler facility and members' shops, allowing FRW members to learn new techniques, tools, and beginning turning. It's an excellent method to "get your feet dusty."

Due to time constraints, our previous volunteer is unable to support the mentoring program for

our club until at least the end of the year. If you are interested in volunteering to hold mentoring sessions, please contact Ron Bentall at the next meeting.

### *Our Deepest Sympathies*

Unfortunately, we've lost another long-term member. For those who may not have heard, Mr. Earl Ellis passed away on September 10. Mr. Ellis was loved by many members, and we will sorely miss him. We express our deepest sympathies to Mr. Ellis' family and friends.

### *Alan Lacer Class*

Alan Lacer, our November demonstrator, will be giving classes at Rockler on Wed. and Thurs., November 2 and 3. Fee will be \$200-250 for both days, depending on the number who sign up. Mr. Lacer will be teaching advanced skew chisel techniques and end-grain turning. Check out Alan's work at [www.alanlacer.com](http://www.alanlacer.com). Contact Any Zartman if you are interested, at phone: 303-859-0724 or email: [AWZartman@comcast.net](mailto:AWZartman@comcast.net).

### *Woodworking Show*

The Woodworking Show is scheduled for Nov. 18 thru 20 at the Denver Merchandise Mart (800-289-6278). Martie Christensen will be organizing the FRW booth. He will have a sign-up sheet next month for volunteers to man the booth (min. 2-hour

# FRONT RANGE WOODTURNERS

---

commitment). Volunteers will get free admission to the show. We will set up at least 2 lathes and turn for the customers of the show. This is a major recruiting opportunity for our club. Please contact Martie at the next meeting or call him at 303-252-7776.

## *Holiday Party*

Goodness, where did the year go! We are already looking down the bore at another holiday season. As usual, in place of our normal December meeting, we will be having our Annual FRW Holiday Party. The Limveres have volunteered to do the food again. However, we do need help in the following areas:

- We need a location. At this time, the church where we met last year cannot commit to us, so we want to see if we can find another location nearby that will suffice. It must have a kitchen, dining area inside, and tables and chairs that we can use. Keep in mind that we can expect anywhere from 110-170 people (I believe the count was about 120 last year). The club expects to pay a reasonable rental fee. We should book as soon as possible, so if anyone has suggestions, please bring them to Ron Bentall or Bear Limvere.
- We need a party organizer that can coordinate all the teams (location contact, auction, raffle, dinner, setup, and cleanup).
- We need volunteers for the above teams.

Please contact Ron Bentall at 303-322-8272 or Bear Limvere at 303-648-3414 if you can help.

## *Volunteers Needed*

We need volunteers who can show up at 5:00 pm at Rockler before each meeting to brew coffee and setup. Please contact Ron Bentall or just appear. We'll put you to work.

## *Woodcraft Turning Demos*

Pete Holtus does demos every Thursday, 6:30-8:30 pm at Woodcraft, 4403 Tamarac Parkway, Denver.. Contact Pete at 303-364-5365 for more information.

## *Bulk Orders*

As always, check with Dave Hawley at each meeting if you have placed an order with him or if you want to get in on one of the bulk orders that he organizes. You can also call him at 303-443-2332 if you have questions or orders.

Following is the schedule of bulk orders that Dave will be organizing for 2005:

Handibond – parent of Starbond (CA Glue): Oct  
Industrial Abrasives: Oct  
Craft Supplies: Oct  
Cutting Edge: Oct

All bulk orders depend on making minimum amounts to get the discounts. Again and as always, thanks, Dave, for working so hard to save us all some money.

## *Club Library*

### *Suggested Items*

Contact Jim Applegate for suggestions about materials (books, videos, DVDs) to be added to our club library. The club does have a budget to purchase library

materials and look to you to tell us what you want.

Of course, if you want to make donations to the library, all donations are gratefully accepted.

## *Featured Providers*

*Rocklers*, Colorado Blvd, Denver, provides a 10% discount for club members – see the Rockler section on page 6. Rockler will be keeping the cash register open until the end of the meeting. Try to do your shopping before the end of the break, so that they can get out quickly after the end of the meeting.

*Guiry's Wallpaper and Art Supplies* - All six Guiry's locations are providing to members of Front Range Woodturners discounts on most everything in the store. Give the contractor account number of 7837 and name of "Front Range Woodturners" to the Guiry's cashier to get your discount.

*Wood Emporium*, Loveland, provides a 10% discount for FRW members.

*Klingspor Catalog Orders*: Members who signed up can get their 10% discounts by letting them know you're on the FRW member list. Second, if you order on-line, first send an email to [sales@woodworkingshop.com](mailto:sales@woodworkingshop.com) with your username (format is first name + last initial - i.e., John Smith would be "johns"), billing address, phone # and preferred password. You will receive a confirmation email within 2 business days. Members can be removed from this email list upon request. You can contact Dave Hawley at [davedorothy@comcast.net](mailto:davedorothy@comcast.net) or at 1516 Lodge Court, Boulder, 80303.

Craft Supplies offers monthly deals with special discount codes that expire monthly. Discounts and codes will be announced at each FRW meeting.

## *Wood Events*

We receive notices of events, classes, or seminars that we think you may find interesting. (Note: FRW is not endorsing these

# FRONT RANGE WOODTURNERS

events, but only providing the information for your convenience.)

## ***Rocky Mount School of Woodturning***

Provides Basic, Intermediate, Advanced, and Specialty classes in woodturning. Full facilities. Contact Lee Carter at Rocky Mountain School of Woodturning, 4625 Kiva Drive, La Porte, CO 80535. Phone: 970-221-4382. Email: [LLJTC4X4149@CS.COM](mailto:LLJTC4X4149@CS.COM).

## ***Southwest Association of Turners Symposium***

The SWAT Symposium is scheduled for September 30 – October 2 in Wichita Falls, TX. Fee is \$75 total for all three days. See their website at [www.swaturners.com](http://www.swaturners.com).

## ***Totally Turning 2005 Symposium***

The Adirondack Woodturners Association of Upstate New York is sponsoring the Totally Turning Symposium in Albany, NY, on Oct. 15-16, 2005. See their website at [www.totallyturning.com](http://www.totallyturning.com) or call Eric Mead at (518) 275-0431 for more information.

## ***2005 Blue Mountain International Woodturning Symposium, Australia,***

Held in Emu Heights, outside of Sydney, the Blue Mountain Woodturning Symposium is held on Oct. 29-30, 2005. Fee is \$180. See their website at [www.pnc.com.au/~k\\_j/woodturner](http://www.pnc.com.au/~k_j/woodturner) or contact Rhys Jones at [woodturner@pnc.com.au](mailto:woodturner@pnc.com.au).

## ***2006 Desert Woodturning Roundup***

The Arizona Woodturners Association is hosting this

symposium on Feb. 18-19, 2006. See their website at [www.desertwoodturningroundup.com](http://www.desertwoodturningroundup.com) for more details.

## ***Materials Suppliers***

### ***Wood Suppliers***

Following is a list of wood suppliers in the Colorado area. If you have more, contact Steve. (Note: FRW is not endorsing these suppliers, but only providing the list for your convenience.)

Rockler Woodworking and Hardware, 2553 S. Colorado Blvd., #108, Denver CO 80222, 303-782-0588, web [www.rockler.com](http://www.rockler.com).

Consolidated Hardwoods, Inc., 11850 Vance, Broomfield, CO 80020, phone 303-466-1839, fax 303-469-3580.

Swingle Tree Co., 8585 E. Warren Ave., Denver, CO 80231, phone 303-337-6200 or 303-369-2892.

Centennial Wood Co, Inc., 985 S. Logan St., Denver, CO 80209, phone 303-778-6209.

Austin Hardwoods of Denver, Inc., 1301 S. Platte River Dr., 80223, phone 303-733-1292 or 303-722-1007, web [www.austinhardwoods.com](http://www.austinhardwoods.com).

Colorado Tree and Shrubbery Specialists, Inc., 4760 Parfet St., Wheatridge, CO 80033, phone 303-431-4155.

Paxton Wood Source, 4837 Jackson St., Denver, CO 80213, phone 303-399-6047, web [www.paxtonwood.com](http://www.paxtonwood.com).

Custom Hardwoods, phone 303-280-6381, affiliated with Tech Western Warehouse, 4520 Indiana St., Golden CO 80403, contact Steve Bell phone 303-902-3115, 303-278-6882, or 303-452-9180.

Woodcraft Supply Corp., 4403 S. Tamarac Parkway, Denver, CO 80237, phone 303-290-0007.

Woodcraft Unlimited, Inc., 2301 S. Delaware St., Denver CO 80223, phone 303-778-9103.

Diverse Hardwoods, 617 1<sup>st</sup> Ave., Longmont, CO 80501, phone 303-651-1020.

TC Woods in Lafayette has local woods and walnut in stock. They also have a bandsaw mill to convert logs into lumber. Contact them at 303-666-8989.

West Penn Hardwoods has turning blanks from the Amazon. See their website at [www.westpennhardwoodsamazon.com](http://www.westpennhardwoodsamazon.com).

Dennis Lacen has various woods from the Midwest. Contact him at 9477 Highway 85, Fort Lupton, CO, 303-594-7885.

Manzanita Burl from Mt. Lassen, CA. Crimson and gold grained. 20% discount to Woodclub members. Contact [jackburl96001@yahoo.com](mailto:jackburl96001@yahoo.com) for more information.

Fresh cut Norfolk Island Pine in log form in many sizes; Spalted Citrus, Bay Laurel, Red Cedar and Florida grown Mahogany. 10% discount to club members. Shipped as individual pieces via UPS or USPS, or in larger amounts via a commercial trucking company. Contact Joe Schneider at [jschneider1@cfl.rr.com](mailto:jschneider1@cfl.rr.com).

## ***Tool and Steel Suppliers***

Victor Machinery Exchange, Inc. 251 Centre Street New York, NY 10013 Phone: 800-723-5359 <http://www.victornet.com>

MSC Industrial Supply 6100 Stapleton Drive, South Unit A Denver, CO 80216 Local (303) 935-2022 or (800) 332-0210 Fax: (303) 937-1228 Email: [branchden@mscdirect.com](mailto:branchden@mscdirect.com) Web: [www.mscdirect.com](http://www.mscdirect.com)

DoAll Industrial Supply custom bandsaws 2955 S. Tejon St. Englewood, CO 80110 Phone: 800-92-DOALL Web: [www.doall.com](http://www.doall.com)

Lab Metal (metal putty for "enhancing" cracks)

# FRONT RANGE WOODTURNERS

Alvin Products  
350 Merrimack St.  
Lawrence, MA 01843  
Phone: 978-975-4580  
Web: [www.alvinproducts.com](http://www.alvinproducts.com)

(Note: FRW is not endorsing these suppliers, but only providing the information for your convenience.)

## *Misc. Suppliers*

Brandon Mackie has a source of filters for those of you who want to create or maintain filtration in your shop. Contact him at the next meeting or at [latherunner@hotmail.com](mailto:latherunner@hotmail.com).

Sanding disks - Steve Worcester in Texas ([www.turningwood.com](http://www.turningwood.com) or 972-424-7958)

## *Miscellaneous*

### *Courtesy During Meetings*

We have been requested to please stay seated and quiet during the meeting and demonstration as a courtesy to our demonstrators and fellow members. You feel the need for conversation during the meeting or demonstration, please feel free to step out into the Rockler store.

Also, we must make sure to return promptly after the break to make sure we don't lose time for our demonstrator.

### *Contacting the Editor*

Due to the hundreds of spam emails that Alisa receives every day, she has requested that if you want to contact her via email, be sure to include "FRW" in the subject line. This will help her not miss your email or accidentally delete when she is clearing the garbage from her inbox. Her email address is [Limvere@fgn.net](mailto:Limvere@fgn.net).

### *Shop Tours*

Phil Houck has the sign-up sheet for those interested in giving a tour

or going on a tour. Just remember – no one expects a sparkling clean shop, so don't worry about putting it off because you don't have time to tidy up. ❖

## *Show and Tell*

There was a silent Show and Tell with no turning challenge for the September meeting, to maximize time with Mr. Mortimer.



Grover Brown – Mesquite, southwestern-style hollow form with burned details.



Harry Munson – Segmented maple and walnut bowl.



Grover Brown – Cedar hollow form.



Bear Limvere – Australian desert burl hollow form with brass and malachite inlay.



Grover Brown – Large sycamore hollow form.



Jill Birch – Spalted birch hollow form.

# FRONT RANGE WOODTURNERS



Bear Limvere – Myrtle hollow form with pink ivory and African blackwood eccentric finial.



Fred Meyer – Carved walking stick with picture stone ball.



Bear Limvere – Big leaf maple hollow form.



Bear Limvere – Bottlestoppers with eccentric African olive and burl handles. ❖

## *Demonstrations*

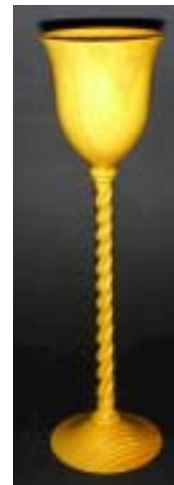
Stuart Mortimer demonstrated how to make spiral hollow forms and finials. He presented during two sessions in the afternoon and evening.



Mr. Stuart Mortimer.



Exquisite samples of his work.



The goblet he turned in the afternoon demo.

# FRONT RANGE WOODTURNERS



Dowels showing how he inserts different colored woods to show when spiral cut.



Sanding the spirals with strips of sanding cloth.



Showing the layout for his "pigtail" spiral. ❖



Showing the grid Stuart uses to lay out his spirals.



Making chips fly with his hollowing tool!



Using a gouge to start the spiral cut.



Turning with a light inserted in the hollow form that shines through the spiral cuts. (Yes, it was a glass bulb.)



Using the Arbortech tool to cut the spirals deeper.

## Rockler

Patronizing their store is the best "thank you" we can give Rockler for their generosity in letting us use their facilities for our ever-growing membership. Keep in mind that they keep the register open late on meeting nights just for us. Just be sure to complete any purchases no later than the mid-meeting break so these poor guys can start shutting down and go home.

As always – all FRW members get 10% off all items, except electrical or sale items, all the time. Just present your FRW membership card at time of purchase. (Note: This offer is only good at the Denver retail location, and is not valid for any other location or for Internet purchases.)

If you have suggestions for tools or materials that Rockler can carry, contact Rich Johnson, manager of the Denver store. Rockler web site: [www.rockler.com](http://www.rockler.com).

## Web Stuff

The Front Range WoodTurners Web site address:

[www.frontrangewoodturners.com](http://www.frontrangewoodturners.com)

Get the latest information about upcoming events, meetings, and view the excellent photos of the show and tell gallery.

# FRONT RANGE WOODTURNERS

Other sites of interest:

(Rky Mtn Woodturners, Ft Collins)  
[www.verinet.com/~drmeli/rmw.html](http://www.verinet.com/~drmeli/rmw.html)  
[www.lathes.co.uk](http://www.lathes.co.uk)  
[www.woodworkingbasics.com](http://www.woodworkingbasics.com)  
[www.treelineusa.com](http://www.treelineusa.com)  
[www.woodturnerscatalog.com](http://www.woodturnerscatalog.com)  
[www.kestrelcreek.com](http://www.kestrelcreek.com)  
[www.choicewoods.com](http://www.choicewoods.com)  
[www.woodturner.com](http://www.woodturner.com)  
[www.woodturningonline.com](http://www.woodturningonline.com)  
[www.kazistudio.com](http://www.kazistudio.com) ❖

## Classifieds

*Please note:* All advertising in the Classifieds is free, but please be sure to notify the newsletter editor if an item is no longer for sale.

*Ad Policy* – All ads that are older than 3 months will be deleted, unless you contact the newsletter editor.

**For Sale** – Woodfast Long Bed Lathe, 1.5hp variable speed, 220V, 39" between centers, cast iron bed, 1 ¼" x 8 TPI spindle, No. 2 Morse tapers, 20" capacity, 24-index pin. Original price was \$3,495. Asking price is \$2,800 (obo). Excellent condition! Contact Jose Berrios at 720-261-9639 (leave msg because out of town for 2 weeks).

**For Sale** - Scroll Saw, Delta 40-680, 20", 6 speed, w/ stand. NEW, still sealed in shipping crate. \$400. (amazon \$479). And Belt Sander, Porter-Cable 362VS, 4" x 24", variable speed, w/ dust collector bag. NEW, still in box. \$200. (amazon \$239). Richard - 303 708-0905.

**For Sale** – Delta 18" Q-3 scroll saw with stand and magnifying light - \$350 (or best offer). Jet 1236 wood lathe

with several face places and a one-way stronghold chuck with 3 set of jaws (1, 2, and MegaJumbo) - \$675 (or best offer). Dewalt Biscuit Jointer, used once - \$110 (or best offer). Standard McNaughton Center Saver 1" post– never used \$210. Contact Andy Zartman 303-673-2015 (wk) 303-859-0724(cell)

**For Sale** – 20" bandsaw, 220V, \$1100. Rockwell Shaper, \$250; 10½' metal bending brake; used once, \$900; Contact Steve DeJong at 303-829-0246❖

## Club Information

*President:* Ron Bentall  
phone: 303-322-8272  
e-mail: iamgray@ix.netcom.com

*Vice President/Program Director/Videographer* Andy Zartman  
phone: 303-859-0724  
email: AWZartman@comcast.net

*Treasurer:* Richard Bailey  
phone: 303-252-1405

*Secretary & Newsletter Editor:* Alisa Limvere  
phone: 303-648-3414  
e-mail: limvere@fgn.net  
Deadline for submitting material for inclusion in the newsletter is 15 days before the next meeting.

*Membership & Publicity Chairman:* Bear Limvere  
phone: 303-648-3414  
e-mail: Bear@BearLimvere.com

*Librarian:* Jim Applegate  
*Raffle-Wood Director:* Steve Claycomb

*Group Buy Coordinator:* Dave Hawley  
phone: 303-443-2332  
email: dave\_hawley@comcast.net

*Shop Tour & Mentor Program Chairman:* Phil Houck  
phone: 303-985-4692

*Internet Chairman:* Brandon Mackie  
email: latherunner@hotmail.com.

*Social Chairperson:* Rose Phillips  
home phone: 303-740-9663 and enter 6014 during the message work, 303-715-0172

## General Meeting Information

Normal meetings are the first Tuesday of every month, unless otherwise rescheduled.

Meeting place is at Rockler Woodworking & Hardware, 2553 So. Colorado Blvd. #108 Denver, CO (west side of Colorado Blvd. opposite the mall).

Meetings are 6:30 PM - 9:30 PM.





# **FRONT RANGE WOODTURNERS**

October, 2005, Volume 5 - Number 10

---

Front Range WoodTurners  
P.O. Box 714  
Franktown, CO 80116

---