



# FRONT RANGE WOODTURNERS

February, 2005, Volume 5 - Number 02

## Inside this Issue

<b>Upcoming Events</b> .....	1
<b>News</b> .....	1
<i>Dues are Due, Dudes</i> .....	1
<i>Keith Gotschall Class</i> .....	2
<i>Channel 6 Auction</i> .....	2
<i>Bulk Orders</i> .....	2
<i>Club Library</i> .....	2
<i>Featured Providers</i> .....	2
<i>Wood Events</i> .....	2
<i>Materials Suppliers</i> .....	3
<i>Miscellaneous</i> .....	3
<b>Show and Tell</b> .....	4
<b>Demonstrations</b> .....	6
<b>Rockler</b> .....	6
<b>Web Stuff</b> .....	6
<b>Classifieds</b> .....	6
<b>Club Information</b> .....	7
<i>General Meeting Information</i> .	7

## Upcoming Events

**Important Note:** Even though a turning challenge is announced for a meeting, this does not mean that other items can't be brought for the show & tell. Feel free to bring in what you've created and don't feel you have to be a master turner to show off your work.

**February** – February 1. Keith Gotschall will be demonstrating a Lidded Sugar Bowl. Turning challenge: Tops.

**March** – March 1. Turning challenge: Candle or Oil Lamp Holder.

**April** – April 5. Turning challenge: Turned boxes.

**May** – May 3. Turning challenge: Multi-axis or Eccentric. ❖

## News

### *Dues are Due, Dudes*

It's that time of year. Annual dues are due again. Dues are the following:

- Individual - \$35
- Couple - \$40
- Student - \$17
- Under 12 years age – Free!

Richard Bailey, our Club Treasurer, is responsible for gathering dues payments. Bear Limvere, our Club Membership Chair, is responsible for gathering your membership information. Please contact Richard and Bear at the next meeting or mail a check for your dues to the following address:

Front Range WoodTurners  
P.O. Box 714  
Franktown, CO 80116

Please include the following information with your dues:

Name \_\_\_\_\_  
 Spouse Name (if signing on as Couple) \_\_\_\_\_  
 Street \_\_\_\_\_  
 City \_\_\_\_\_  
 State \_\_\_\_\_ Zip \_\_\_\_\_  
 Home Telephone \_\_\_\_\_  
 Work Telephone \_\_\_\_\_  
 Email \_\_\_\_\_  
 Web site \_\_\_\_\_

By default, if you provide an email address, you will receive your newsletters via email. If you do not want this, please indicate it when

you send in your dues and the newsletters will be mailed via USPS.

You will receive multiple benefits of being a member, including but not limited to the following:

- Monthly newsletter
- Ability to check items out of our extensive library
- Discounts in regular bulk orders of various supplies
- Discounts at stores in the Denver area (including the 10% discount at our Rockler store!)
- Monthly demonstrations by locally and internationally known woodturners
- Being listed in and receiving a copy of the membership roster
- And last, but not least, access to the best bunch of woodturners around for questions, war stories, or just to visit.

All our club events are funded by your dues.

**Important** - If your dues are not paid by mid-February, you will no longer receive our newsletter (unless you are a recent guest who is still in the 2-month trial period).

Bear Limvere will be sending out the member roster with the March or April newsletter, so if you want to receive a roster or be in it, please be sure to pay your dues by mid-February.

# FRONT RANGE WOODTURNERS

## ***Keith Gotschall Class***

Keith will be teaching a 2-day class on Feb. 26-27 at Rockler for 4-6 people. Fee is \$180 per person for both days, including materials. You will learn techniques, bowl and spindle turning, and will make a platter and a sugar bowl. If you are up for it, he will also show how to turn a matching wooden spoon. This is an excellent chance to learn from one of the nation's foremost turners.

## ***Channel 6 Auction***

Gene Wentworth is gathering donated items for the Channel 6 Auction. We require a minimum of 8 items, each worth at least \$75, totaling over \$1,000 in value to get our own table. The March meeting is the *final* due date when Gene can accept items. If you bring an item to donate, be sure to get a form from him to fill out with information about the item.

In addition to the satisfaction of knowing they help a good cause, donors are invited to a rather posh "art preview" party on March 5 for the artists who donate, hosted by Channel 6.

## ***Bulk Orders***

As always, check with Dave Hawley at each meeting if you have placed an order with him or if you want to get in on one of the bulk orders that he organizes.

Following is the schedule of bulk orders that Dave will be organizing for 2005:

Industrial Abrasives: Jan, Apr, Jul, Oct  
Starbond (CA Glue): Mar, Sept  
Craft Supplies: Apr, Oct  
Cutting Edge (Tools): Apr, Oct.

All bulk orders depend on making minimum amounts to get the

discounts. The greater the order, typically the greater the discount. Again and as always, thanks, Dave, for working so hard to save us all some money.

## ***Club Library***

### ***Suggested Items***

Contact Jim Applegate for suggestions about materials (books, videos, DVDs) to be added to our club library. The club does have a budget to purchase library materials and look to you to tell us what you want.

Of course, if you want to make donations to the library, all donations are gratefully accepted.

### ***Featured Providers***

*Rocklers*, Colorado Blvd, Denver, provides a 10% discount for club members – see the Rockler section on page 6. Rockler will be keeping the cash register open until the end of the meeting. Try to do your shopping before the end of the break, so that they can get out quickly after the end of the meeting.

*Guiry's Wallpaper and Art Supplies* - All six Guiry's locations are providing to members of Front Range Woodturners discounts on most everything in the store. Give the contractor account number of 7837 and name of "Front Range Woodturners" to the Guiry's cashier to get your discount.

*Wood Emporium*, Loveland, provides a 10% discount for FRW members.

Klingspor Catalog Orders: Those who signed up at the meetings are now on Klingspor member list. You can now order from Klingspor catalog and get a 10% discount (except for machinery). Klingspor will honor their 10% discount commitment in one of several ways. First, if you call in, let them know you're on the FRW member list, and you'll get the discount. Second, if you want to order on-line, first send an email to [sales@woodworkingshop.com](mailto:sales@woodworkingshop.com)

with your username (format is first name + last initial - i.e., John Smith would be "johns"), billing address, phone # and preferred password. You will receive a confirmation email within 2 business days. Members can be removed from this email list upon request. You can contact Dave Hawley at [davedorothy@comcast.net](mailto:davedorothy@comcast.net) or at 1516 Lodge Court, Boulder, 80303.

Craft Supplies offers monthly deals with special discount codes that expire monthly. Discounts and codes will be announced at each FRW meeting.

## ***Wood Events***

We receive notices of events, classes, or seminars that we think you may find interesting. (Note: FRW is not endorsing these events, but only providing the information for your convenience.)

### ***Rocky Mount School of Woodturning***

Provides Basic, Intermediate, Advanced, and Specialty classes in woodturning. Full facilities. Contact Lee Carter at Rocky Mountain School of Woodturning, 4625 Kiva Drive, La Porte, CO 80535. Phone: 970-221-4382. Email: [LLJTC4X4149@CS.COM](mailto:LLJTC4X4149@CS.COM).

### ***AAW 2005 Symposium & Exhibition***

The AAW 2005 Symposium is scheduled for July 22-24 in Overland Park, Kansas City. Youths from age 10 through 17 may attend and receive full registration, including banquet, if accompanied by a registered adult. In addition, there will be a drawing and 20 lucky youngsters will receive complete turning outfits of Jet Midi lathes, Nova Precision Midi Chucks, and a Crown Tools turning set. The Symposium fee is \$245. See the AAW website for registration information at [www.woodturner.org](http://www.woodturner.org).

# FRONT RANGE WOODTURNERS

The 2005 AAW show is titled "ReTURN to the Land of Oz." See the AAW website at [www.woodturner.org](http://www.woodturner.org) for information about applying for the 2005 exhibition.

## ***2006 Desert Woodturning Roundup***

The Arizona Woodturners Association is hosting this symposium on Feb. 18-19, 2006. See their website at [www.desertwoodturningroundup.com](http://www.desertwoodturningroundup.com) for more details.

## ***Christian Burchard Woodturning Classes***

Christian Burchard is now offering 3 day weekend turning workshops in Ashland, Oregon. The next dates are:

May 28/29/30

Please contact him at [burchard@direcway.com](mailto:burchard@direcway.com) or call him at 541 482 1916 if you are interested.

## ***Materials Suppliers***

### ***Wood Suppliers***

Following is a list that Steve Claycomb has compiled of wood suppliers in the Colorado area. If you have more, contact Steve. (Note: FRW is not endorsing these suppliers, but only providing the list for your convenience.)

Rockler Woodworking and Hardware, 2553 S. Colorado Blvd., #108, Denver CO 80222, 303-782-0588, web [www.rockler.com](http://www.rockler.com).

Consolidated Hardwoods, Inc., 11850 Vance, Broomfield, CO 80020, phone 303-466-1839, fax 303-469-3580.

Swingle Tree Co., 8585 E. Warren Ave., Denver, CO 80231, phone 303-337-6200 or 303-369-2892.

Centennial Wood Co, Inc., 985 S. Logan St., Denver, CO 80209, phone 303-778-6209.

Austin Hardwoods of Denver, Inc., 1301 S. Platte River Dr., 80223, phone 303-733-1292 or 303-722-1007, web [www.austinhardwoods.com](http://www.austinhardwoods.com).

Colorado Tree and Shrubbery Specialists, Inc., 4760 Parfet St., Wheatridge, CO 80033, phone 303-431-4155.

Paxton Wood Source, 4837 Jackson St., Denver, CO 80213, phone 303-399-6047, web [www.paxtonwood.com](http://www.paxtonwood.com).

Custom Hardwoods, phone 303-280-6381, affiliated with Tech Western Warehouse, 4520 Indiana St., Golden CO 80403, contact Steve Bell phone 303-902-3115, 303-278-6882, or 303-452-9180.

Woodcraft Supply Corp., 4403 S. Tamarac Parkway, Denver, CO 80237, phone 303-290-0007.

Woodcraft Unlimited, Inc., 2301 S. Delaware St., Denver CO 80223, phone 303-778-9103.

Diverse Hardwoods, 617 1<sup>st</sup> Ave., Longmont, CO 80501, phone 303-651-1020.

TC Woods in Lafayette has local woods and walnut in stock. They also have a bandsaw mill to convert logs into lumber. Contact them at 303-666-8989.

West Penn Hardwoods has turning blanks from the Amazon. See their website at [www.westpennhardwoodsamazon.com](http://www.westpennhardwoodsamazon.com).

Dennis Lacen has various woods from the Midwest. Contact him at 9477 Highway 85, Fort Lupton, CO, 303-594-7885.

### ***Tool and Steel Suppliers***

Victor Machinery Exchange, Inc. 251 Centre Street New York, NY 10013 Phone: 800-723-5359 <http://www.victornet.com>

MSC Industrial Supply 6100 Stapleton Drive, South Unit A

Denver, CO 80216  
Local (303) 935-2022  
or (800) 332-0210  
Fax: (303) 937-1228  
Email: [branchden@mscdirect.com](mailto:branchden@mscdirect.com)  
Web: [www.mscdirect.com](http://www.mscdirect.com)

DoAll Industrial Supply  
custom bandsaws  
2955 S. Tejon St.  
Englewood, CO 80110  
Phone: 800-92-DOALL  
Web: [www.doall.com](http://www.doall.com)

Lab Metal (metal putty for "enhancing" cracks)  
Alvin Products  
350 Merrimack St.  
Lawrence, MA 01843  
Phone: 987-975-4580  
Web: [www.alvinproducts.com](http://www.alvinproducts.com)

(Note: FRW is not endorsing these suppliers, but only providing the information for your convenience.)

### ***Misc. Suppliers***

Brandon Mackie has a source of filters for those of you who want to create or maintain filtration in your shop. Contact him at the next meeting or at [latherunner@hotmail.com](mailto:latherunner@hotmail.com).

Sanding disks - Steve Worcester in Texas ([www.turningwood.com](http://www.turningwood.com) or 972-424-7958)

## ***Miscellaneous***

### ***Courtesy During Meetings***

We have been requested to please stay seated and quiet during the meeting and demonstration as a courtesy to our demonstrators and fellow members. You feel the need for conversation during the meeting or demonstration, please feel free to step out into the Rockler store.

Also, we must make sure to return promptly after the break to make sure we don't lose time for our demonstrator.

# FRONT RANGE WOODTURNERS

## Shop Tours

Phil Houck has the sign-up sheet for those interested in giving a tour or going on a tour. Just remember – no one expects a sparkling clean shop, so don't worry about putting it off because you don't have time to tidy up. ❖

## Show and Tell

The turning challenge for January was Bottle Stoppers and Lightpulls. Earl Waible won with his bottle stoppers.



Earl Waible – Laminated bottle stoppers.



Steve Claycomb – Lots of lightpulls in various woods.



Brandon Mackie – “Inside-out” ornaments.



Gene Wentworth – Threaded lid box with carved detail and “pretty top.”



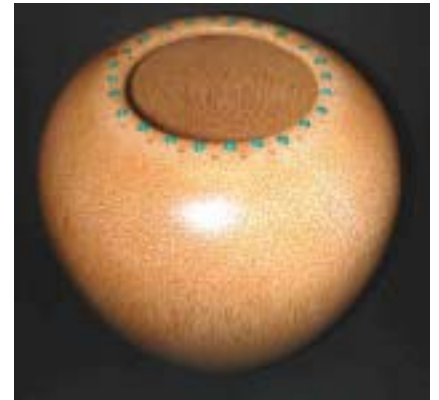
Phil Houck – Goblet with captured rings.



Brandon Mackie – Eccentric-turned maple burl lidded box with ebony and pink ivory finial.



Martin Christensen – Aspen vases.



Jill Rice – Red Palm hollow form with turquoise inlay.



Pete Holtus – Threaded-lid box.



Grover Brown – Natural-edged box elder bowl.

# FRONT RANGE WOODTURNERS



Jill Rice – Brushes for the troops in the Middle East.



Jill Rice – Dyed Red Palm platter. Beautiful example of not being afraid of color.



Pete Holtus – Segmented maple and cocobolo bowl.



Arnie Silverman – Ash bowl with carved rim.



Gene Wentworth – Laminated box with carved corian lid and brass finial.



Gene Wentworth – Lidded platter of pine and epoxy resin.



Grover Brown – Natural-edged box elder bowl.



Pete Holtus – Threaded lid box of ebony and laticed bxwood.



Pete Holtus – “Chinese hat” box with threaded lid.



Pete Holtus – Threaded lid box of ebony and latticed boxwood.



Pete Holtus – Bottlestoppers in various woods.



Pete Holtus – Threaded lid box of ebony and eccentric, latticed boxwood.

# FRONT RANGE WOODTURNERS



Phil Houck – Crabapple vase with carved “pie crust” rim.



Jill Rice – Figured cherry vase. ❖



Ron Bentall – Figured cherry platter made using techniques demonstrated by Bear Limvere.



Grover Brown – Lidded box.

## Demonstrations

Brandon Mackie was our January demonstrator. He demonstrated how to use light to turn thin-walled goblets with natural-edges. Below are samples of the results.



❖

## Rockler

Patronizing their store is the best “thank you” we can give Rockler for their generosity in letting us use

their facilities for our ever-growing membership. Keep in mind that they keep the register open late on meeting nights just for us. Just be sure to complete any purchases no later than the mid-meeting break so these poor guys can start shutting down and go home.

As always – all FRW members get 10% off all items, except electrical or sale items, all the time. Just present your FRW membership card at time of purchase.

(Note: This offer is only good at the Denver retail location, and is not valid for any other location or for Internet purchases.)

If you have suggestions for tools or materials that Rockler can carry, contact Rich Johnson, manager of the Denver store. Rockler web site: [www.rockler.com](http://www.rockler.com).

## Web Stuff

The Front Range WoodTurners Web site address:

[www.frontrangewoodturners.com](http://www.frontrangewoodturners.com)

Get the latest information about upcoming events, meetings, and view the excellent photos of the show and tell gallery.

Other sites of interest:

(Rky Mtn Woodturners, Ft Collins)

[www.verinet.com/-](http://www.verinet.com/-drmelli/rmwt.html)

[drmelli/rmwt.html](http://www.lathes.co.uk)

[www.lathes.co.uk](http://www.lathes.co.uk)

[www.woodworkingbasics.com](http://www.woodworkingbasics.com)

[www.treelineusa.com](http://www.treelineusa.com)

[www.woodturnerscatalog.com](http://www.woodturnerscatalog.com)

[www.kestrelcreek.com](http://www.kestrelcreek.com)

[www.choicewoods.com](http://www.choicewoods.com)

[www.woodturner.com](http://www.woodturner.com)

[www.woodturningonline.com](http://www.woodturningonline.com)

[www.kazistudio.com](http://www.kazistudio.com) ❖

## Classifieds

Please note: All advertising in the Classifieds is free, but please be sure

# FRONT RANGE WOODTURNERS

to notify the newsletter editor if an item is no longer for sale.

**Ad Policy** – All ads that are older than 3 months will be deleted, unless you contact the newsletter editor.

**For Sale** - Jet Model 1236 Lathe - Demo model. Used only for two demonstrations, this 12" x 36" 3/4 HP lathe (Model JWL-1236) features six speeds (550 to 3,000 RPM) and lists for \$799.00. It is fully assembled and tested and can be delivered to your location within metro Denver for \$530.00. Complete product specs available online at <http://www.wmhtoolgroup.com/index.cfm?area=shop&action=detail&iid=11710>. Contact Brian Kirk at [btkirk923@yahoo.com](mailto:btkirk923@yahoo.com) or call 303 324 9449.

**For Sale** – Rockwell lathe, 220v, 1 hp motor, variable speed, 12" swing, 36" spindle length, \$650. Rockwell bandsaw, 14", 1/2 hp motor, \$400. Contact Ted Mellin at 303-973-8216.

**For Sale** – Rockler mobile base - \$20. Delta 1" x 30" strip sander with 20+ new belts - \$60; Mobile miter saw stand - \$20; 10" Craftsman compound miter saw - \$60; Delta 2 speed scroll saw with stand - \$70; Delta 12" bandsaw with extra blades - \$280; Craftsman 3" x 21" belt sander - \$15; B&D 3/8" portable drill with drill press - \$15; Craftsman metal miter with 24" handsaw - \$20. Call Ron Rakickas at 303-699-2440 for more information.

**For Sale** – Delta 12" swing, 36" spindle length, variable speed lathe; 1 owner; purchased about 1987. Great condition. Reverse switch added. 2 toolrests included. \$1,000 obo. Contact Les Stern at 303-744-2159.

**For Sale** – 14" Delta Radial Arm Saw, Industrial, \$250. 14" Delta Band Saw \$200. Contact Ernest Wehner at 303-893-2034.

**For Sale** - For sale--Quick Grip spring clamps, new with packaging, 1-3/8" wide padded jaws open to 1" capacity.

These are the heavy duty fiber-nylon clamps with powerful springs. Big supply, no limits, \$2 each or 10 for \$17. Contact Chuck Kubin, (303)733-0254.

**For Sale** – Sears Craftsman 2 hp variable-speed lathe. 38" between centers, 20" outboard swing. Asking \$300. Lathe Copy Crafter duplicator for the above lathe. \$120. Contact Grover Brown at 303-985-2608.

**For Sale** – Foremost lathe, 3/4 hp, 37" between centers, 12" bowl clearance. 12" and 6" toolrests. 4" and 5" faceplates. Asking \$150 for all. Contact Grover Brown at 303-985-2608.

**For Sale** – 14" Tri-Star bandsaw, 3/4 hp. Asking \$195. Contact Grover Brown at 303-985-2608. ❖

## Club Information

**President:** Ron Bentall  
phone: 303-322-8272  
e-mail: [iamgray@ix.netcom.com](mailto:iamgray@ix.netcom.com)

**Vice President/Program Director/Videographer:** Andy Zartman  
email: [AWZartman@comcast.net](mailto:AWZartman@comcast.net)

**Treasurer:** Richard Bailey  
phone: 303-252-1405

**Secretary & Newsletter Editor:** Alisa Limvere  
phone: 303-648-3414  
e-mail: [limvere@fgn.net](mailto:limvere@fgn.net)

Deadline for submitting material for inclusion in the newsletter is 15 days before the next meeting.

**Membership & Publicity Chairman:** Bear Limvere  
phone: 303-648-3414  
e-mail: [limvere@fgn.net](mailto:limvere@fgn.net)

**Librarian:** Jim Applegate

**Raffle-Wood Director:** Steve Claycomb

**Group Buy Coordinator:** Dave Hawley  
phone: 303-443-2332  
email: [dave\\_hawley@comcast.net](mailto:dave_hawley@comcast.net)

**Shop Tour & Mentor Program Chairman:** Phil Houck  
phone: 303-985-4692

**Internet Chairman:** Brandon Mackie  
email: [latherunner@hotmail.com](mailto:latherunner@hotmail.com).

**Social Chairperson:** Rose Phillips  
home phone: 303-740-9663 and enter 6014 during the message work, 303-715-0172

## General Meeting Information

Normal meetings are the first Tuesday of every month, unless otherwise rescheduled.

Meeting place is at Rockler Woodworking & Hardware, 2553 So. Colorado Blvd. #108 Denver, CO (west side of Colorado Blvd. opposite the mall).

Meetings are 6:30 PM - 9:30 PM.





# **FRONT RANGE WOODTURNERS**

February, 2005, Volume 5 - Number 02

---

Front Range WoodTurners  
P.O. Box 714  
Franktown, CO 80116

---