



FRONT RANGE WOODTURNERS

September, 2004, Volume 4 - Number 09

Inside this Issue

Upcoming Events	1
News	1
Member Survey for Meeting	
Agendas	1
RMW Symposium.....	1
More Symposiums.....	1
Starbond CA Glue Order	2
Craft Supplies and Cutting	
Edge Orders	2
Meeting Ends.....	2
Open Invitation from the Rocky Mountain Woodturning Club ..	2
Demonstrator Exchange	
Program.....	2
West Coast Roundup.....	2
Free Demonstrations	2
Club Library	2
Featured Providers	2
Wood Events	3
Materials Suppliers	3
Miscellaneous.....	4
Show and Tell	4
Demonstrations	6
Rockler	8
Web Stuff	8
Classifieds	8
Club Information	9
General Meeting Information .	9

Upcoming Events

Important Note: Even though a turning challenge is announced for a meeting, this does not mean that other items can't be brought for the show & tell. Feel free to bring in what you've created and don't feel you have to be a master turner to show off your work.

September – September 7. Pete Holtus will be demonstrating ornaments (just in time to start

building your Xmas gift list).
Turning challenge: Natural Edges.

Saturday, September 11, starting at about 9:30 am. Demonstrator: Bill Sullivan will be demonstrating turning Norfolk Pine. He will also have Norfolk Pine for sale.

October – October 5. Turning challenge: Fruit or vegetable.

Monday, October 11, One session in afternoon and one in the evening. Bonnie Klein will be doing a special demonstration of her world-renown tops and miniatures. More details to follow. ❖

News

Member Survey for Meeting Agendas

The FRW Board of Directors met in August. One of the items that was discussed was in response to multiple suggestions (and complaints) about how the meetings are run. We attempt to provide a lot on meeting nights: wood raffle, news, show and tell, demonstrations, etc. Unfortunately, this means that the meeting agenda is very full and sometimes a bit rushed.

The Board came up with three options, but did not want to decide without your input as members. This club is for your benefit and we want to satisfy your requirements and needs. So, we are asking you to vote on which option you would prefer.

Please see the survey at the end of this newsletter discussing the

three proposed options for how the meeting will be run from here on. Fill out your preference and return the survey at the next meeting or mail it to the return address on the newsletter. Thanks for your support.

RMW Symposium

Don't forget. The date for the RMW Symposium is September 25-26 at the Loveland High School. Even if you missed the early registration discount, you can still get the \$10 as a member of FRW.

Our FRW club is sponsoring the "hands-on" classes held on Saturday. This is an opportunity for new turners to actually turn wood. We need a minimum of 2 people per session. A sign-up sheet will be available at the October meeting.

If you are interested in helping in other areas of the symposium, please contact Mark Kurzmack at 970-490-2297. They have their website up at www.rmwoodturningsymposium.com.

More Symposiums

The Southwest Associations of Turners is having their 13th Annual Woodturning Symposium on Oct 1-3 at the Mayborn Convention Center in Temple, TX. Check out their website at www.swaturners.com for registration and lodging information.

The Florida chapter of AAW is putting on their 4th Annual Florida

FRONT RANGE WOODTURNERS

Woodturning Symposium on Jan. 14-16 at the Lake Yale Baptist Conference Church north of Eustis, FL. You can get more information on their website at www.floridawoodturningsymposium.com or call Frank Sospenzi at 352-746-5805.

Starbond CA Glue Order

Dave Hawley is still valiantly trying to collect \$500 in orders for the CA glue discount, and is about \$80 short. This is excellent quality glue and will keep for quite a while if kept in a freezer. Dave will be accepting orders at the September meeting. Bring your cash or check to the August meeting and place your order with him. To get our "deep" discount, we need at least a \$500 order.

Craft Supplies and Cutting Edge Orders

Dave Hawley is building bulk orders for both these providers.

Cutting Edge gives a 10% discount, no tax, no shipping charges, on any non-machinery order of \$500 or more.

Craft Supplies gives discounts for orders of \$1,000 or more.

Contact Dave at the October meeting if you are interested. Thanks Dave, as always, for all your hard work in getting these discount offers for our members!

P.S. If anyone knows of any other vendor that can provide discounts or products not supported by Rocklers, please contact Dave at 303-417-1363.

Meeting Ends

We need to be out of Rockler no later than 9:30 pm after our

meetings. Please be sure to properly discard any drink containers or litter before you leave. FRW appreciates any help you may want to provide in helping to clean up after demos so that we can exit in a timely manner. Thanks in advance for your help.

Open Invitation from the Rocky Mountain Woodturning Club

The Rocky Mountain Woodturning Club has an open invitation for FRW members to come visit during their meetings. They meet on the first Thursday following the first Tuesday of every month at 7:00 pm in Room 105, Industrial Science Building, Colorado State University on the southwest corner of Laurel and Mason in Fort Collins. Check out their website is www.rmwt.org. For more information, contact Bruce Cohen at 303-440-4838 or at bruce@boulder.net, or contact Mark Kurzmack at 970-490-2297 or at kurzmack@webaccess.net.

Demonstrator Exchange Program

The Colorado Springs turning club has asked if we have members who would be interested in a demonstrator exchange program. To save costs, their members would donate demonstrations to our club and our members would donate demonstrations to their clubs (that means, no fee). We can exchange knowledge, tap into the expert base of each other's clubs, and help out fellow woodturning clubs. If you are interested, contact Ron Bentall or Andy Zartman for more information.

West Coast Roundup

Nope, not a rodeo. The Greater Vancouver Woodturners Guild is inviting us to the West Coast Roundup, their international woodturning symposium, Sept. 10-12. For information, contact Marco Berera (604-274-7594) or see their Web site: www.gvwg.ca/Symposium2004.htm.

Free Demonstrations

Pete Holtus gives free demonstrations every Thursday, 6:30 pm to 8:30 pm, at the Woodcraft store at 4403 S. Tamarac Parkway, Denver, CO 80237. Call store at 303-290-0007 for information about the topic of demonstration.

Club Library

Note

John Montague is no longer receiving items for the library. Contact Jim Applegate for any library suggestions, returns, or donations.

Suggested Items

Contact Jim Applegate for suggestions about materials (books, videos, DVDs) to be added to our club library. The club does have a budget to purchase library materials and look to you to tell us what you want.

Of course, if you want to make donations to the library, all donations are gratefully accepted.

Featured Providers

Rocklers, Colorado Blvd, Denver, provides a 10% discount for club members – see the Rockler section on page 8. Rockler will be keeping the cash register open until the end of the

FRONT RANGE WOODTURNERS

meeting. Try to do your shopping before the end of the break, so that they can get out quickly after the end of the meeting.

Guiry's Wallpaper and Art Supplies - All six Guiry's locations are providing to members of Front Range Woodturners discounts on most everything in the store. Give the contractor account number of 7837 and name of "Front Range Woodturners" to the Guiry's cashier to get your discount.

Wood Emporium, Loveland, provides a 10% discount for FRW members.

Klingspor Catalog Orders: Those who signed up at the meetings are now on Klingspor member list. You can now order from Klingspor catalog and get a 10% discount (except for machinery). Klingspor will honor their 10% discount commitment in one of several ways. First, if you call in, let them know you're on the FRW member list, and you'll get the discount. Second, if you want to order on-line, first send an email to sales@woodworkingshop.com with your username (format is first name + last initial - i.e., John Smith would be "johns"), billing address, phone # and preferred password. User names and passwords may not exceed 10 characters. You will receive a confirmation email within 2 business days. If you do not desire to receive promotions, catalogs, or newsletters, add to this email "No Emails" and/or "No Postal Mail." Members can be removed from this email list upon request. You can contact Dave Hawley at davedorothy@comcast.net or at 1516 Lodge Court, Boulder, 80303.

Craft Supplies offers monthly deals with special discount codes that expire monthly. Discounts and codes will be announced at each FRW meeting.

Wood Events

We receive notices of events, classes, or seminars that we think you may find interesting. (Note: FRW is not endorsing these events, but only providing the information for your convenience.)

Rocky Mountain School of Woodturning

The Spring schedule for the Rocky Mountain School of Woodturning in LaPorte, CO, is beginning. They offer a range of classes through the coming few months. The classes include the following: Basic Woodturning; Intermediate Woodturning; Advanced Woodturning; Turning Green, Dry, and Natural Edged Bowls; Turning Boxes; Inlaying and Threading Lids; and Spiral Turnings. Most are 3-day courses with hands-on training. Contact Lee Carter at 970-221-4382 or via email at LLJTC4X4149@CS.COM.

Materials Suppliers

Wood Suppliers

Following is a list that Steve Claycomb has compiled of wood suppliers in the Colorado area. If you have more, contact Steve. (Note: FRW is not endorsing these suppliers, but only providing the list for your convenience.)

Rockler Woodworking and Hardware, 2553 S. Colorado Blvd., #108, Denver CO 80222, 303-782-0588, web www.rockler.com.

Consolidated Hardwoods, Inc., 11850 Vance, Broomfield, CO 80020, phone 303-466-1839, fax 303-469-3580.

Swingle Tree Co., 8585 E. Warren Ave., Denver, CO 80231, phone 303-337-6200 or 303-369-2892.

Centennial Wood Co, Inc., 985 S. Logan St., Denver, CO 80209, phone 303-778-6209.

Austin Hardwoods of Denver, Inc., 1301 S. Platte River Dr., 80223, phone 303-733-1292 or 303-722-1007, web www.austinhardwoods.com.

Colorado Tree and Shrubbery Specialists, Inc., 4760 Parfet St., Wheatridge, CO 80033, phone 303-431-4155.

Paxton Wood Source, 4837 Jackson St., Denver, CO 80213, phone 303-399-6047, web www.paxtonwood.com.

Custom Hardwoods, phone 303-280-6381, affiliated with Tech Western Warehouse, 4520 Indiana St., Golden CO 80403, contact Steve Bell phone 303-902-3115, 303-278-6882, or 303-452-9180.

Woodcraft Supply Corp., 4403 S. Tamarac Parkway, Denver, CO 80237, phone 303-290-0007.

Woodcraft Unlimited, Inc., 2301 S. Delaware St., Denver CO 80223, phone 303-778-9103.

Diverse Hardwoods, 617 1st Ave., Longmont, CO 80501, phone 303-651-1020.

TC Woods in Lafayette has local woods and walnut in stock. They also have a bandsaw mill to convert logs into lumber. Contact them at 303-666-8989.

West Penn Hardwoods has turning blanks from the Amazon. See their website at www.westpennhardwoodsamazon.com.

Tool and Steel Suppliers

Victor Machinery Exchange, Inc. 251 Centre Street New York, NY 10013 Phone: 800-723-5359 <http://www.victornet.com>

MSC Industrial Supply 6100 Stapleton Drive, South Unit A Denver, CO 80216 Local (303) 935-2022 or (800) 332-0210 Fax: (303) 937-1228 Email: branchden@mscdirect.com Web: www.mscdirect.com

DoAll Industrial Supply custom bandsaws 2955 S. Tejon St. Englewood, CO 80110 Phone: 800-92-DOALL Web: www.doall.com

Lab Metal (metal putty for "enhancing" cracks) Alvin Products 350 Merrimack St. Lawrence, MA 01843 Phone: 987-975-4580 Web: www.alvinproducts.com

FRONT RANGE WOODTURNERS

(Note: FRW is not endorsing these suppliers, but only providing the information for your convenience.)

Misc. Suppliers

Brandon Mackie has a source of filters for those of you who want to create or maintain filtration in your shop. Contact him at the next meeting or at latherunner@hotmail.com.

Sanding disks - Steve Worcester in Texas (www.turningwood.com or 972-424-7958)

Miscellaneous

Courtesy During Meetings

We have been requested to please stay seated and quiet during the meeting and demonstration as a courtesy to our demonstrators and fellow members. You feel the need for conversation during the meeting or demonstration, please feel free to step out into the Rockler store.

Also, we must make sure to return promptly after the break to make sure we don't lose time for our demonstrator.

Shop Tours

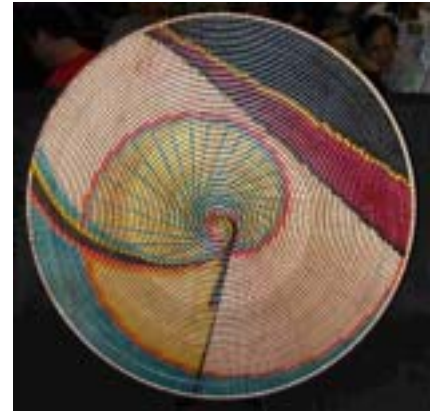
Phil Houck has the sign-up sheet for those interested in giving a tour or going on a tour. Just remember – no one expects a sparkling clean shop, so don't worry about putting it off because you don't have time to tidy up. ❖

Show and Tell

The turning challenge for August was "Platters." There was a tie – David Nittmann (did I spell it right this time, Dave?) won with his Jarrah Burl Platter and Steve DeJong won with his Colorado Juniper Platter. Beautiful work, everyone.



Phil Houck – Crabapple natural-edged bowl.



David Nittmann – Two Firebirds basket illusion platter.



Bear Limvere – Miniature "vortex" bowl and stand (1" diam.).



Gene Wentworth – Ebonized silver maple ball.



David Nittmann – Large Jarrah burl platter (approx. 28" in width).



Ron Bentall – Wormy pecan platter.



David Nittmann – Ribbon maple platter.



FRONT RANGE WOODTURNERS

DeKir – Segmented bowl with scalloped segments.



Steve DeJong – Colorado Juniper platter. Winner of August challenge.



Steve Claycomb – Segmented platter in oak and cherry.



Steve DeJong – Cedar, maple, Brazilian hardwood ornament.



Pete Holtus – Cherry and box elder ornament and stand.



Steve Claycomb – Segmented vase in oak, maple, and walnut.



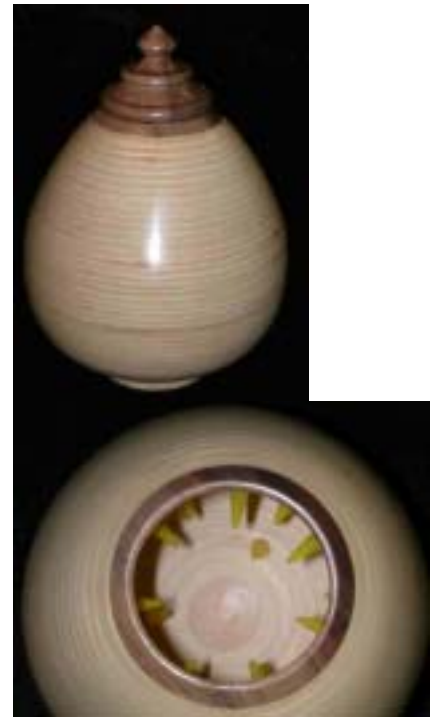
Jill Rice – Ribbon koa platter.



Bear Limvere – Myrtle bowl.



Pete Holtus – Lidded walnut box.



Paul Stafford – Birch plywood and walnut vase with teeth.

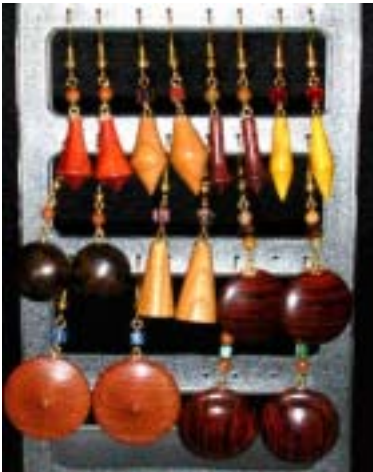
FRONT RANGE WOODTURNERS



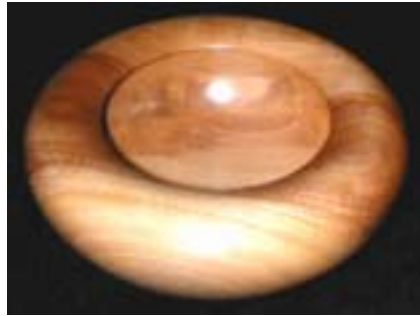
Bear Limvere – Colorado Aspen vase with brass inlay.



Phil Houck – Crabapple lidded canister and “Soren Berger” scoop.



Bear Limvere – Earrings in misc. woods.



Beautiful rolled rim bowl. Unfortunately, editor did not note maker's name.



Jill Rice – Sycamore, pink ivory, and copper platter.



Bear Limvere – Mesquite platter.



Gene Wentworth – Honey locust brush with natural bristles.



Paul Stafford – Carved and colored cedar flower box with lid-activated recording.



Martin Christensen – Aspen and walnut lidded box. Made with wood donated by Earl Ellis.



Phil Houck – Post oak natural-edged bowl. ❖

Demonstrations

Cindy Drozda demonstrated her eccentric three-sided box for our August demonstration.

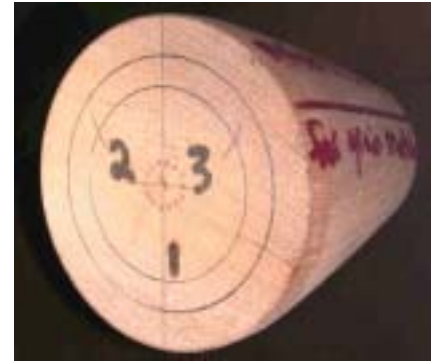
FRONT RANGE WOODTURNERS



Cindy showing how to hold one of her gouges.



Transferring the marks to the blank. Narrow end of taper.



Blank rounded and tapered using center axis. Note the mark down side later used to line up grain.



Laying out the axis points.



Wide end of taper



Blank mounted to turn taper and chuck tenon.



Laying it out relative the square blank.



Laying out the cross-section.



Blank showing chuck tenon turned to first diameter



Bottom parted off and top ready to turn inside.

FRONT RANGE WOODTURNERS



Glueing top and bottom to prepare to mount to three axes and turn. Be sure to line up grain using registration mark. She makes sure to use small drops of glue placed in the box thickness that will be turned away during the eccentric turning.



After three sides are turned. Cindy did a parting cut at the lid line and is now turning the lid finial.



Close-up of finial turning. Note the "ghost" of the eccentric corners.



Sanding finial. ❖

Rockler

Patronizing their store is the best "thank you" we can give Rockler for their generosity in letting us use their facilities for our ever-growing membership. Keep in mind that they keep the register open late on meeting nights just for us. Just be sure to complete any purchases no later than the mid-meeting break so these poor guys can start shutting down and go home.

As always – all FRW members get 10% off all items, except electrical or sale items, all the time. Just present your FRW membership card at time of purchase.

(Note: This offer is only good at the Denver retail location, and is not valid for any other location or for Internet purchases.)

If you have suggestions for tools or materials that Rockler can carry, contact Rich Johnson, manager of the Denver store. Rockler web site: www.rockler.com.

Web Stuff

The Front Range WoodTurners Web site address:

www.frontrangewoodturners.com

Get the latest information about upcoming events, meetings, and view the excellent photos of the show and tell gallery.

Other sites of interest:

(Rky Mtn Woodturners, Ft Collins)

[www.verinet.com/-](http://www.verinet.com/-drmeli/rmwt.html)

drmeli/rmwt.html

www.lathes.co.uk

www.woodworkingbasics.com

www.treelineusa.com

www.woodturnerscatalog.com

www.kestrelcreek.com

www.choicewoods.com

www.woodturner.com

www.woodturningonline.com

www.kazistudio.com ❖

Classifieds

Please note: All advertising in the Classifieds is free, but please be sure to notify the newsletter editor if an item is no longer for sale.

Ad Policy – All ads that are older than 3 months will be deleted, unless you contact the newsletter editor.

For Sale – Sears Craftsman 2 hp variable-speed lathe. 38" between centers, 20" outboard swing. Asking \$300. Lathe Copy Crafter duplicator for the above lathe. \$120. Contact Grover Brown at 303-985-2608.

For Sale – Foremost lathe, ¾ hp, 37" between centers, 12" bowl clearance. 12" and 6" toolrests. 4" and 5" faceplates. Asking \$150 for all. Contact Grover Brown at 303-985-2608.

For Sale – 14" Tri-Star bandsaw, ¾ hp. Asking \$195. Contact Grover Brown at 303-985-2608.

For Sale – Hempe #36171N Miterbox with saw; original Pro-Delta Mor-Ten Jig, router jig for mortise and tenons; both like new. Contact Les Stern at 303-744-2159.

For Sale – Maple burl and stabilized wood. Contact Brandon Mackie at 303-507-5206 or at latherunner@hotmail.com.

For Sale – Jet Lathe 1236, ¾ HP. Good shape, practically new. \$475. Contact Leroy Ullmann 303-935-5084.

For Sale – Kurt Mastercraft Woodcarver Model 20-Z. Woodcarving, duplicator machine. Will duplicate almost anything in wood, 2 at

FRONT RANGE WOODTURNERS

a time, up to 2' x 4'. Used once.
\$4,000 obo. Contact Wayne at 303-792-2735.

Wanted – Vicmarc lathe to buy. Used okay. Contact Drew Nichols at dcnichols@mindspring.com. ❖

Club Information

President: Ron Bentall
phone: 303-322-8272
e-mail: iamgray@ix.netcom.com

Vice President/Program Director/Videographer: Andy Zartman
email: AWZartman@comcast.net

Treasurer: Richard Bailey
phone: 303-252-1405

Secretary & Newsletter Editor: Alisa Limvere
phone: 303-648-3414
e-mail: limvere@fgn.net

Deadline for submitting material for inclusion in the newsletter is 15 days before the next meeting.

In addition, the following Chairpersons were appointed and accepted:

Membership & Publicity Chairman: Bear Limvere
phone: 303-648-3414
e-mail: limvere@fgn.net

Librarian: Jim Applegate
Raffle-Wood Director: Steve Claycomb

Shop Tour & Mentor Program Chairman: Phil Houck
phone: 303-985-4692

Internet Chairman: Brandon Mackie, His e-mail address is latherunner@hotmail.com.

Social Chairperson: Rose Phillips
home phone: 303-740-9663 and enter 6014 during the message work, 303-715-0172

General Meeting Information

Normal meetings are the first Tuesday of every month, unless otherwise rescheduled.

New meeting place is at Rockler Woodworking & Hardware, 2553 So. Colorado Blvd. #108 Denver, CO (west side of Colorado Blvd. opposite the mall).



Meetings are 6:30 PM - 9:30 PM.



FRONT RANGE WOODTURNERS

September, 2004, Volume 4 - Number 09

Front Range WoodTurners
P.O. Box 714
Franktown, CO 80116

FRONT RANGE WOODTURNERS

Proposal to Change Meeting Structures

Following are the three proposed meeting agendas to use from here on. Please note your preference and return this form to Ron Bentall or Alisa Limvere at the October meeting, or mail this form to P.O. Box 714, Franktown, CO 80116.

Proposal 1 – Keep Same Meeting Structure

This proposal would keep the same meeting structure that we have been using for the last couple of years. The agenda will typically include the following:

- News, Events, Group Discounts
- Wood Raffle
- Show and Tell with turning challenge
- Brief break
- Demonstration

Advantages: Each month will have all the benefits and normal meeting events and activities.

Disadvantages: Meeting pace must be kept somewhat brisk to fit everything into one evening and to maximize the time for the demonstrators.

Proposal 2 – Alternate Monthly the Demonstration and Remaining Activities

This proposal would cause the demonstrations to be held only on alternate months with the remaining meeting activities being held on the other alternate months. For example, meetings in the odd-numbered months will be only news and demonstrations and meetings in the even-numbered months will have the other activities of wood raffle, Show and Tell, etc., with no demonstration.

Advantages: More time will be available at the demonstration meetings so that the demonstrators will not feel rushed. There will be additional time available at the activity meetings for more personal time (for example, individuals can describe their show and tells, more time to visit, etc.). The club will save money because of the fewer demonstrations (although budget is not an issue).

Disadvantages: There will be fewer demonstrations per year. There will be fewer chances to bring items to Show and Tell, etc. If a member must miss a demonstration one month, he or she must wait two months for the next demonstration.

Proposal 3 – Have Two Meetings Per Month

This proposal would set an additional meeting date per month. One meeting date will be reserved for news and demonstrations only, and the second meeting date will be used for the remaining activities as described above. This proposal is dependent on the willingness of Rockler to allow us to have use of their facilities another night of the month.

Advantages: Combines the benefits of Proposal 1 and Proposal 2.

Disadvantages: Members may find it more difficult to find time to attend two meetings per month. Additional help from members will be required to support the meetings if the Board members cannot attend the two meetings. Rockler will have to allocate us the time and manpower to allow us the use of their facilities.

Your Vote

Please indicate below which proposal you prefer:

Proposal 1 _____

Other _____

Proposal 2 _____

Proposal 3 _____
