



FRONT RANGE WOODTURNERS

February, 2004, Volume 4 - Number 02

Inside this Issue

Upcoming Events	1
News	1
<i>No, You Didn't Lose a Month</i> ..	1
<i>Dues</i>	1
<i>Channel 6 Auction</i>	1
<i>Burl Wood for Sale</i>	2
<i>MicronMetal Order</i>	2
<i>Industrial Abrasives Order</i>	2
<i>Woodturning Smocks</i>	2
<i>Steve Sinner Classes</i>	2
<i>Outreach Club in Bennett Area</i>	2
.....	2
<i>New Woodturning Magazine</i> ..	2
<i>Free Demonstrations</i>	2
<i>Club Library</i>	2
<i>Featured Providers</i>	3
<i>Wood Events</i>	3
<i>Materials Suppliers</i>	3
<i>Miscellaneous</i>	4
Show and Tell	4
Demonstrations	6
Rockler	6
Web Stuff	7
Classifieds	7
Club Information	7
<i>General Meeting Information</i> ..	7

Upcoming Events

Important Note: Even though a turning challenge is announced for a meeting, this does not mean that other items can't be brought for the show & tell. Feel free to bring in what you've created and don't feel you have to be a master turner to show off your work.

February – February 3. Allen Jensen will be doing the February demonstration, demonstrating the how to use the McNaughton bowl saver system to create nested

salad bowls. Turning challenge: Kitchen items.

March – March 2. Steve Sinner will be our demonstrator. His internationally known specialty is deep hollow forms. Turning challenge: Embellished turnings (carving, burning, any post-turning decoration or change).

April – April 6. Turning challenge: Egg or sphere. ♦

News

No, You Didn't Lose a Month

It was suggested that the publish month indicated for each newsletter be changed to show the next month, instead of the previous month. This change will help reduce confusion about when announced events will occur. So, since this is leap year, we leaped a month in our newsletter sequence.

Dues

It's that time of the year! As a reminder to members and guests of Front Range Woodturners, the annual dues are now due. Dues are the following:

- Individual – \$35
- Couple – \$40 (best bargain)
- Student – \$17
- Under 12 in age – Free

Please contact Richard Bailey at the next meeting or mail a check for your dues to the following address:

Front Range WoodTurners
P.O. Box 714
Franktown, CO 80116

Please include the following:

Name _____
 Street _____
 City _____
 State _____ Zip _____
 Home _____
 Telephone _____
 Work _____
 Telephone _____
 Email _____
 Web site _____

By default, if you provide an email address, you will receive your newsletters via email. If you do not want this, please indicate it when you send in your dues and the newsletters will be mailed via USPS.

Important - If your dues are not paid by mid-February, you will no longer receive our newsletter (unless you are a recent guest who is still in the 2-month trial period).

Bear Limvere will be sending out the member roster with the March newsletter, so if you want to receive a roster or be in it, please be sure to pay your dues by mid-February.

Channel 6 Auction

Gene Wentworth is still gathering donated items for the Channel 6 Auction. We require a minimum of 8 items, each worth at least \$75, totaling over \$1,000 in value to get

FRONT RANGE WOODTURNERS

our own table. The February meeting is the final due date when Gene can accept items. If you bring an item to donate, be sure to get a form from him to fill out with information about the item.

In addition to the satisfaction of knowing they help a good cause, donors are invited to a "preview" wine and cheese party put on by Channel 6.

Burl Wood for Sale

Jerry Patrasso has a lot of fine burl wood for sale. His number is 303-527-5000.

MicronMetal Order

Brandon Mackie is building another volume MicronMetal order. You probably have seen samples in the show and tell items of inlaid metal highlighting "accent" cracks and crevices in turned pieces. Price is \$9-\$11/lb, depending on metal type. Please bring check or cash to the February meeting for your order.

Industrial Abrasives Order

Dave Hawley is building another volume order for Industrial Abrasives. We all know how expensive good sandpaper is, so buying in bulk is good sense. Contact Dave Hawley at the February meeting for more information.

Woodturning Smocks

The woodturning smocks that were ordered by members at the November meeting have been completed and will be available at the January meeting. The cost is \$33.00 each with checks made payable to "FRONTRANGE WOODTURNERS".

Jerry Smith is building another smock order, but the price has gone up slightly to \$35. Available sizes are M, L, XL, XXL, and XXXL. Contact him at the February meeting.

Steve Sinner Classes

There are still a couple openings in classes that Steve Sinner will be giving on Sunday, March 7. Cost is \$600 total, split among all attendees. If enough people sign-up, he may give additional classes. Classes will be held at David Nittmann's shop in Boulder. If you are interested, call David at 303-449-7170. Steve Sinner is an internationally known turner specializing in deep hollow forms (see below). Check out his web site at <http://www.creative-woodturning.com/showcasesinn.htm>.



Outreach Club in Bennett Area

Steve DeJong is forming an outreach club for woodturners in the Bennett area. Everyone is welcome. These are informal meetings held every 4th Saturday of the month at his shop at 835 Antelope Drive, W., Bennett. If you

are interested, call Steve at 303-829-0246. If you would like to volunteer to do a demo (perhaps practice up before going in front of "paying" audiences), call Steve.

New Woodturning Magazine

A new woodturning magazine will be hitting the stands. *Woodturning Design* is available for new subscribers for \$19.97 for 4 issues/year or \$39.97 for 9 issues/2 years. If you subscribe before 2/24, you are eligible for a drawing on March 1. If you are interested, contact B. Cohen, All American Crafts, 243 Newton-Sparta Rd., Newton, NJ 07860 or check out their website at www.woodturningdesign.com.

Free Demonstrations

Pete Holtus gives free demonstrations every Thursday, 6:30 pm to 8:30 pm, at the Woodcraft store at 4403 S. Tamarac Parkway, Denver, CO 80237. Call store at 303-290-0007 for information about the topic of demonstration.

Club Library

Suggested Items

Contact Jim Applegate or John Montague for suggestions about materials (books, videos, DVDs) to be added to our club library. The club does have a budget to purchase library materials and look to you to tell us what you want.

Of course, if you want to make donations to the library, all donations are gratefully accepted.

Overdue Items

Standard checkout rules are that you can check out no more than 2

FRONT RANGE WOODTURNERS

items at once and that the items are due at the next meeting. If you do not return items on time, you may have your library privileges revoked. If you cannot attend the meeting, contact Jim Applegate or drop-off the items at the Colorado Blvd. Rockler store.

Many items from the library are over due or missing. We are preparing a list of the outstanding items, and do not want place limitations of the usage or initiate new policies to correct the misuse of our library. This is one of the great assets of our organization and we need to make sure each member has the full opportunity to enjoy this benefit.

Featured Providers

Rocklers, Colorado Blvd, Denver, provides a 10% discount for club members – see the Rockler section on page 6. Rockler will be keeping the cash register open until the end of the meeting. Try to do your shopping before the end of the break, so that they can get out quickly after the end of the meeting.

Guiry's Wallpaper and Art Supplies - All six Guiry's locations are providing to members of Front Range Woodturners discounts on most everything in the store. Give the contractor account number of 7837 and name of "Front Range Woodturners" to the Guiry's cashier to get your discount.

Wood Emporium, Loveland, provides a 10% discount for FRW members.

Klingspor Catalog Orders: Those who signed up at the meetings are now on Klingspor member list. You can now order from Klingspor catalog and get a 10% discount (except for machinery). Members can be removed from this email list upon request. You can contact

Dave Hawley at davedorothy@comcast.net or at 1516 Lodge Court, Boulder, 80303.

Wood Events

We receive notices of events, classes, or seminars that we think you may find interesting. (Note: FRW is not endorsing these events, but only providing the information for your convenience.)

Rocky Mountain School of Woodturning

The Spring schedule for the Rocky Mountain School of Woodturning in LaPorte, CO, is beginning. They offer a range of classes through the coming few months. The classes include the following: Basic Woodturning; Intermediate Woodturning; Advanced Woodturning; Turning Green, Dry, and Natural Edged Bowls; Turning Boxes; Inlaying and Threading Lids; and Spiral Turnings. Stephen Hughes of Australia will be giving special 2- and 3-day seminars. It is suggested that you register early.

Most are 3-day courses with hands-on training. Contact Lee Carter at 970-221-4382 or via email at LLJTC4X4149@CS.COM.

Materials Suppliers

Wood Suppliers

Following is a list that Steve Claycomb has compiled of wood suppliers in the Colorado area. If you have more, contact Steve. (Note: FRW is not endorsing these suppliers, but only providing the list for your convenience.)

Rockler Woodworking and Hardware, 2553 S. Colorado Blvd., #108, Denver CO 80222, 303-782-0588, web www.rockler.com.

Consolidated Hardwoods, Inc., 11850 Vance, Broomfield, CO 80020, phone 303-466-1839, fax 303-469-3580.

Swingle Tree Co., 8585 E. Warren Ave., Denver, CO 80231, phone 303-337-6200 or 303-369-2892.

Centennial Wood Co, Inc., 985 S. Logan St., Denver, CO 80209, phone 303-778-6209.

Austin Hardwoods of Denver, Inc., 1301 S. Platte River Dr., 80223, phone 303-733-1292 or 303-722-1007, web www.austinhardwoods.com.

Colorado Tree and Shrubbery Specialists, Inc., 4760 Parfet St., Wheatridge, CO 80033, phone 303-431-4155.

Paxton Wood Source, 4837 Jackson St., Denver, CO 80213, phone 303-399-6047, web www.paxtonwood.com.

Custom Hardwoods, phone 303-280-6381, affiliated with Tech Western Warehouse, 4520 Indiana St., Golden CO 80403, contact Steve Bell phone 303-902-3115, 303-278-6882, or 303-452-9180.

Woodcraft Supply Corp., 4403 S. Tamarac Parkway, Denver, CO 80237, phone 303-290-0007.

Woodcraft Unlimited, Inc., 2301 S. Delaware St., Denver CO 80223, phone 303-778-9103.

Diverse Hardwoods, 617 1st Ave., Longmont, CO 80501, phone 303-651-1020.

Tool and Steel Suppliers

Victor Machinery Exchange, Inc. 251 Centre Street
New York, NY 10013
Phone: 800-723-5359
<http://www.victornet.com>

MSC Industrial Supply
1551 West Evans
Denver, CO 80223
Local (303) 935-2022
or (800) 332-0210
Fax: (303) 937-1228
Email: branchden@mscdirect.com
Web: www.mscdirect.com

(Note: FRW is not endorsing these suppliers, but only providing the information for your convenience.)

FRONT RANGE WOODTURNERS

Misc. Suppliers

Brandon Mackie has a source of filters for those of you who want to create or maintain filtration in your shop. Contact him at the next meeting or at latherunner@hotmail.com.

Sanding disks - Steve Worcester in Texas (www.turningwood.com or 972-424-7958)

Miscellaneous

Courtesy During Meetings

We have been requested to please stay seated and quiet during the meeting and demonstration as a courtesy to our demonstrators and fellow members. You feel the need for conversation during the meeting or demonstration, please feel free to step out into the Rockler store.

Also, we must make sure to return promptly after the break to make sure we don't lose time for our demonstrator.

Shop Tours

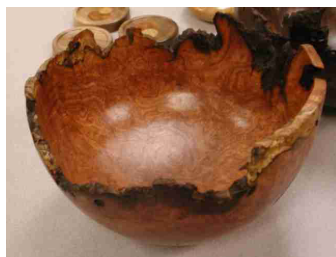
We are trying to set up shop tours for interested members. Phil Houck has the sign-up sheet for those interested in giving a tour or going on a tour. Just remember – no one expects a sparkling clean shop, so don't worry about putting it off because you don't have time to tidy up. ❖

Show and Tell

The turning challenge was "spindle turning" and Wow! did people bring in some gorgeous examples. Competition was stiff, but Phil Houck won with his three captured ring goblets. People brought the following items for the Show and Tell.



Phil Houck – Goblets with captured rings and small "horns" on stems.



Pete Holtus – Mesquite natural-edged bowl.



Brandon Mackie – Bocote goblet.



Pete Holtus – Claro walnut natural-edged bowl. Stunning grain!



Martin Christensen – Walnut coasters with offset inlays of cocobolo and boxwood.



John Montague – Beautiful walnut cane with brass handle.



Jerry Smith – Segmented bowl of walnut, cherry, maple, red oak, bloodwood, and birds-eye maple.

FRONT RANGE WOODTURNERS



Jerry Smith – Segmented vase of butternut and walnut.



Bill Hopper – Hand-made ash-handled turning tools.



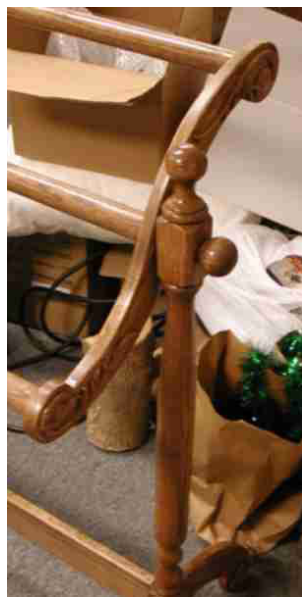
Robin Luther – Cherry open-spiral lamp.



Pete Holtus – Natural-edged goblet (for those who are serious about cutting back on drinking!).



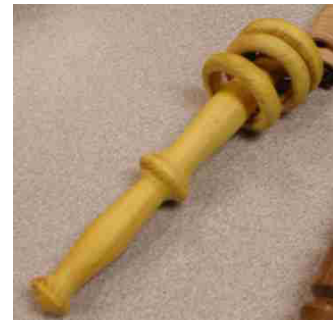
Terence Rice – Walnut crotch, natural-edged bowl with turquoise inlay.



Bill Hopper – Oak quilt stand with hand-carved details.



Martin Christensen – Canarywood and glass candle holder.



Terence Rice – Osage orange baby rattle.



Steve DeJong – Sycamore micro-ringing turning (52 rings, total length less than 5").

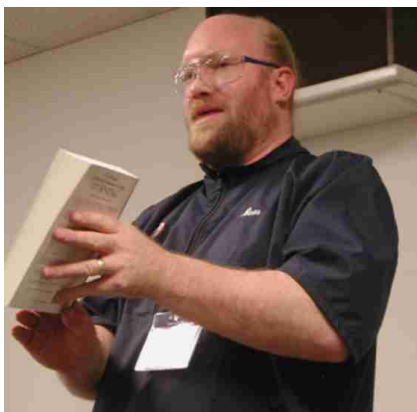
In addition, the following people bring items:

- Lars Nyland – White oak bowl. ❖

FRONT RANGE WOODTURNERS

Demonstrations

Bear Limvere was our January demonstrator. He demonstrated Ornamental Turning (OT). OT is the method of mechanically applying decoration to already turned items.



Bear discussing available OT literature.



Samples of OT.



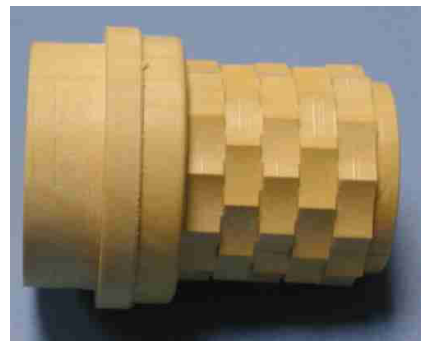
OT using the Nova Ornamental Turner unit.



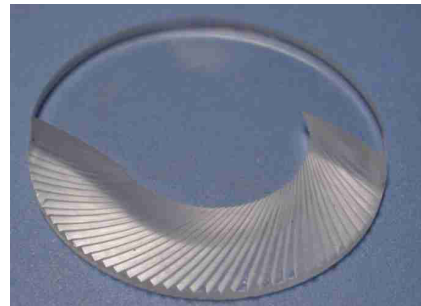
Close-up of face cutting creating barley-corn effect.



Bear's homemade unit costing less than \$100. Plans are available for the nominal cost of \$3 (to cover copying expenses). If you want the plans, contact Bear at the February meeting.



Demo item showing side cutting creating basketwork in boxwood.



Demo item showing face cutting in Lexan plexiglass.❖

Rockler

Just a reminder – all FRW members get 10% off all items, except electrical or sale items, all the time. Just present your FRW membership card at time of purchase.

(Note: This offer is only good at the Denver retail location, and is not valid for any other location or for Internet purchases.)

If you have suggestions for tools or materials that Rockler can carry, contact Rich Johnson, manager of the Denver store. Rockler web site: www.rockler.com.❖



FRONT RANGE WOODTURNERS

February, 2004, Volume 4 - Number 02

Front Range WoodTurners
P.O. Box 714
Franktown, CO 80116